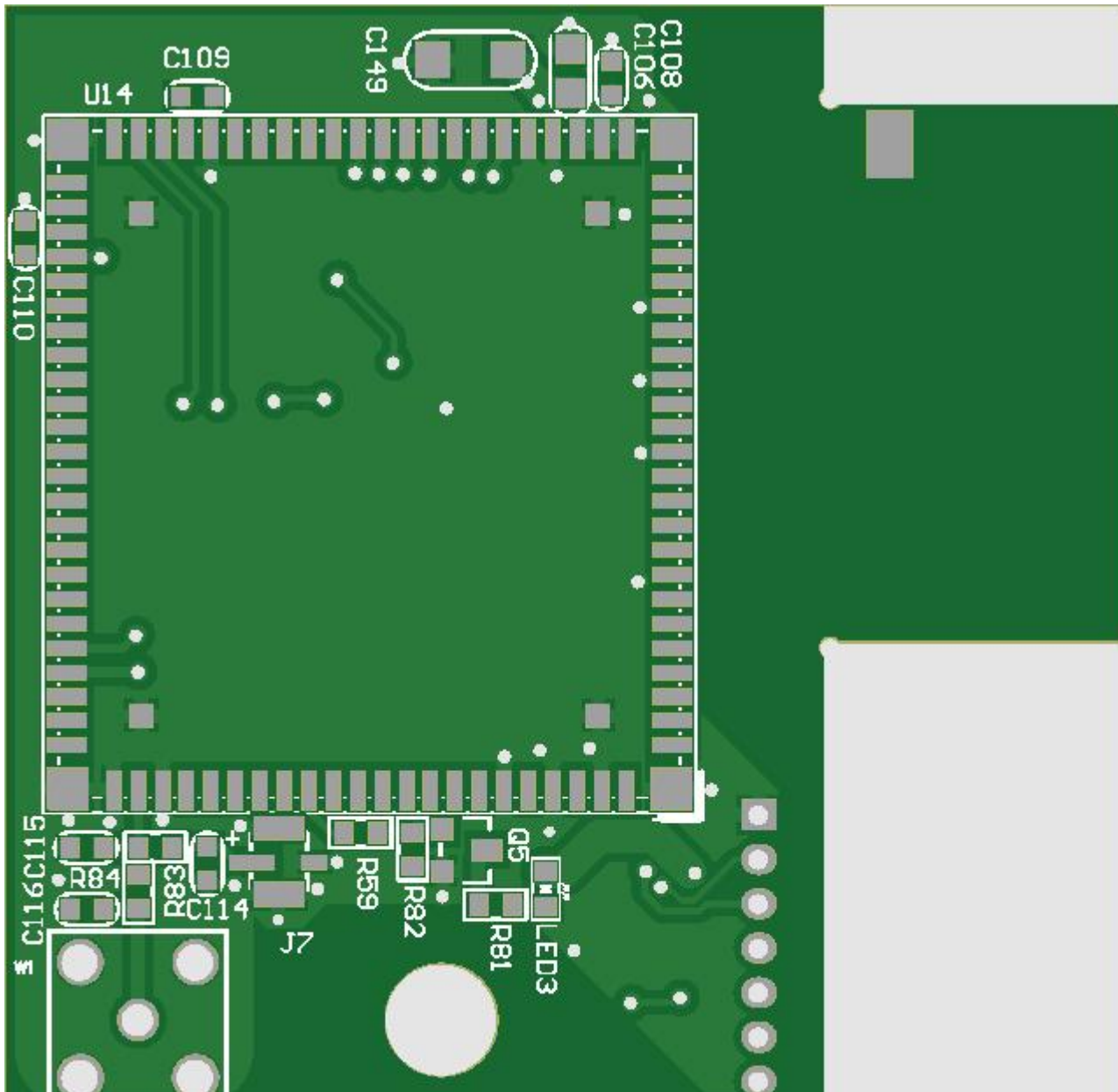


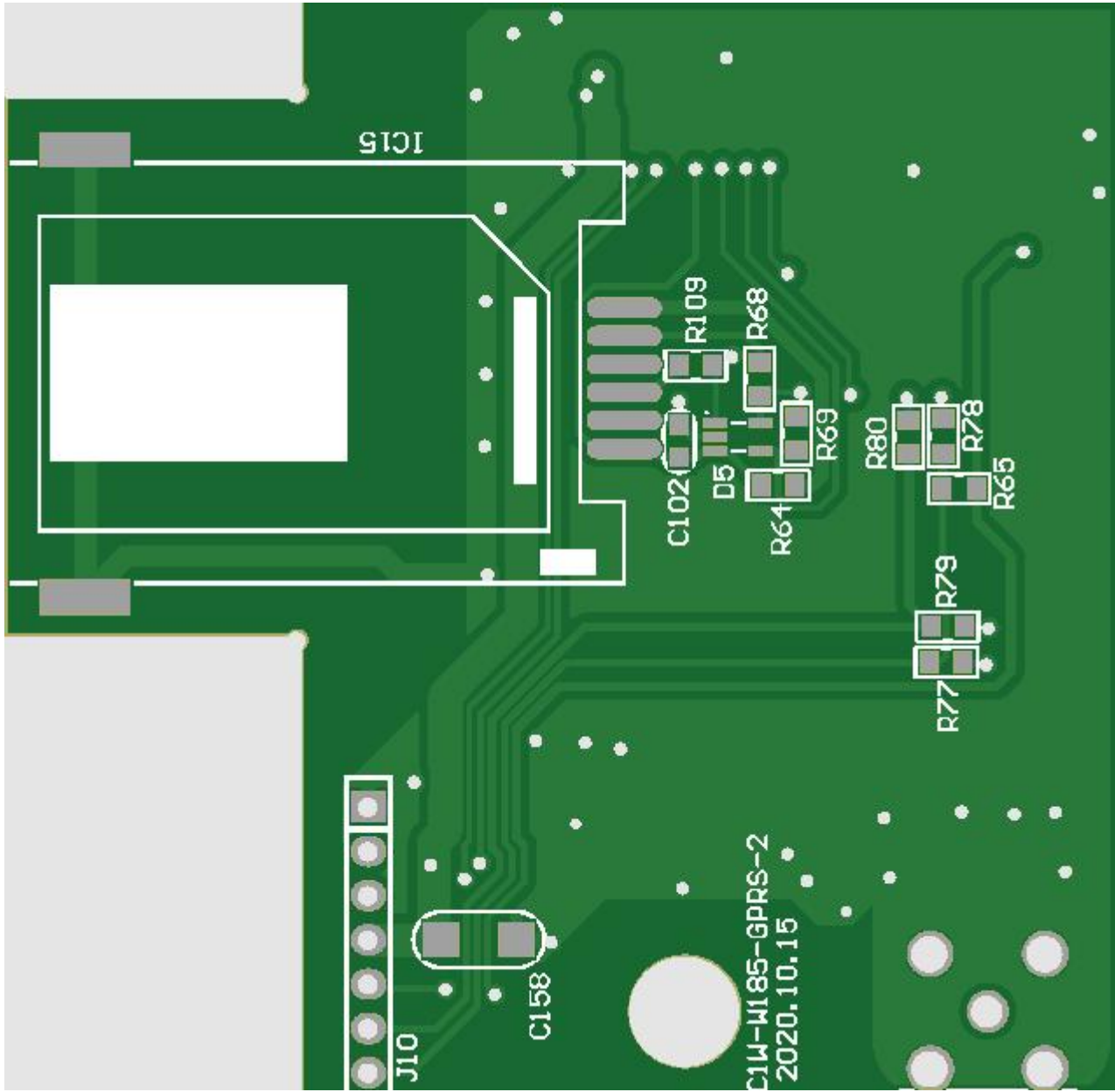
PCB SIZE : 50.4\*49.5\*1.5mm

LAYER : 2 layers

THROUGH HOLE: Metalization

VERSION: C1W-W185-GPRS-2





# Shipping inspection report

Client.	Customer Model: C1W-W185-GPRS-2	Number: 1010504763
Order number: /	Shipment Quantity: /	Appearance sampling standard: AQL=0.65 Number of sampling: 20 PCS
Production cycle: /	Inspection date: 2022.4.2	Inspector: Yang Ruping

Inspection items	Requirement	Tolerance	Test Results	Determination	Remark
Line Graphics	Efilm negatives	N/A	Matching	ACC	
Green oil/text	Efilm negatives	N/A	Matching	ACC	
Plate	FR-4 1.6mm	±0.13	1.61mm	ACC	
Hole wall copper thickness	>18um	/	20.1um	ACC	
Nickel/Gold Thickness	/	Min	/	/	
Surface treatment	Tin spray	/	Tin spray	ACC	
V-Cut Yu Hou	0.53mm	±0.1	0.45mm	ACC	
Electrical Testing	100%TEST	N/A	PASS	ACC	
Appearance Inspection	Qualified	/	Qualified	ACC	
Curvature	<1.0%	/	0.77%	ACC	
UL marking	/	/	/	/	

Test items	Requirement	Test Results	Determination	Remark
Solderability	>95% on tin	Good upper tin	ACC	
Green oil adhesion	3M adhesive paper test, no green oil off	No Peel Off	ACC	
Thermal shock	Paper board: 260° C ×10S	No Graze	ACC	
	Fiber material: 288° C×10S			

Aperture measurement (mm)											
Code Name	Requirements	Tolerance	PTH or	Actual test	Determination	Code Name	Requirements	Tolerance	PTH or	Real test	Determination
			NP TH						NP TH		
	0.750	±0.075	PTH	0.775	ACC		3.200	±0.05	NPTH	3.200	ACC
	0.800	±0.075	PTH	0.85	ACC						

	0.900	±0.075	PTH	0.925	ACC						
	1.000	±0.075	PTH	1.025	ACC						
	1.100	±0.075	PTH	1.125	ACC						
	1.300	±0.075	PTH	1.35	ACC						
	2.000	±0.05	NPT H	2.000	ACC						

Cod e Nam e	Requirement	Difference	Actual measurement	Determination
	200.00	±0.2	199.97	ACC
	119.73	±0.2	119.72	ACC

Final judgment:  qualified (Accept)  unqualified (Reject)