



**NINGBO EZ IRRIGATION TECHNOLOGY CO., LTD.**

Add: No. 11-1 Yongxing Road, Tongguang Industrial Zone, Fengshan Street, Yuyao City, Zhejiang Province  
Tel: 0574-62589598 62589599      Mobile phone: 18058522656      Fax: 0574-62589599  
P.C.: 315404      E-mail: [sonic@ezgation.com](mailto:sonic@ezgation.com)      Http: [//www.ezgation.com](http://www.ezgation.com)

**NINGBO EZ IRRIGATION TECHNOLOGY CO., LTD.**  
*Performance, Quality, Durability*



# About Us



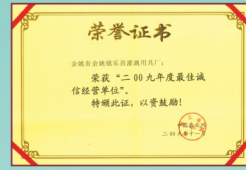
EZ Irrigation Technology is a professional manufacturer of irrigation products. We have more than 20 years of experience in the development and production of irrigation equipment.

Since we succeeded in producing our first micro sprinkler in 2000, we keep to give full play to professional advantages, continuously update technology and develop new products. Up to now, our products have serviced thousands of customers in China and all over the world.

We stick to the concept of "Performance, Quality, Durability". With excellent designs, advanced manufacturing facilities, high-standard materials, standardized processes, and strict quality control, we focus on developing and producing high-end irrigation equipment. Our products have passed the test and spot checking by Testing Center of Saving Water Irrigation Equipments, MWR, and achieved an outstanding A-level standard.

We have an excellent research and development team, which is capable of independent research and development. We can also provide you with OEM, ODM and OBM and other cooperation modes. Besides, we have a caring after-sales team, and a mature after-sales service system. We provide our customers with comprehensive technical support as well as efficient after-sales service.

We are willing to conduct extensive exchanges and cooperation with our overseas colleagues, and warmly welcome you to visit us.



# Contents

> Micro Sprinklers 01

> Medium-range Sprinklers 10

> Drip Irrigation 16

> Accessories 17

> Suit Combinations 23



Micro Sprinklers

Micro Sprinklers

Medium-range Sprinklers

Medium-range Sprinklers

Drip Irrigation

Drip Irrigation

Accessories

Accessories

Suit Combination

Suit Combination



**Inverted Spinner**

• Inverted position, widely used in greenhouse irrigation for water and fertilizer efficiency.

**Inverted rotating nozzle**

NO.	Nozzle color/ Diameter	0.15		0.2		0.25		0.3	
		Flow (L/H)	Radius (m)	Flow (L/H)	Radius (m)	Flow (L/H)	Radius (m)	Flow (L/H)	Radius (m)
1101A	0.8mm	22.8	3.0	26.7	3.3	30.6	3.5	33.9	3.6
1102A	1.0mm	36.7	3.2	43.9	3.5	50	3.7	55.6	4.0
1103A	1.2mm	53.9	3.7	64.4	4.0	73.9	4.2	81.7	4.4
1104A	1.4mm	72.2	3.9	86.1	4.3	98.3	4.5	109.7	4.7
1105A	1.6mm	96.7	4.0	115	4.3	130.8	4.5	145.8	4.8
1106A	1.8mm	120	4.0	143.3	4.3	162.5	4.5	179.2	4.8
1107A	2.0mm	144.2	4.0	170.8	4.3	193.3	4.5	216.7	4.8

Note: Tested in breezeless outdoors, inverted position, 1.8m above the ground. We suggest that water pressure should above 0.2Mpa for better spray evenness.

INLET	6mm Female conic
QTY	2500pcs/ctn
G.W.	12kg
MEAS	42*34*30cm



**Circular Swivel Spinner**

• Inverted or upright position.

NO.	Nozzle color/ Diameter	0.15		0.2		0.25		0.3	
		Flow (L/H)	Radius (m)	Flow (L/H)	Radius (m)	Flow (L/H)	Radius (m)	Flow (L/H)	Radius (m)
1701	0.8mm	22.6	2.5	27.2	2.5	31.3	2.6	33.9	2.7
1702	1.0mm	37.8	2.5	45	2.6	51.1	2.7	55.6	2.7
1703	1.2mm	53.9	2.5	64.4	2.7	73.3	2.7	79.4	2.8
1704	1.4mm	72.8	2.5	86.1	2.7	97.8	2.8	107.2	3.0
1705	1.6mm	90	2.5	105.6	2.8	116.1	3.0	125	3.2
1706	1.8mm	115.8	2.5	136.7	3.0	150	3.2	162.5	3.5
1707	2.0mm	147.9	2.5	175	3.0	197.5	3.2	221.7	3.5

Note: Tested in breezeless outdoors, 1.8m above the ground inverted or 0.4m above the ground upright. We suggest that water pressure should above 0.2Mpa for better spray evenness.

INLET	6mm Female conic
QTY	5000pcs/ctn
G.W.	15.5kg
MEAS	42*34*30cm



**Upright Spinner**

• Upright position, widely used in various irrigation systems for water and fertilizer efficiency.

NO.	Nozzle color/ Diameter	0.15		0.2		0.25		0.3	
		Flow (L/H)	Radius (m)	Flow (L/H)	Radius (m)	Flow (L/H)	Radius (m)	Flow (L/H)	Radius (m)
1101B	0.8mm	22.8	2.4	26.7	2.5	30.6	2.6	33.9	2.8
1102B	1.0mm	36.7	2.8	43.9	3.0	50	3.1	55.6	3.2
1103B	1.2mm	53.9	2.8	64.4	3.0	73.9	3.2	81.7	3.4
1104B	1.4mm	72.2	3.0	86.1	3.2	98.3	3.4	109.7	3.5
1105B	1.6mm	96.7	3.2	115	3.4	130.8	3.7	145.8	3.8
1106B	1.8mm	120	3.5	143.3	3.6	162.5	4.0	179.2	4.2
1107B	2.0mm	144.2	3.5	170.8	3.6	193.3	4.0	216.7	4.2

Note: Tested in breezeless outdoors, upright position, 0.4m above the ground. We suggest that water pressure should above 0.2Mpa for better spray evenness.

INLET	6mm Female conic
QTY	2500pcs/ctn
G.W.	12kg
MEAS	42*34*30cm



**Triangle Swivel Spinner**

• Inverted position

NO.	Nozzle color/ Diameter	0.15		0.2		0.25		0.3	
		Flow (L/H)	Radius (m)	Flow (L/H)	Radius (m)	Flow (L/H)	Radius (m)	Flow (L/H)	Radius (m)
1711	0.8mm	22.6	3.5	27.2	3.6	31.3	3.7	33.9	3.9
1712	1.0mm	37.8	3.5	45	3.7	51.1	4.0	55.6	4.0
1713	1.2mm	53.9	3.7	64.4	4.0	73.3	4.0	79.4	4.2
1714	1.4mm	72.8	3.7	86.1	4.0	97.8	4.1	107.2	4.3
1715	1.6mm	90	3.7	105.6	4.0	116.1	4.2	125	4.4
1716	1.8mm	115.8	3.7	136.7	4.0	150	4.2	162.5	4.4
1717	2.0mm	147.9	3.7	175	4.0	197.5	4.3	221.7	4.5

Note: Tested in breezeless outdoors, 1.8m above the ground inverted. We suggest that water pressure should above 0.2Mpa for better spray evenness.

INLET	6mm Female conic
QTY	5000pcs/ctn
G.W.	14.2kg
MEAS	40*32*28cm



**Deflecting Mist Sprayer**

• Inverted or upright position.

NO.	Nozzle color/ Diameter	0.15		0.2		0.25		0.3	
		Flow (L/H)	Radius (m)	Flow (L/H)	Radius (m)	Flow (L/H)	Radius (m)	Flow (L/H)	Radius (m)
1201	0.8mm	22.8	Inverted Position 1-1-1.3	26.7	Upright Position 1-1-1.3	30.6	Inverted Position 1-2-1.4	33.9	Upright Position 1-1-1.3
1202	1.0mm	36.7		43.9		50		55.6	
1203	1.2mm	53.9	Inverted Position 1-2-1.4	64.4	Upright Position 1-1-1.3	73.9	Inverted Position 1-2-1.4	81.7	Upright Position 1-2-1.4
1204	1.4mm	72.2		86.1		98.3		109.7	
1205	1.6mm	96.7	Inverted Position 1-1-1.3	115	Upright Position 1-2-1.4	130.8	Inverted Position 1-2-1.4	145.8	Upright Position 1-2-1.4
1206	1.8mm	120		143.3		162.5		179.2	
1207	2.0mm	144.2	Inverted Position 1-1-1.3	170.8	Upright Position 1-2-1.4	193.3	Inverted Position 1-2-1.4	216.7	Upright Position 1-1-1.3

Note: Tested in breezeless outdoors, 1.8m above the ground inverted or 0.4m above the ground upright. We suggest that water pressure should above 0.2Mpa for better spray evenness.

INLET	6mm Female conic
QTY	3000pcs/ctn
G.W.	12.5kg
MEAS	42*34*30cm



**G Type Side Swivel Spinner**

• Upright position

NO.	Nozzle color/ Diameter	0.15		0.2		0.25		0.3	
		Flow (L/H)	Radius (m)	Flow (L/H)	Radius (m)	Flow (L/H)	Radius (m)	Flow (L/H)	Radius (m)
1721	0.8mm	22.6	2.7	27.2	2.9	31.3	3.0	33.9	3.3
1722	1.0mm	37.8	2.8	45	3.0	51.1	3.2	55.6	3.4
1723	1.2mm	53.9	3.0	64.4	3.2	73.3	3.3	79.4	3.4
1724	1.4mm	72.8	3.3	86.1	3.5	97.8	3.6	107.2	3.7
1725	1.6mm	90	3.3	105.6	3.5	116.1	3.6	125	3.7
1726	1.8mm	115.8	3.3	136.7	3.5	150	3.7	162.5	3.7
1727	2.0mm	147.9	3.3	175	3.5	197.5	3.7	221.7	3.7

Note: Tested in breezeless outdoors, 0.4m above the ground upright. We suggest that water pressure should above 0.2Mpa for better spray evenness.

INLET	6mm Female conic
QTY	5000pcs/ctn
G.W.	14.2kg
MEAS	40*32*28cm



### G Type 180° Deflecting Sprayer

• G-type frame with wedge-shaped section can minimize blind zones.

Water Pressure (Mpa)		0.15		0.2		0.25		0.3	
NO.	Nozzle color/ Diameter	Flow (L/H)	Radius (m)	Flow (L/H)	Radius (m)	Flow (L/H)	Radius (m)	Flow (L/H)	Radius (m)
1731	0.8mm	22.6	1.8	27.2	1.9	31.3	2.0	33.9	2.1
1732	1.0mm	37.8	1.8	45	2.0	51.1	2.0	55.6	2.2
1733	1.2mm	53.9	1.8	64.4	2.0	73.3	2.2	79.4	2.2
1734	1.4mm	72.8	1.9	86.1	2.0	97.8	2.2	107.2	2.3
1735	1.6mm	90	2.1	105.6	2.2	116.1	2.3	125	2.5
1736	1.8mm	115.8	2.2	136.7	2.4	150	2.4	162.5	2.6
1737	2.0mm	147.9	2.2	175	2.4	197.5	2.5	221.7	2.6

Note: Tested in breezeless outdoors, 0.4m above the ground upright. We suggest that water pressure should above 0.2Mpa for better spray evenness.

INLET	6mm Female conic
QTY	5000pcs/ctn
G.W.	13.5kg
MEAS	42*34*30cm



### G Type Deflecting Mist Sprayer

• Inverted or upright position.

Water Pressure (Mpa)		0.15		0.2		0.25		0.3	
NO.	Nozzle color/ Diameter	Flow (L/H)	Radius (m)	Flow (L/H)	Radius (m)	Flow (L/H)	Radius (m)	Flow (L/H)	Radius (m)
1741	0.8mm	22.6	1.0	27.2	1.0	31.3	1.1	33.9	1.1
1742	1.0mm	37.8	1.1	45	1.1	51.1	1.2	55.6	1.2
1743	1.2mm	53.9	1.2	64.4	1.2	73.3	1.3	79.4	1.3
1744	1.4mm	72.8	1.3	86.1	1.3	97.8	1.4	107.2	1.4
1745	1.6mm	90	1.3	105.6	1.3	116.1	1.4	125	1.4
1746	1.8mm	115.8	1.4	136.7	1.4	150	1.5	162.5	1.5
1747	2.0mm	147.9	1.5	175	1.5	197.5	1.6	221.7	1.6

Note: Tested in breezeless outdoors, 1.8m above the ground inverted or 0.4m above the ground upright. We suggest that water pressure should above 0.2Mpa for better spray evenness.

INLET	6mm Female conic
QTY	6000pcs/ctn
G.W.	15.8kg
MEAS	43*35*33cm



### G Type 360° Deflecting Sprayer

• Inverted or upright position.

Water Pressure (Mpa)		0.15		0.2		0.25		0.3	
NO.	Nozzle color/ Diameter	Flow (L/H)	Radius (m)	Flow (L/H)	Radius (m)	Flow (L/H)	Radius (m)	Flow (L/H)	Radius (m)
1751	0.8mm	22.6	1.8	27.2	1.9	31.3	2.0	33.9	2.1
1752	1.0mm	37.8	1.8	45	2.0	51.1	2.0	55.6	2.2
1753	1.2mm	53.9	1.8	64.4	2.0	73.3	2.2	79.4	2.2
1754	1.4mm	72.8	1.9	86.1	2.0	97.8	2.2	107.2	2.3
1755	1.6mm	90	2.1	105.6	2.2	116.1	2.3	125	2.5
1756	1.8mm	115.8	2.2	136.7	2.4	150	2.4	162.5	2.6
1757	2.0mm	147.9	2.2	175	2.4	197.5	2.5	221.7	2.6

Note: Tested in the breezeless outdoors, 0.4m above the ground. We suggest that water pressure should above 0.2Mpa for better spray evenness.

INLET	6mm Female conic
QTY	5000pcs/ctn
G.W.	13.5kg
MEAS	42*34*30cm



### Frameless Spinner

• No blind zone due to the frameless styling

Water Pressure (Mpa)		0.15		0.2		0.25		0.3	
NO.	Nozzle color/ Diameter	Flow (L/H)	Radius (m)	Flow (L/H)	Radius (m)	Flow (L/H)	Radius (m)	Flow (L/H)	Radius (m)
1811	0.8mm	20.7	3.1	24.1	3.5	27.4	3.5	29.8	3.6
1812	1.0mm	33.4	3.2	39.7	3.5	44.8	3.5	48.9	3.7
1813	1.2mm	53.6	3.2	63.2	3.5	71.7	3.7	79.4	3.8
1814	1.4mm	69.7	3.5	81.3	3.8	91.0	4.0	103.6	4.3
1815	1.6mm	81.8	3.5	96.3	4.0	108.3	4.2	117.6	4.5
1816	1.8mm	94.1	3.5	111.4	4.0	125.8	4.3	139.6	4.5
1817	2.0mm	99.8	3.6	126.8	3.8	143.4	4.0	158.9	4.5

Note: Tested in the breezeless outdoors, 1.8m above the ground. We suggest that water pressure should above 0.2Mpa for better spray evenness.

INLET	6mm Female conic
QTY	2000pcs/ctn
G.W.	18.8kg
MEAS	43*35*33cm



### 4 Way Fogger

• Excellent atomizing effect, minimum blind zones.

Water Pressure (Mpa)		0.25		0.3		0.35		0.4	
NO.	Nozzle color	Flow (L/H)	Radius (m)	Flow (L/H)	Radius (m)	Flow (L/H)	Radius (m)	Flow (L/H)	Radius (m)
1301		31.9	0.9-1.0	35.0	0.9-1.0	37.8	0.9-1.0	40.3	0.9-1.0
1302		24.4	0.9-1.0	26.7	0.9-1.0	28.6	0.9-1.0	30.6	0.9-1.0
1303		56.7	0.9-1.0	62.2	0.9-1.0	66.7	0.9-1.0	71.0	0.9-1.0
1304		70.6	0.9-1.0	77.8	0.9-1.0	83.3	0.9-1.0	88.9	0.9-1.0

Water Pressure (Mpa)		0.25		0.3		0.35		0.4	
NO.	Nozzle color	Flow (L/H)	Radius (m)	Flow (L/H)	Radius (m)	Flow (L/H)	Radius (m)	Flow (L/H)	Radius (m)
1301B		22.8	0.9-1.0	25.1	0.9-1.0	26.9	0.9-1.0	29.4	0.9-1.0

Note: Radius was measured at the same horizontal plane with the nozzle.

INLET	6mm Female conic
QTY	2000pcs/ctn
G.W.	16.3kg
MEAS	43*35*33cm



### 1 Way Fogger

• Excellent atomizing effect, minimum blind zones.

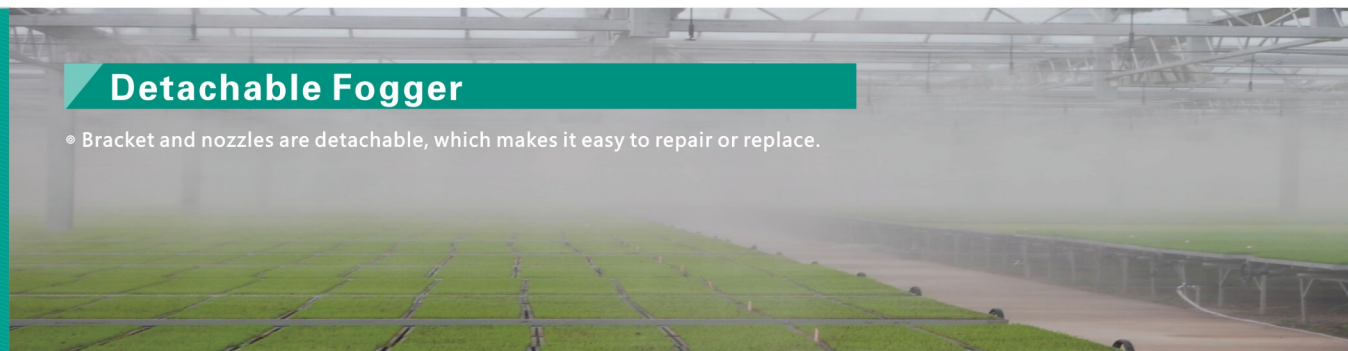
Water Pressure (Mpa)		0.25		0.3		0.35		0.4	
NO.	Nozzle color	Flow (L/H)	Range (m)	Flow (L/H)	Range (m)	Flow (L/H)	Range (m)	Flow (L/H)	Range (m)
1311		8.0	0.9-1.0	8.8	0.9-1.0	9.5	0.9-1.0	10.1	0.9-1.0
1312		6.1	0.9-1.0	6.7	0.9-1.0	7.2	0.9-1.0	7.7	0.9-1.0
1313		14.2	0.9-1.0	15.6	0.9-1.0	16.7	0.9-1.0	17.8	0.9-1.0
1314		17.7	0.9-1.0	19.5	0.9-1.0	20.8	0.9-1.0	22.2	0.9-1.0

Water Pressure (Mpa)		0.25		0.3		0.35		0.4	
NO.	Nozzle color	Flow (L/H)	Range (m)	Flow (L/H)	Range (m)	Flow (L/H)	Range (m)	Flow (L/H)	Range (m)
1311B		5.7	0.9-1.0	6.3	0.9-1.0	6.7	0.9-1.0	7.4	0.9-1.0

Note: Range was measured when the nozzle was horizontal mounted.

INLET	6mm Female conic
QTY	8000pcs/ctn
G.W.	19kg
MEAS	42*34*30cm





### Detachable Fogger

• Bracket and nozzles are detachable, which makes it easy to repair or replace.



INLET	6mm Female conic
QTY	1000pcs/ctn
G.W.	14kg
MEAS	60*34*31cm

### 4 Outlet Fogger

NO.	Nozzle color/ Diameter	0.25		0.3		0.35		0.4	
		Flow (L/H)	Radius (m)	Flow (L/H)	Radius (m)	Flow (L/H)	Radius (m)	Flow (L/H)	Radius (m)
1341	Black	31.9	0.9-1.0	35.0	0.9-1.0	37.8	0.9-1.0	40.3	0.9-1.0
1342	Grey	24.4	0.9-1.0	26.7	0.9-1.0	28.6	0.9-1.0	30.6	0.9-1.0
1343	Yellow	56.7	0.9-1.0	62.2	0.9-1.0	66.7	0.9-1.0	71.0	0.9-1.0
1344	Blue	70.6	0.9-1.0	77.8	0.9-1.0	83.3	0.9-1.0	88.9	0.9-1.0

Note: Radius was measured at the same horizontal plane with the nozzle.



INLET	6mm Female conic
QTY	600pcs/ctn
G.W.	9kg
MEAS	60*34*31cm

### 5 Outlet Fogger

NO.	Nozzle color/ Diameter	0.25		0.3		0.35		0.4	
		Flow (L/H)	Radius (m)	Flow (L/H)	Radius (m)	Flow (L/H)	Radius (m)	Flow (L/H)	Radius (m)
1351	Black	39.9	0.9-1.0	43.8	0.9-1.0	47.3	0.9-1.0	50.4	0.9-1.0
1352	Grey	30.5	0.9-1.0	33.4	0.9-1.0	35.8	0.9-1.0	38.3	0.9-1.0
1353	Yellow	70.9	0.9-1.0	77.8	0.9-1.0	83.4	0.9-1.0	88.8	0.9-1.0
1354	Blue	88.3	0.9-1.0	97.3	0.9-1.0	104.1	0.9-1.0	111.1	0.9-1.0

Note: Radius was measured at the same horizontal plane with the nozzle.



INLET	6mm Female conic
QTY	700pcs/ctn
G.W.	13.4kg
MEAS	60*34*31cm

### 6 Outlet Fogger

NO.	Nozzle color/ Diameter	0.25		0.3		0.35		0.4	
		Flow (L/H)	Radius (m)	Flow (L/H)	Radius (m)	Flow (L/H)	Radius (m)	Flow (L/H)	Radius (m)
1361	Black	47.9	0.9-1.0	52.5	0.9-1.0	56.7	0.9-1.0	60.5	0.9-1.0
1362	Grey	36.6	0.9-1.0	40.1	0.9-1.0	42.9	0.9-1.0	45.9	0.9-1.0

Note: Radius was measured at the same horizontal plane with the nozzle.



INLET	6mm Female conic
QTY	500pcs/ctn
G.W.	11.2kg
MEAS	60*34*31cm

### 7 Outlet Fogger

NO.	Nozzle color/ Diameter	0.25		0.3		0.35		0.4	
		Flow (L/H)	Radius (m)	Flow (L/H)	Radius (m)	Flow (L/H)	Radius (m)	Flow (L/H)	Radius (m)
1371	Black	55.8	0.9-1.0	61.3	0.9-1.0	66.2	0.9-1.0	70.5	0.9-1.0
1372	Grey	42.7	0.9-1.0	46.7	0.9-1.0	50.1	0.9-1.0	53.6	0.9-1.0

Note: Radius was measured at the same horizontal plane with the nozzle.

INLET	6mm Female conic
QTY	20000pcs/ctn
G.W.	15.4kg
MEAS	42*34*30cm

### Simple Deflecting Mist Sprayer

NO.	Nozzle color	0.15		0.2		0.25		0.3	
		Flow (L/H)	Radius (m)	Flow (L/H)	Radius (m)	Flow (L/H)	Radius (m)	Flow (L/H)	Radius (m)
1402	Blue	40	1-1.1	47	1-1.1	53	1-1.1	55	1-1.1

INLET	M5/M6 Male thread
QTY	34000pcs/ctn
G.W.	22.5kg
MEAS	42*34*30cm

### Thread Deflecting Mist Sprayer

NO.	Water Pressure (Mpa)	0.15		0.2		0.25		0.3	
		Flow (L/H)	Radius (m)	Flow (L/H)	Radius (m)	Flow (L/H)	Radius (m)	Flow (L/H)	Radius (m)
1414	M5 Thread, φ1.4 Hole	76	1-1.2	90	1-1.2	101	1-1.2	110	1-1.2
1425	M6 Thread, φ1.6 Hole	98	1.2-1.4	114	1.2-1.4	127	1.2-1.4	140	1.2-1.4

Other Types:  
1413 M5xΦ1.2 1415 M5xΦ1.6 1416 M5xΦ1.9  
1423 M6xΦ1.2 1424 M6xΦ1.4 1426 M6xΦ1.9

INLET	6mm Male conic
QTY	10000pcs/ctn
G.W.	16.5kg
MEAS	40*32*28cm

### Frameless Spinner

NO.	Nozzle color	0.2		0.25		0.3	
		Flow (L/H)	Radius (m)	Flow (L/H)	Radius (m)	Flow (L/H)	Radius (m)
1504	Red	142.8	2.7	164.6	2.9	183.3	3.1

Note: Tested in the breezeless outdoors, upside down installed, 1.8m above the ground.

INLET	6mm Male conic
QTY	30000pcs/ctn
G.W.	17.7kg
MEAS	40*32*28cm

### Vibrating Mist Spayer

NO.	Nozzle color	0.15		0.2		0.25		0.3	
		Flow (L/H)	Radius (m)	Flow (L/H)	Radius (m)	Flow (L/H)	Radius (m)	Flow (L/H)	Radius (m)
1602	Blue	34.7	1.4-1.5	41.4	1.4-1.5	46.9	1.4-1.5	52.2	1.4-1.5
1603	Green	49.3	1.5-1.6	58.9	1.5-1.6	66.7	1.5-1.6	74.2	1.5-1.6

Note: Tested in the breezeless outdoors, 0.4m above the ground.

INLET	6mm Female conic
QTY	20000pcs/ctn
G.W.	20kg
MEAS	56*31*32cm

### Rectangle Deflecting Sprinkler

• Covers a 0.8x3m rectangle area

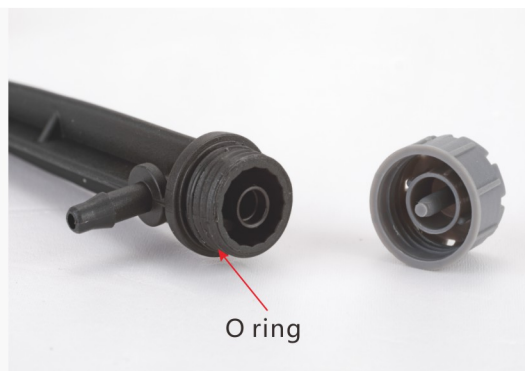
NO.	Nozzle color	0.15		0.2		0.25		0.3	
		Flow (L/H)	Radius (m)	Flow (L/H)	Radius (m)	Flow (L/H)	Radius (m)	Flow (L/H)	Radius (m)
1432	Black	21.6	1.5	27.3	1.5	32.8	1.7	38.9	1.8

Note: Tested in the breezeless outdoors, upside down installed, 1.8m above the ground.  
Create a rectangle moisture area, width 0.7-0.8m.



### Adjustable Sprinkler On Stake

- Different spray form for different plants: radial type and centrifugal type.
- Adjustable flow and range for different purpose: sprinkling irrigation, drip irrigation or shut down.
- O ring prevents leaking.

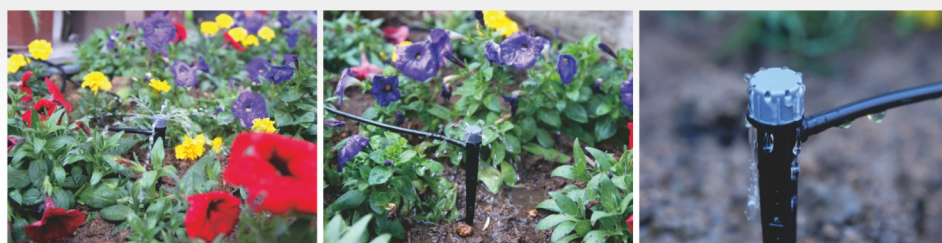


### Adjustable String Sprinkler On Stake



2401

INLET	3x5 Barb conic
QTY	3000pcs/ctn
G.W.	14.2kg
MEAS	56*31*32cm



Large-Scale Spray      Close-Range Spray      Drip Irrigation

Water Pressure (Mpa)	0.1	0.15	0.2	0.25	0.3
Flow (L/H)	0-41.5	0-53.4	0-63.2	0-67.6	0-74.4
Radius (m)	0-0.15	0-0.2	0-0.25	0-0.3	0-0.35

### Adjustable Centrifugal Sprinkler On Stake



2402

INLET	3x5 Barb conic
QTY	3000个/pcs/ctn
G.W.	15.3kg
MEAS	56*31*32cm



Large-Scale Spray      Close-Range Spray      Drip Irrigation

Water Pressure (Mpa)	0.1	0.15	0.2	0.25	0.3
Flow (L/H)	0-45.5	0-57.2	0-67.7	0-76.2	0-86.4
Radius (m)	0-0.3	0-0.5	0-0.8	0-1.1	0-1.3

### Weight



5421



5422

NO.	5421	5422
Size	Φ30x65	Φ30x52
Weight	40g	40g

### Anti leak



4101



4105



4106



4201

NO.	4201A(High pressure)	4201B(Low pressure)
Opening pressure	0.2Mpa	0.1Mpa

### Use

- The system pressure rise, valve open, allowing the flow through ;
- The system pressure drop, valve closed, block the flow through
- Prevent the water leaking when the system is shut down, to protect the seedling and the terrain.

### Characteristic

- Various interfaces and combinations to meet the different installation requirements.

### Rod

NO.	5205
Length	50cm



5205





**Connector For Micro Sprinkler System**

- Use for the installation and connection of micro sprinklers and hoses.
- Various interfaces (barb/male conic/female conic/thread), combined with each other to create more types of connection.
- Suit for: 4x7mm hose.



NO.	5141	5142	5143	5144	5145	5146	5147
Name	4x7 Coupling	4x7 Barb+6mm Male Conic	4x7 Barb End Plug	6mm Male Conic Plug	4x7 Barb+6mm Female Conic	M8 Male Thread+6mm Female Conic	6mm Female Conic Coupling



NO.	5148	5149	51414
Name	Stand Holder For Micro Sprinkler Use:6mm/6mm Rod	6mm Male Conic Coupling	M5 Male Thread+6mm Male Conic



NO.	5194A	5194B
Name	6mm Female Conic+1/2" Male Thread	6mm Male Conic+1/2" Male Thread

**Damping Rotating Sprinkler**

- Angle of elevation: -8°-24°



INLET	1/2" Male thread
QTY	360pcs/ctn
G.W.	10kg
MEAS	42*34*30cm

Water Pressure (Mpa)		0.25		0.3		0.35	
NO.	Nozzle color	Flow (L/H)	Radius (m)	Flow (L/H)	Radius (m)	Flow (L/H)	Radius (m)
3102		130	6.5-7	143.3	6.5-7	156.7	6.5-7
3103		175	7-7.5	193.3	7-7.5	210	7-7.5
3104		233.3	6.5-7	260	6.5-7	283.3	6.5-7

Note:Tested in the breezeless outdoors,1.2m above the ground.



3302



3303



3302-B

**R10 Rotating Sprinkler**

- Unique multi-hole nozzle achieves excellent even screen spray.Slight droplets minimize the impulse of the falling water towards the plants and leave no blind zone

INLET	1/2" Male thread
QTY	300pcs/ctn
G.W.	13.6kg
MEAS	56*31*32cm

**R10 Rotating Sprinkler 180°**

- Spray range is 180° with road protector.

INLET	1/2" Male thread
QTY	150pcs/ctn
G.W.	9.7kg
MEAS	56*31*32cm

Water Pressure (Mpa)		0.25		0.3		0.35		0.4	
NO.	Nozzle color	Flow (L/H)	Radius (m)	Flow (L/H)	Radius (m)	Flow (L/H)	Radius (m)	Flow (L/H)	Radius (m)
3301		330	9.5-10	370	9.5-10	400	9.5-10	440	9.5-10
3302		465	9.5-10	513	9.5-10	553	9.5-10	595	9.5-10
3303		550	9.5-10	608	9.5-10	657	9.5-10	710	9.5-10
3302-B		391	9.5-10	433	9.5-10	473	9.5-10	506	9.5-10

Note:Tested in breezeless outdoors,1.2m above the ground.



3202

3203

**Dual-nozzles Rotating Sprinkler**

- Moderate range and flow rate.
- Even spraying.

INLET	1/2" Male thread
QTY	1000pcs/ctn
G.W.	11kg
MEAS	41*33*30cm

Water Pressure (Mpa)		0.25		0.3		0.35	
NO.	Nozzle color	Flow (L/H)	Radius (m)	Flow (L/H)	Radius (m)	Flow (L/H)	Radius (m)
3202		175	6.5-7	196.7	6.5-7	216.7	6.5-7
3203		258.3	7-7.5	291.7	7-7.5	323.3	7-7.5

Note:Tested in breezeless outdoors,1.2m above the ground.



**Butterfly Sprinkler**

- The sprinkler has three parts: rotator, frame and copper or stainless steel made fixer. Free rotation with little abrasion. Precise runner system leads to excellent water scattering and distribution.



NO.	3435
INLET	1/2" Male thread
QTY	350pcs/ctn
G.W.	16.6kg
MEAS	60*34*31cm
NO.	3430
INLET	1/2" Male thread
QTY	450pcs/ctn
G.W.	14.4kg
MEAS	60*34*31cm

Water Pressure (Mpa)	0.25		0.3		0.35		0.4	
	Flow (L/H)	Radius (m)	Flow (L/H)	Radius (m)	Flow (L/H)	Radius (m)	Flow (L/H)	Radius (m)
NO.								
3435	500	5-6	510	5-6	580	5-6	640	5-6
3430	410	5-6	460	5-6	510	5-6	550	5-6

Note: Tested in breezeless outdoors, 1.2m above the ground.

**Anti Pest Rotating Sprinkler**

- The water split to two equal water jets, that contribute to a balanced sprinkler, providing high water distribution uniformity.
- Filter inside the sprinkler ensures clean water inside the nozzle. This filter can be cleaned easily if needed.
- Pop-up mechanism which opens only during operation, preventing insects and dirt particles from obstructing the sprinkler.



INJECTING ELEVATION	24°
INLET	1/2" Male thread
QTY	300pcs/ctn
G.W.	16.8kg
MEAS	60*34*31cm

Spread mage 180° with road protector

Water Pressure (Mpa)	No. Nozzle color/Diameter	0.2		0.25		0.3		0.35	
		Flow (L/H)	Radius (m)	Flow (L/H)	Radius (m)	Flow (L/H)	Radius (m)	Flow (L/H)	Radius (m)
NO.									
3502	1.4	213	6.0	242	6.2	267	6.4	293	6.5
3503	1.8	303	7.0	343	7.2	380	7.5	417	7.5
3504	2.2	397	8.0	445	8.2	490	8.2	532	8.2
3505	2.6	487	8.0	543	8.5	596	8.5	650	8.5
3506	3.0	600	8.2	680	8.5	750	8.6	815	8.5

Note: Tested in the breezeless outdoors, 1.2m above the ground.

**Wobbling Sprinkler**

- Distribute even and gentle droplets at low pressures.
- Inlet : 1/2" male or 3/4" male



INLET	1/2" or 3/4" Male thread
QTY	150pcs/ctn
G.W.	11.5kg
MEAS	60*34*31cm

Water Pressure (Mpa)	NO.	No. Nozzle color/Diameter	0.1		0.15		0.2		0.25		0.3	
			Flow (m <sup>3</sup> /H)	Radius (m)	Flow (m <sup>3</sup> /H)	Radius (m)	Flow (m <sup>3</sup> /H)	Radius (m)	Flow (m <sup>3</sup> /H)	Radius (m)	Flow (m <sup>3</sup> /H)	Radius (m)
	3601	2.4	0.17	5.0	0.23	6.5	0.28	7.1	0.32	7.3	0.35	7.0
	3602	2.8	0.24	5.2	0.31	6.8	0.38	7.1	0.44	7.6	0.48	7.6
	3603	3.2	0.31	5.4	0.42	6.9	0.50	7.5	0.57	7.6	0.63	7.7
	3604	3.6	0.39	5.5	0.52	7.0	0.62	7.5	0.71	7.7	0.78	7.8
	3605	4.0	0.48	5.8	0.65	7.1	0.77	7.6	0.90	7.8	1.00	7.9
	3606	4.4	0.59	6.5	0.79	7.4	0.94	7.9	1.08	8.0	1.22	8.0

Note: Tested in breezeless outdoors, 1.2m above the ground.

**Mini Wobbling Sprinkler**

- Distribute even and gentle droplets at low pressures.
- Inlet : 1/2" male



INLET	1/2" Male thread
QTY	1500pcs/ctn
G.W.	18.4kg
MEAS	56*31*32cm

Water Pressure (Mpa)	NO.	No. Nozzle color/Diameter	0.15		0.2		0.25		0.3	
			Flow (m <sup>3</sup> /H)	Radius (m)	Flow (m <sup>3</sup> /H)	Radius (m)	Flow (m <sup>3</sup> /H)	Radius (m)	Flow (m <sup>3</sup> /H)	Radius (m)
	3701	1.4	0.09	5.5	0.1	5.8	0.11	6	0.12	6.2
	3702	1.8	0.14	5.9	0.16	6.4	0.18	6.8	0.2	6.9
	3703	2.2	0.26	6.3	0.29	6.9	0.31	7	0.33	7
	3704	2.6	0.37	6.6	0.41	6.9	0.42	7	0.45	6.9
	3705	3.0	0.48	6.6	0.54	7	0.56	7.1	0.6	7
	3706	3.4	0.61	6.6	0.69	7.1	0.7	7.1	0.76	7.1

Note: Tested in breezeless outdoors, 1.2m above the ground.



Micro Sprinklers

Medium-range Sprinklers

Drip Irrigation

Accessories

Suit Combination



5035SD

5035

**3/4" Impact Sprinkler**

• Precise design, precision manufacture.  
Stable operation, even spray.

INLET	3/4" Male thread
QTY	100pcs/ctn
G.W.	13.6kg
MEAS	43*35*33cm

No. Main nozzle color Main nozzle diameter	Water Pressure ( Mpa )	Flow ( m <sup>3</sup> /H )	Flow (Main nozzle only) (m <sup>3</sup> /H)	Radius ( m )
5035-0 Blue 3.5mm	0.2	0.95	0.55	11.0
	0.3	1.18	0.68	11.5
	0.4	1.39	0.82	12.0
	0.5	1.59	0.92	12.0
5035-1 Black 4.0mm	0.2	1.15	0.78	11.0
	0.3	1.43	0.97	12.0
	0.4	1.75	1.14	13.0
	0.5	1.98	1.30	13.5
5035-2 Brown 4.5mm	0.2	1.39	1.00	11.5
	0.3	1.72	1.24	13.0
	0.4	2.03	1.45	14.0
	0.5	2.31	1.64	14.5
5035-3 Purple 5.0mm	0.2	1.60	1.21	11.5
	0.3	2.00	1.51	13.5
	0.4	2.36	1.77	14.5
	0.5	2.62	2.02	15.5
5035-4 Orange color 5.5mm	0.2	1.86	1.47	12.0
	0.3	2.32	1.83	13.0
	0.4	2.73	2.14	15.0
	0.5	3.08	2.42	16.0
5035-5 Red 6.0mm	0.2	2.09	1.70	12.0
	0.3	2.60	2.12	13.5
	0.4	3.05	2.47	15.5
	0.5	3.40	2.79	16.5
5035-6 Grey 6.5mm	0.2	2.37	2.07	12.5
	0.3	2.80	2.44	14.5
	0.4	3.26	2.84	16.0
	0.5	3.66	3.21	16.5

Note: Tested in breezeless outdoors, 1.2m above the ground.



5022SD

5022

**1/2" Impact Sprinkler**

INLET	1/2" Male thread
QTY	250pcs/ctn
G.W.	13.9kg
MEAS	43*35*33cm

No. Main nozzle color Main nozzle diameter	Water Pressure ( Mpa )	Flow ( m <sup>3</sup> /H )	Flow (Main nozzle only) (m <sup>3</sup> /H)	Radius ( m )
5022-1 Purple 2.5mm	0.2	0.47	0.34	9.5
	0.25	0.52	0.38	10.0
	0.3	0.58	0.42	10.5
5022-2 Orange color 2.8mm	0.2	0.55	0.43	10.0
	0.25	0.61	0.47	10.5
	0.3	0.68	0.52	10.5
5022-3 Red 3.0mm	0.2	0.61	0.48	10.0
	0.25	0.68	0.54	10.5
	0.3	0.76	0.60	10.5
5022-4 Green 3.2mm	0.2	0.67	0.55	10.5
	0.25	0.75	0.61	11.0
	0.3	0.83	0.68	11.5
5022-5 Blue 3.5mm	0.2	0.78	0.65	10.5
	0.25	0.87	0.73	11.0
	0.3	0.96	0.81	11.5
5022-6 Black 4.0mm	0.2	0.93	0.82	11.0
	0.25	1.04	0.91	11.5
	0.3	1.16	1.01	11.5

Note: Tested in the breezeless outdoors, 1.2m above the ground.



5035SDPC

**3/4" Part Circle Impact Sprinkler**

INLET	3/4" Male thread
QTY	100pcs/ctn
G.W.	13.6kg
MEAS	43*35*33cm

No. Nozzle color Nozzle diameter	Water Pressure ( Mpa )	Flow ( m <sup>3</sup> /H )	Radius ( m )
5035-0 Blue 3.5mm	0.2	0.55	11.0
	0.3	0.68	11.5
	0.4	0.82	12.0
	0.5	0.92	12.0
5035-1 Black 4.0mm	0.2	0.78	11.0
	0.3	0.97	12.0
	0.4	1.14	13.0
	0.5	1.30	13.5
5035-2 Brown 4.5mm	0.2	1.00	11.5
	0.3	1.24	13.0
	0.4	1.45	14.0
	0.5	1.64	14.5
5035-3 Purple 5.0mm	0.2	1.21	11.5
	0.3	1.51	13.5
	0.4	1.77	14.5
	0.5	2.02	15.5
5035-4 Orange color 5.5mm	0.2	1.47	12.0
	0.3	1.83	13.0
	0.4	2.14	15.0
	0.5	2.42	16.0
5035-5 Red 6.0mm	0.2	1.70	12.0
	0.3	2.12	13.5
	0.4	2.47	15.5
	0.5	2.79	16.5
5035-6 Grey 6.5mm	0.2	2.07	12.5
	0.3	2.44	14.5
	0.4	2.84	16.0
	0.5	3.21	16.5



9702

**1/2" Part Circle Impact Sprinkler**

• Mechanical limit's structure and reversing gear leads to fan-shaped spray at any angle.  
• Adjustable deflector can make the water scattering nearby which improves the spray evenness.

INLET	1/2" Male thread
QTY	200pcs/ctn
G.W.	14.4kg
MEAS	60*34*31cm

No. Nozzle color Nozzle diameter	Water Pressure ( Mpa )	Flow ( m <sup>3</sup> /H )	Radius ( m )
9702-1 Purple 2.5mm	0.2	0.34	9.5
	0.25	0.38	10.0
	0.3	0.42	10.5
9702-2 Orange color 2.8mm	0.2	0.43	10.0
	0.25	0.47	10.5
	0.3	0.52	10.5
9702-3 Red 3.0mm	0.2	0.48	10.0
	0.25	0.54	10.5
	0.3	0.60	10.5
9702-4 Green 3.2mm	0.2	0.55	10.5
	0.25	0.61	11.0
	0.3	0.68	11.5
9702-5 Blue 3.5mm	0.2	0.65	10.5
	0.25	0.73	11.0
	0.3	0.81	11.5
9702-6 Black 4.0mm	0.2	0.82	11.0
	0.25	0.91	11.5
	0.3	1.01	11.5

Note: Tested in breezeless outdoors, 1.2m above the ground.



**Pop-up Sprinkler**

- Stable operation, even spray.

INLET	1/2" Female thread
QTY	150pcs/ctn
G.W.	16kg
MEAS	56*31*32cm



7114

Scope of spray 25°-360°  
1/2" Female thread  
Stretch out height 100mm

No.	Water pressure(Mpa)	0.15	0.2	0.25	0.3
7114	360° Flow(L/H)	520	610	680	760
	Radius(m)	4			

This nozzle is suitable for irrigation in green belts, flower beds, and small lawns.



**Scattering Sprinkler**

- Scope of spray 25°~ 360°.
- 1/2" Female thread, same performance as 7114.



**Connector For Medium-range Sprinkler System**

- Suit for : 9x12mm hose

Name	Off take 9mm Female Conic + Barb Starter	Inserted connector 9mm Male Conic + 12mm Barb Connector	End plug 9mm Male Conic Plug
No.	5191	5192	5195



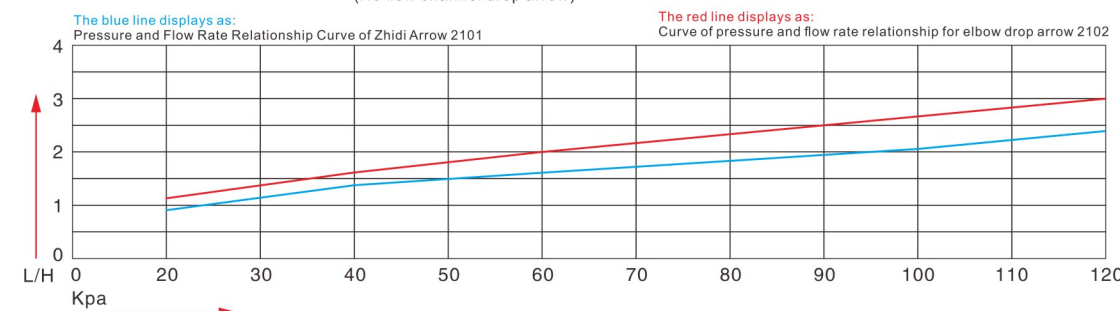
Name	Bracket, 1/2" Female thread	Bracket, 1/2" Female thread	Off take (for water band)	9mm Female Conic+1/2" Male Thread	1/2" Male Thread Plug
No.	5193	5193-B	5196	5194C	5194E



**Drip Pegs**



2101 2102 2103 (No flow channel drop arrow) 2104



**Dripper**



Name	Pressure Compensation dripper	Detachable and washable dripper
No.	2204	2216
Flow(L/H)	4	6
Suitable Pressure(Mpa)	0.1-0.35	
		2304
		4
		0.1

**Connector For Drip Irrigation System**



Name	Water distributor connector	Two way connector	Three-way water distributor	Five way water separator	Six way water separator	M4 thread straight through
No.	5131	5132	5133	5135	5136	5137

Use it for:3x5mm hose.

Characteristics  
Five pass, three pass can cover with superimposed, forming more irrigation points.



Micro Sprinklers

Medium-range Sprinklers

Drip Irrigation

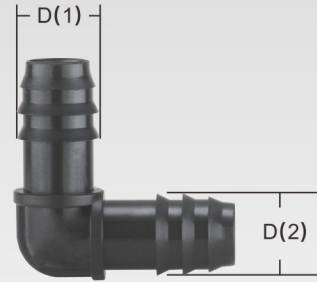
Accessories

Suit Combination

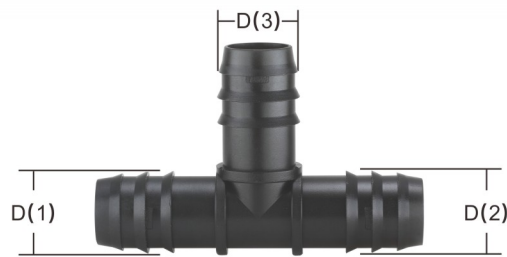
Fittings For Tube



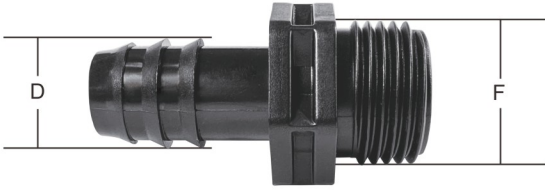
Strait coupling		
No.	D(1)(mm)	D(2)(mm)
56112A	12	12
56116A	16	16
56117A	17	17
56120A	20	20
56125A	25	25
56125x20A	25	20
56125x16A	25	16
26125x12A	25	12
56120x16A	20	16
56120x12A	20	12
56116x12A	16	12



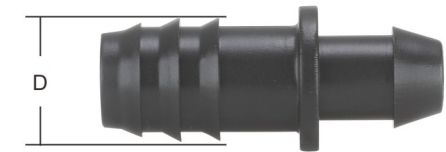
Elbow		
No.	D(1)(mm)	D(2)(mm)
56112L	12	12
56116L	16	16
56120L	20	20
56125L	25	25
56125x20L	25	20
56125x16L	25	16
56125x12L	25	12
56120x16L	20	16
56120x12L	20	12
56116x12L	16	12



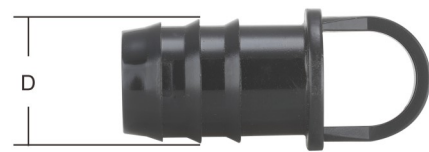
Tee		
No.	D(1)/D(2)(mm)	D(3)(mm)
56112T	12	12
56116T	16	16
56120T	20	20
56125T	25	25
56125x20T	25	20
56125x16T	25	16
26125x12T	25	12
56120x16T	20	16
56120x12T	20	12
56116x12T	16	12



Male adapter		
No.	D(mm)	F(mm)
56112x1/2M	12	1/2"
56112x3/4M	12	3/4"
56116x1/2M	16	1/2"
56116x3/4M	16	3/4"
56120x1/2M	20	1/2"
56120x3/4M	20	3/4"
56125x1/2M	25	1/2"
56125x3/4M	25	3/4"



Off take	
No.	D(mm)
56112B	12
56116B	16
56120B	20
56125B	25



End cap	
No.	D(1)(mm)
56112E	12
56116E	16
56120E	20
56125E	25

Micro Sprinklers

Medium-range Sprinklers

Drip Irrigation

Accessories

Suit Combination

Fittings For Tape



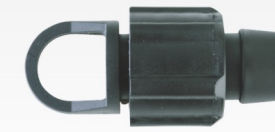
No.:56216A  
Φ 16 Straight coupling



No.:56216B  
Φ 16 Off take



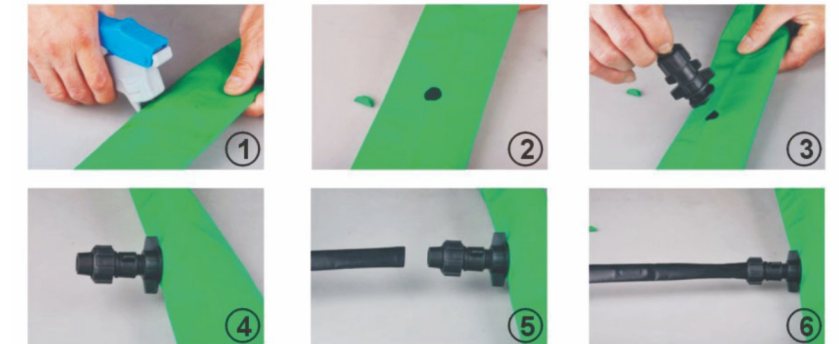
No.:56216-1/2  
Φ 16+ 1/2" Male adapter



No.:56216E  
Φ 16 End cap



No.:56316  
Φ 16 Off take  
( for water band )



No.:56216BS(1600)  
Applicable water pressure  
1.5-3.5Kpa  
flow 1600L/H  
Φ 20 Off take  
( Pressure compensating )



No.:56216BTS(1600)  
Applicable water pressure  
1.5-3.5Kpa  
flow 1600L/H  
Φ 16 Off take Tee  
( Pressure compensating )



No.:56216BTS(600)  
Applicable water pressure  
1.5-3.5Kpa  
flow 600L/H  
Φ 16 Off take tee  
( Pressure compensating )



Micro Sprinklers

Medium-range Sprinklers

Drip Irrigation

Accessories

Suit Combination

Valve

Straight Valve For PE Pipe



No.	Size
5511-12A	Φ 12+12
5511-16A	Φ 16+16



No.	Size
5521-12A	Φ 12+12
5521-16A	Φ 16+16
5521-16x12	Φ 16+12
5521-20A	Φ 20+20
5521-20x16	Φ 20+16
5521-25A	Φ 25+25
5521-25x20	Φ 25+20

Thread Valve For PE Pipe



No.	Size
5521-1/2"x16	1/2"+Φ 16
5521-3/4"x16	3/4"+Φ 16
5521-1/2"x20	1/2"+Φ 20
5521-3/4"x20	3/4"+Φ 20
5521-1/2"x25	1/2"+Φ 25
5521-3/4"x25	3/4"+Φ 25
5521-1/2"x12	1/2"+Φ 12

Valve For PE Pipe&Tape



No.	Size
5523-16x16	Φ 16+16
5523-20x16	Φ 20+16

Offtake Valve For PE Pipe



No.	Size
5511-12B	Φ 12
5511-16B	Φ 16



No.	Size
5521-12B	Φ 12
5521-16B	Φ 16



No.	Size
5521-20B	Φ 20
5521-25B	Φ 25



5640xM40T  
Off take Tee 40x1 1/4"



5640xM25T  
Off take Tee 40x3/4"

Straight Valve For Tape



No.	Size
5522-16A	Φ 16

Off take Valve For Tape



No.	Size
5522-16B	Φ 16

Thread Valve For Tape



No.	Size
5522-1/2"x16	1/2"+Φ 16
5522-3/4"x16	3/4"+Φ 16



56112C  
12 End cap



56116C  
16 End cap



56416  
16 Rubber



56418  
18 Rubber



5640xM40  
Off take 40x1/4"



56420  
20 Rubber

Micro Sprinklers

Medium-range Sprinklers

Drip Irrigation

Accessories

Suit Combination

Valve



Straight Valve For PE Pipe

No.	Size
5531-12A	Φ 12+12
5531-16A	Φ 16+16
5531-16x12	Φ 16+12
5531-20A	Φ 20+20
5531-20x16	Φ 20+16
5531-25A	Φ 25+25
5531-25x20	Φ 25+20

Offtake Valve For PE Pipe

No.	Size
5531-12B	Φ 12
5531-16B	Φ 16
5531-20B	Φ 20
5531-25B	Φ 25

Thread Valve For PE Pipe

No	Size
5531-1/2"x16	1/2"+Φ 16
5531-3/4"x16	3/4"+Φ 16
5531-1/2"x20	1/2"+Φ 20
5531-3/4"x20	3/4"+Φ 20
5531-1/2"x25	1/2"+Φ 25
5531-3/4"x25	3/4"+Φ 25
5531-1/2"x12	1/2"+Φ 12

Straight Valve For Tape

No.	Size
5532-16A	Φ 16

Off take Valve For Tape

No.	Size
5532-16B	Φ 16

Thread Valve For Tape

No.	Size
5532-1/2"x16	1/2"+Φ 16
5532-3/4"x16	3/4"+Φ 16

Valve For PE Pipe&Tape

No.	Size
5533-16x16	Φ 16+16
5533-20x16	Φ 20+16





Micro Sprinklers



**Y type screen filter**

NO.	Thread size	Filter accuracy
6125-120	3/4"	120 ( mesh )
6125-150	3/4"	150 ( mesh )
6132-120	1"	120 ( mesh )
6132-150	1"	150 ( mesh )



**Y type disc filter**

NO.	Thread size	Filter accuracy
6225-120	3/4"	120 ( mesh )
6232-120	1"	120 ( mesh )



**T type screen filter**

NO.	Thread size	Filter accuracy
6150-120	1 1/2"	120 ( mesh )
6150-150	1 1/2"	150 ( mesh )
6163S-120	2"	120 ( mesh )
6163S-150	2"	150 ( mesh )



**T type disc filter**

NO.	Thread size	Filter accuracy
6250-120	1 1/2"	120 ( mesh )
6250-80	1 1/2"	80 ( mesh )
6263S-120	2"	120 ( mesh )
6263S-150	2"	150 ( mesh )



**Wrench for T type filter**



**2" disc filter**

NO.	Thread size	Filter accuracy
6263-120	2"	120 ( mesh )
6263-40	2"	40 ( mesh )

**2" screen filter**

NO.	Thread size	Filter accuracy
6163-120	2"	120 ( mesh )

**3" disc filter**

NO.	Thread size	Filter accuracy
6290-120	3"	120 ( mesh )

**3" screen filter**

NO.	Thread size	Filter accuracy
6190-120	3"	120 ( mesh )

Medium-range Sprinklers

Drip Irrigation

Accessories

Suit Combination

Micro Sprinklers

Medium-range Sprinklers

Drip Irrigation

Accessories

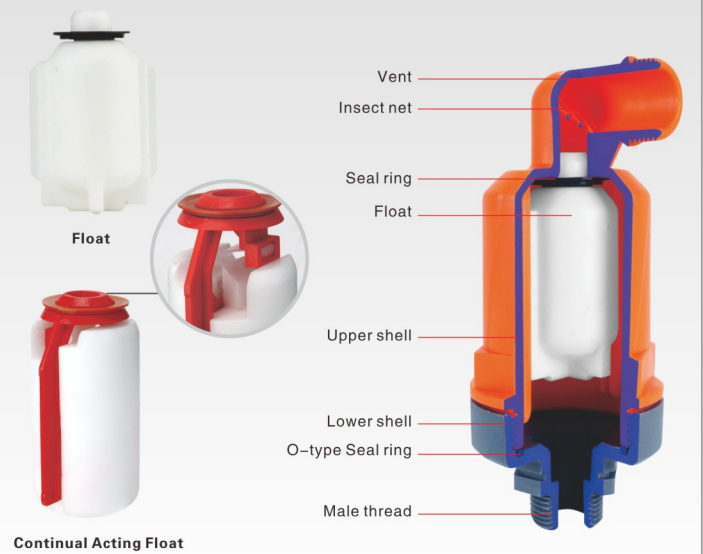
Suit Combination



**Air Vent**

Inter face : 1" male thread 1 1/4" male thread 2 male thread

Inlet	Name	
	NO.	
1"	Air Vent	6632A
1 1/4"	Continual Acting Air Vent	6640A
2"		6663A

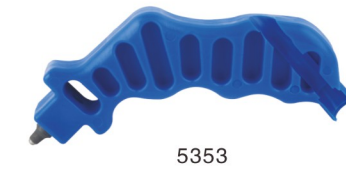


Continual Acting Float



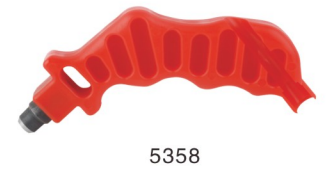
**Coupling Valve Male**

NO.	7225A	7232A
Inlet	3/4" Male thread	1" Male thread



**Hole Punch**

NO.	Hole diameter
5353	Φ3
5358	Φ8



QTY	300pcs/ctn
G.W.	13.7kg
MEAS	41*33*30cm



**Hole Punch**

Name	NO.	Hole diameter
Clamp punch	5373	Φ3

QTY	100pcs/ctn
G.W.	10.7kg
MEAS	42*34*30cm



**Lay Flat Cutter**

Name	NO.	Hole diameter
Soft belt punch	53715	Φ15

QTY	100pcs/ctn
G.W.	14.1kg
MEAS	42*34*30cm



**Lay Flat Cutter**

Name	NO.	Hole diameter
Soft belt punch	53717	Φ17

QTY	100pcs/ctn
G.W.	14.1kg
MEAS	42*34*30cm



Micro Sprinklers

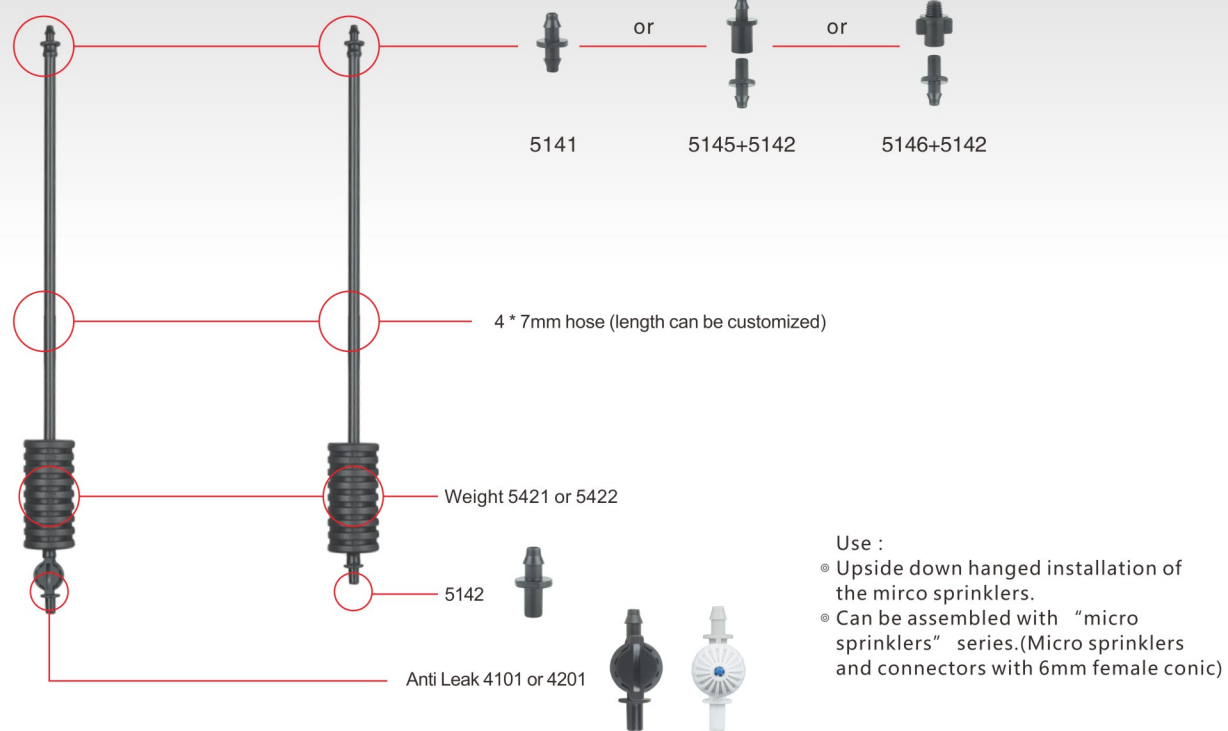
Medium-range Sprinklers

Drip Irrigation

Accessories

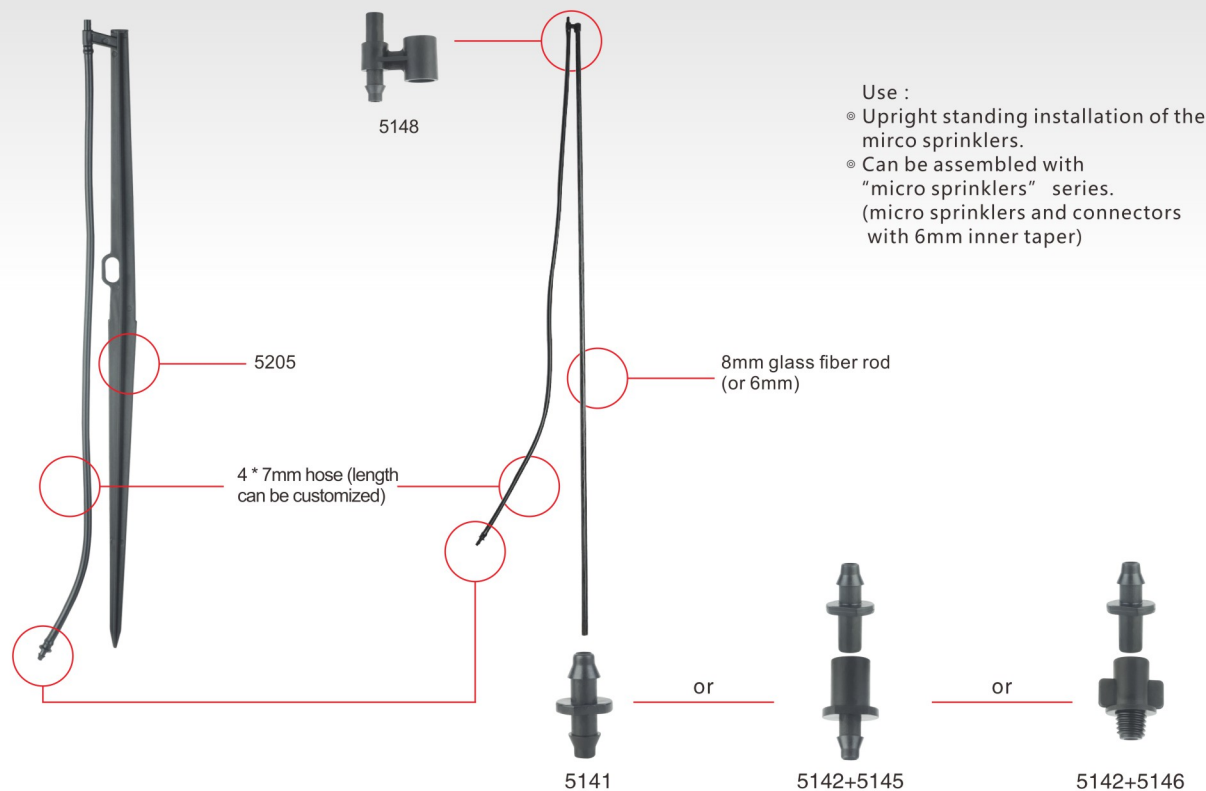
Suit Combinations

Anti Leak Invert Sets/Invert Sets



Rod Set

Holder Set



Micro Sprinklers

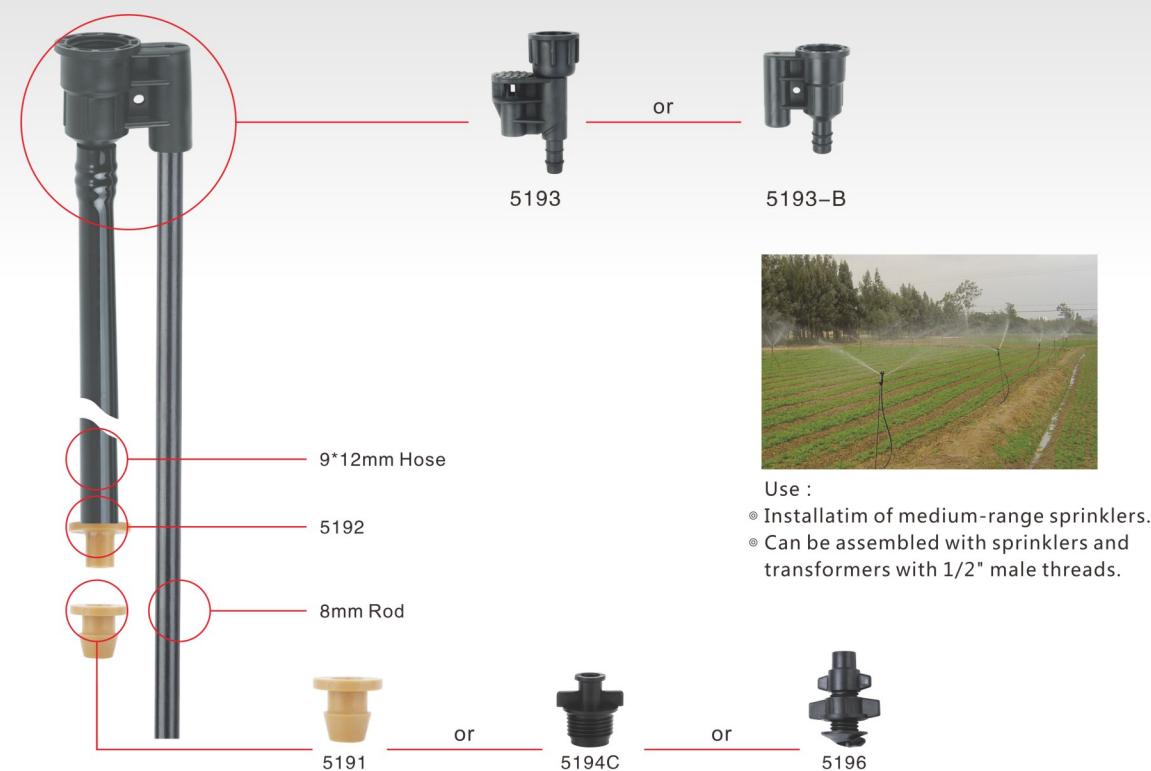
Medium-range Sprinklers

Drip Irrigation

Accessories

Suit Combinations

Holder Set



Arrow dripper set

