

# DSN Series

## Stainless Steel Mini Cylinder

(ISO6432 Standard)



- Cylinder
- Calculation
- SI
- SI A.
- SIB
- SQ
- DNT
- SC/SU
- SCT
- SC A.
- DN
- DSN**
- DN/DSN A.
- MA
- MAC
- MA/MAC A.
- MAL
- MALC
- MAL/MALC A.
- SDA
- CQ2
- TCQ2
- ADN
- TADN
- PPRM
- JHL2
- JHF2
- JHZ2
- JHY2
- JHC2
- JXH
- JXQ
- JXS
- TN
- JGP
- JSQB
- Sensor

### Features

1. Improving for adapting wide range applications, using precise polishing of piston rod, more sense of products quality and longer life of front seal.
2. Optima design and improve the production efficiency.
3. Combined with enterprise color planning and new structure design, stainless steel series cylinder integrated as the semicircular groove cramping.
4. Change processing technology of cylinder cushion structure to ensure buffering function in stabilization.
5. Improved the range of buffering fine-tune, enable customers to more easily adjust the buffer throttling speed.



DSN25X75

### Ordering Code

DSN	32	x	50	-	10	-	S	-	U	-	E	-	LB
Series	Bore	Stroke	Adjustable Stroke	Magnet	Back Form	Piston Rod Material	Mountings						
DSN: Double Acting	16	10: 10mm	S: With magnet	Blank: Standard with eye mounting	Blank: Carbon steel	Blank: Basic mountings							
	20	20: 20mm	Blank: Without magnet		E: Stainless steel	LB: Front and back mounting							
JHY2	25	30: 30mm											
JHC2	32	50: 50mm		CM: Standard with round back cover		FA: Front mounting flange							
JXQ	40	75: 75mm				FB: Back mounting flange							
DSNJ: Double-shaft with adjustable stroke		100: 100mm		U: Standard with flat back cover		SDB: Back hinge							

\* Sensor model JEL-01, Strap type "SKB-Bore", please refer to P173 for the specific ordering code.

### Specification

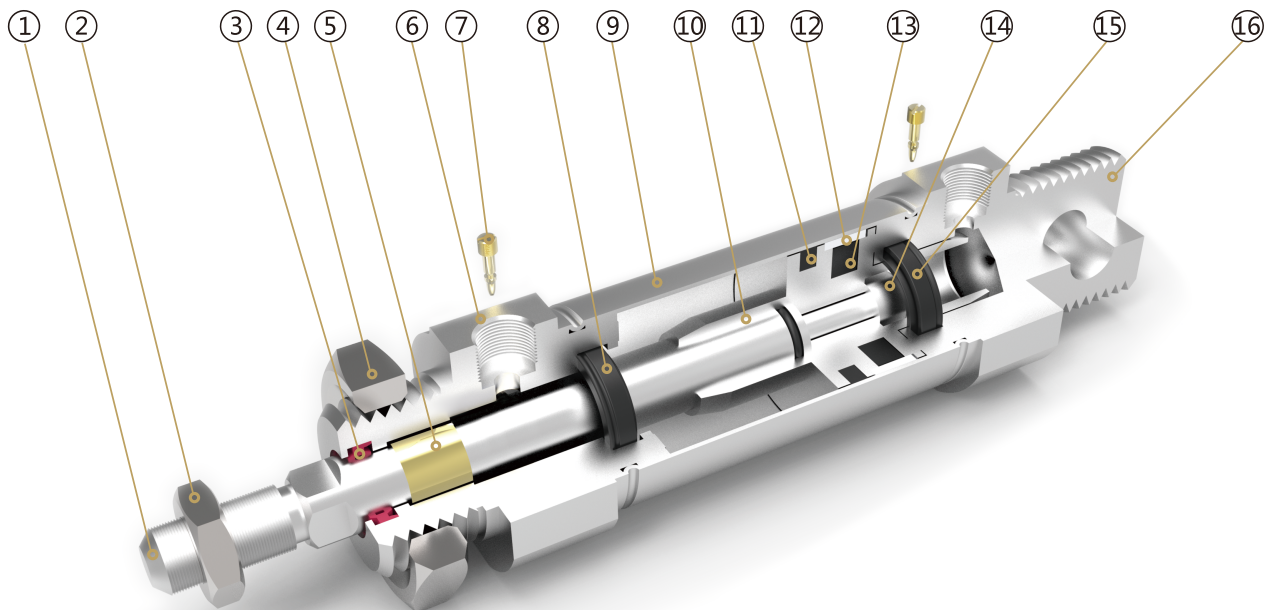
Bore (mm)	16	20	25	32	40
Operation	Double Acting				
Working Medium	Air				
Mountings	Basic LB FA FB SDB				
Operating Pressure Range	0.1 ~ 1.0MPa				
Proof Pressure	1.5 MPa				
Operating Temperature Range	-20 ~ 80°C				
Operating Speed Range	50 ~ 800mm/s				
Cushion	Adjustable Air Cushion				
Port Size	M5X0.8		G1/8"		

- Cylinder
- Calculation
- SI
- SI A.
- SIB
- SQ
- DNT
- SC/SU
- SCT
- SC A.
- DN
- DSN**
- DN/DSN A.
- MA
- MAC
- MA/MAC A.
- MAL
- MALC
- MAL/MALC A.
- SDA
- CQ2
- TCQ2
- ADN
- TADN
- PPRM
- JHL2
- JHF2
- JHZ2
- JHY2
- JHC2
- JXH
- JXQ
- JXS
- TN
- JGP
- JSQB
- Sensor

### Stroke

Bore		Standard Stroke																Max. Stroke		
DSN	16/20/25/32/40	15	20	25	30	40	50	60	75	80	100	125	150	160	175	200	250	275	300	500
	16/20/25	15	20	25	30	40	50	60	75	80	100	125	150	160	175	200	250	275	300	300
DSND/DSNJ	32/40	15	20	25	30	40	50	60	75	80	100	125	150	160	175	200	250	275	300	300

### Internal Structure



### Parts

Number	Name	Number	Name
1	Piston rod	9	Barrel
2	Hexagon nut	10	Piston
3	Shaft seal	11	Piston seal
4	Hexagon nut	12	Anti-friction seal
5	DU bearing	13	Magnet
6	Front cover	14	Socket head cap screw
7	Anti-collision gasket	15	Cushion
8	Cushion	16	Back cover

# DSN Series

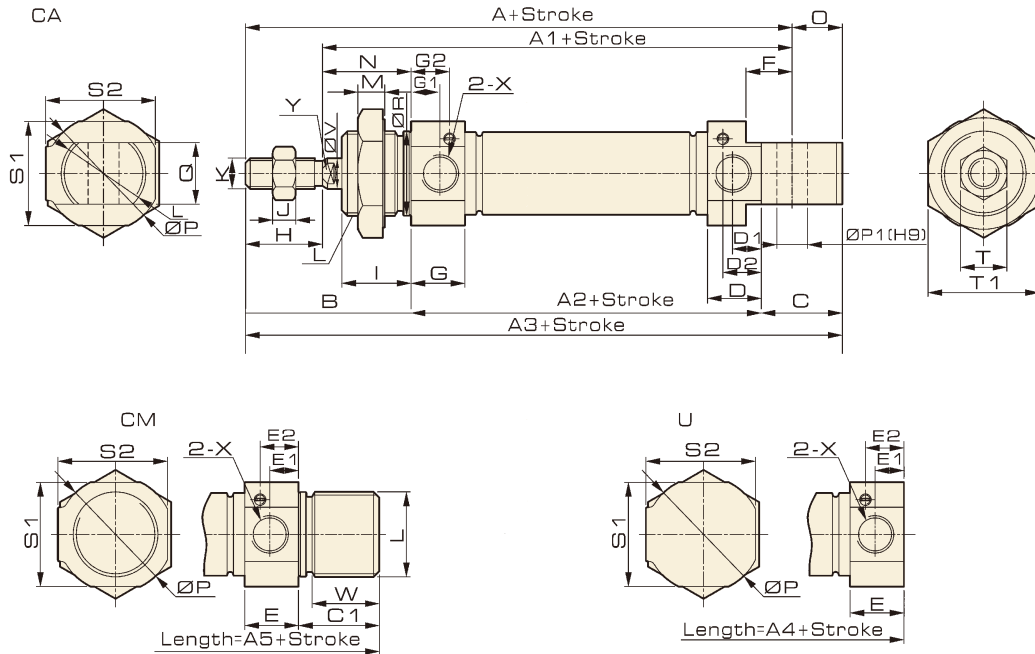
## Stainless Steel Mini Cylinder (ISO6432 Standard)



- Cylinder
- Calculation
- SI
- SI A.
- SIB
- SQ
- DNT
- SC/SU
- SCT
- SC A.
- DN
- DSN**
- DN/DSN A.
- MA
- MAC
- MA/MAC A.
- MAL
- MALC
- MAL/MALC A.
- SDA
- CQ2
- TCQ2
- ADN
- TADN
- PPRM
- JHL2
- JHF2
- JHZ2
- JHY2
- JHC2
- JXH
- JXQ
- JXS
- TN
- JGP
- JSQB
- Sensor

### Overall Dimension

#### DSN



Cylinder with or without magnet is the same size

### Dimension

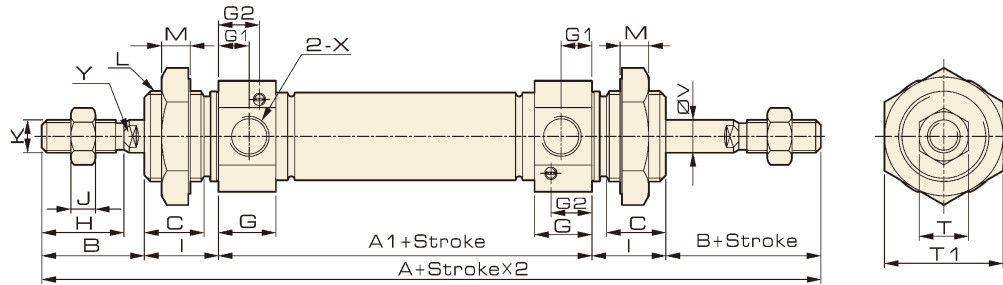
Bore Symbol	A	A1	A2	A3	A4	A5	B	C	C1	D	D1	D2	E	E1	E2	F	G	G1	G2	H	I
16	98	82	55	111	92	111	37	19	19	10.5	6	7	10.5	6	7	9	10.5	6	7	16	16
20	115	95	64	128	107	128	43	21	21	14	7.5	10	14	7.5	10	9	14	7.5	10	20	18
25	126	104	66	137	116	137	50	21	21	15	8	10.5	15	8	10.5	12	15	8	10.5	22	22
32	135	113	72	147	120	132	48	27	12	17	8.5	12	17	8.5	12	15	17	8.5	12	22	18
40	138	115	72	150	123	136	51	27	14	16	8	11.5	16	8	11.5	15	16	8	11.5	23	20

Bore Symbol	J	K	L	M	N	O	P	P1	Q	R	S1	S2	T	T1	X	V	W	Y
16	5	M6×1	M16×1.5	6	21	13	21	6	12	16	19	19	10	24	M5×0.8	6	15.5	5
20	6	M8×1.25	M22×1.5	7	23	13	30	8	16	22	27	28.5	14	29	G1/8	8	17.5	6
25	6	M10×1.25	M22×1.5	7	28	11	30	8	16	22	27	28.5	17	29	G1/8	10	17.5	8
32	6	M10×1.25	M27×2	9	26	12	38	10	20	27	35	36.5	17	36	G1/8	12	8	10
40	8	M14×1.5	M33×2	9	28	12	45	10	20	33	42	43.5	22	45	G1/4	16	10	14

- Cylinder
- Calculation
- SI
- SI A.
- SIB
- SQ
- DNT
- SC/SU
- SCT
- SC A.
- DN
- DSN**
- DN/DSN A.
- MA
- MAC
- MA/MAC A.
- MAL
- MALC
- MAL/MALC A.
- SDA
- CQ2
- TCQ2
- ADN
- TADN
- PPRM
- JHL2
- JHF2
- JHZ2
- JHY2
- JHC2
- JXH
- JXQ
- JXS
- TN
- JGP
- JSQB
- Sensor

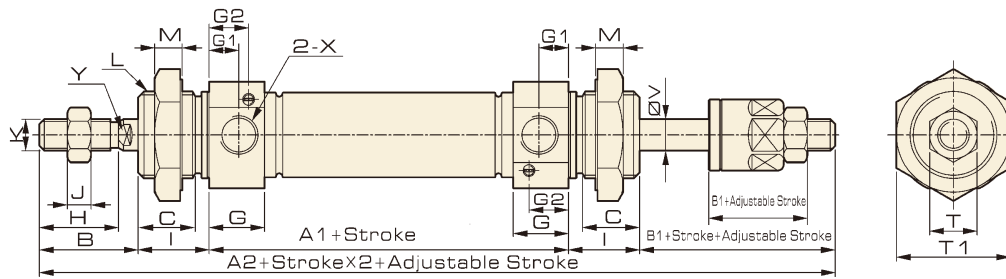
### Overall Dimension

#### DSND



Cylinder with or without magnet is the same size

#### DSNJ



Cylinder with or without magnet is the same size

### Dimension

Bore Symbol	A	A1	A2	B	B1	C	D	G	G1	G2	H	I	J	K	L	M	T	T1	V	X
16	129	55	129	21	21	13	5	10.5	6	7	16	16	5	M6×1	M16×1.5	6	10	24	6	M5×0.8
20	150	64	150	27	25	14.5	6	14	7.5	10	20	18	6	M8×1.25	M22×1.5	7	14	29	8	G1/8
25	166	66	165	28	27	18.5	8	15	8	10.5	22	22	6	M10×1.25	M22×1.5	7	17	29	10	G1/8
32	168	72	165	30	27	14	10	17	8.5	12	22	18	6	M10×1.25	M27×2	9	17	36	12	G1/8
40	174	72	172	31	29	16	14	16	8	11.5	23	20	8	M14×1.5	M33×2	9	22	45	16	G1/4

# DN / DSN

## Mini Cylinder Accessory



Cylinder  
Calculation

SI  
SI A.  
SIB  
SQ  
DNT  
SC/SU  
SCT  
SC A.  
DN  
DSN  
DN/DSN A.

MA  
MAC  
MA/MAC A.

MAL  
MALC  
MAL/MALC A.

SDA  
CQ2  
TCQ2

ADN  
TADN

PPRM  
JHL2  
JHF2

JHZ2  
JHY2  
JHC2

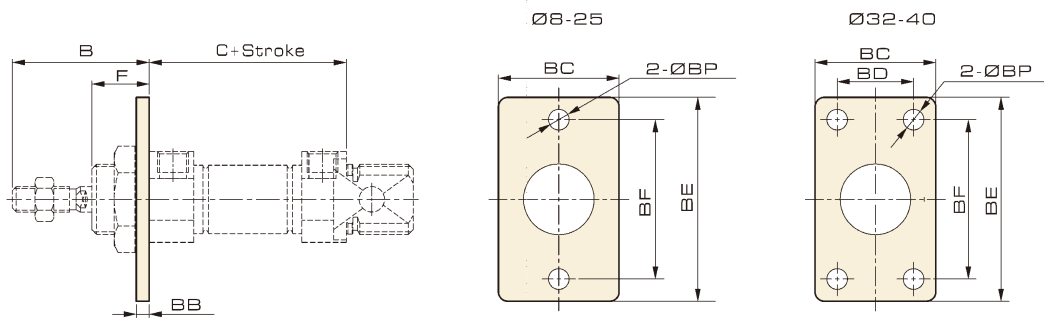
JXH  
JXQ  
JXS

TN  
JGP  
JSQB

Sensor

### Overall Dimension

#### FA

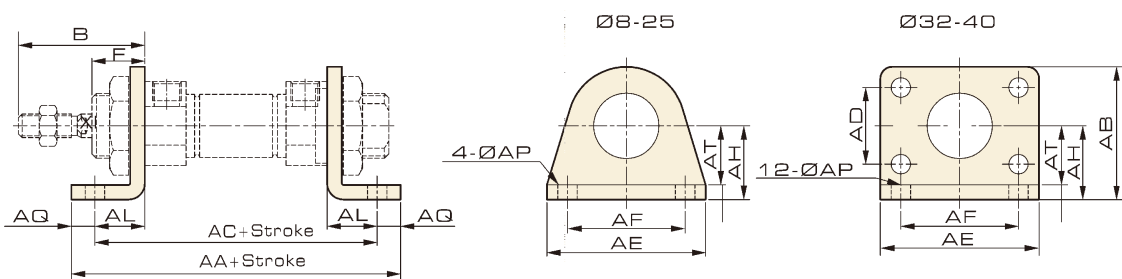


### Dimension

Symbol Bore Stroke	B	C (DN, DSN Series)	C (DS/DT Series)			BB	BC	BD	BE	BF	BP	F
			0-50	50-100	100-150							
8	28	46	71	-	-	3	22	-	40	30	4.5	12
10	28	46	71	-	-	3	22	-	40	30	4.5	12
12	38	50	75	-	-	4	30	-	52	40	5.5	17
16	37	55	80	105	-	4	30	-	52	40	5.5	16
20	43	64	89	114	139	5	40	-	66	50	6.6	16
25	50	66	91	116	141	5	40	-	66	50	6.6	22
32	48	72	97	122	147	5	45	20	80	60	7	18
40	51	72	97	122	147	5	50	30	100	80	9	20

### Overall Dimension

#### LB

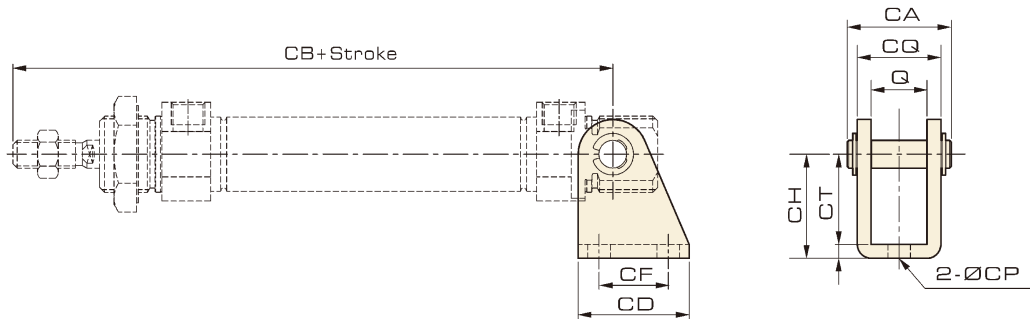


### Dimension

Symbol Bore Stroke	B	AA (DN, DSN Series)	AA (DS/DT Series)			AB	AC (DN, DSN Series)	AC (DS/DT Series)			AD	AE	AF	AH	AL	AP	AQ	AT	F
			0-50	50-100	100-150			0-50	50-100	100-150									
8	28	78	103	-	-	-	68	93	-	-	-	35	25	16	11	4.5	5	3	12
10	28	78	103	-	-	-	68	93	-	-	-	35	25	16	11	4.5	5	3	12
12	38	90	115	-	-	-	78	103	-	-	-	42	32	20	14	5.5	6	4	17
16	37	95	120	145	-	-	83	108	133	-	-	42	32	20	14	5.5	6	4	16
20	43	114	139	164	189	-	98	123	148	173	-	54	40	25	17	6.6	8	5	16
25	50	116	141	166	191	-	100	125	150	175	-	54	40	25	17	6.6	8	5	22
32	48	118	143	168	193	49	104	129	154	179	28	66	52	28	16	7	7	5	18
40	51	132	157	182	207	58	112	137	162	187	30	80	60	33	20	9	10	5	20

Overall Dimension

SDB

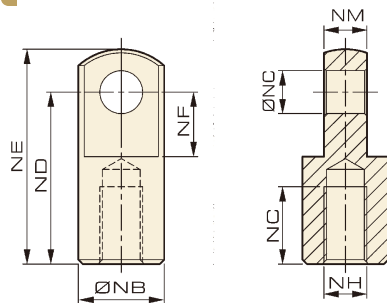


Dimension

Symbol Bore Stroke	D	Q	CA	CB (MAL Series)	CB(MSAL/MTAL Series)			CD	CF	CH	CT	CP	CQ
					0-50	50-100	100-150						
8	11.3	8.1	17.3	76	101	-	-	20	12.5	24	2.5	4.5	13.1
10	11.3	8.1	17.3	76	101	-	-	20	12.5	24	2.5	4.5	13.1
12	13	12.1	23.3	91	116	-	-	25	15	27	3	5.5	18.1
16	13	12.1	23.3	98	123	148	-	25	15	27	3	5.5	18.1
20	16	16.1	30	115	140	165	190	32	20	30	4	6.5	24.1
25	16	16.1	30	126	151	176	201	32	20	30	4	6.5	24.1
32	19.5	20.1	34.6	135	160	185	210	41	24	35	4	9	28.1
40	26	20.1	36.6	138	163	188	213	52	30	40	5	9	30.1

Overall Dimension

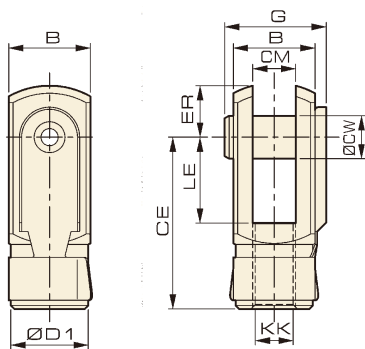
I Knuckle



Dimension

Model	NB	NC	ND	NE	NF	NG	NH	NM	Bore	8	10	12	16	20	25	32	40	
F-M04070I	10	4	16	21	7	6	M4×0.7	4	Adapted fitting form	√	√							
F-M06100I	12	5	21	28	8.5	8	M6×1	6				√	√					
F-M08125I	16	8	30	40	11	15	M8×1.25	8						√				
F-M10125I	20	10	40	52	15	18	M10×1.25	10							√	√		
F-M12125I	24	12	48	62	24	18	M12×1.25	12										
F-M14150I	28	14	56	72	28	21	M14×1.5	14										√

CK Knuckle



Model	KK	B	CE	CM	CR	CW	D1	G	LE	
F-M04070CK	M4X0.7	8	16	4	21	4	8	11	8	DSN8, DSN10
F-M06100CK	M6×1	12	24	6	31	6	10	16	12	DSN12, DSN16
F-M08125CK	M8×1.25	16	32	8	42	8	14	20	16	DSN20
F-M10125CK	M10×1.25	20	40	10	52	10	18	25.5	20	DSN25, DSN32
F-M12125CK	M12×1.25	24	48	12	62	12	20	29.5	24	
F-M14150CK	M14×1.5	27	56	14	72	14	24	29.5	28	DSN40
F-M16150CK	M16×1.5	32	64	16	83	16	26	38.5	32	
F-M20150CK	M20×1.5	40	80	20	105	20	34	47	40	

- Cylinder
- Calculation
- SI
- SI A.
- SIB
- SQ
- DNT
- SC/SU
- SCT
- SC A.
- DN
- DSN
- DN/DSN A.
- MA
- MAC
- MA/MAC A.
- MAL
- MALC
- MAL/MALC A.
- SDA
- CQ2
- TCQ2
- ADN
- TADN
- PPRM
- JHL2
- JHF2
- JHZ2
- JHY2
- JHC2
- JXH
- JXQ
- JXS
- TN
- JGP
- JSQB
- Sensor