



饲料 机械设备与工程
FEED
MACHINERY & ENGINEERING



创新 Innovation
共赢 win-win
服务 Service



溧阳市久隆工程机械有限公司位于江苏省溧阳市国家AAAA级旅游度假区——天目湖畔的天目湖工业园区。

溧阳市久隆工程机械有限公司专业从事于饲料机械、粮食干燥仓储、有机复合肥设备的生产制造及成套工程和电气控制系统的设计、安装和调试，并为客户提供操作、维护和培训、技术咨询及机械设备的零部件供应。

久隆公司致力于以先进的技术、优质的设备和及时的服务来提供解决饲料加工和农业加工过程的技术方案；并与国内外客户建立良好的客户关系，工程和产品已销往欧洲、亚洲、非洲等许多国家和地区，如俄罗斯、罗马尼亚、印度尼西亚、菲律宾、孟加拉、伊朗、沙特、苏丹等。

久隆公司通过不断的产品创新和工程系统的创新，持续改进和提高工程和产品品质，提高综合效率，降低使用成本，方便操作和维护，使客户在确保产品品质的前提下效益最大化，为客户创造价值，产品具有更大的比较竞争优势。久隆公司具有一支快速反应的售后服务团队，通过定时回访或电话、网络联系及时处理可能出现的问题，使问题在没有发生前得到解决。请您及时与我们联系，您的反馈将得到最迅速、最有效的反应和问题的解决。

展望未来，我们愿以节能、环保和低碳的高品质产品，完善的全流程服务，与您携手共进，共创美好的明天！

Goldlong Machinery And Engineering Co.,Ltd is located in Tianmuhu Industrial Zone, Liyang, Jiangsu, south part of China.

Goldlong Machinery is specialized in feed machinery, grain dryer and compound fertilizer machinery, and provides the projects with turn-key basis, from design, engineering, manufacturing, installation, commissioning to after-sale service, and we also provide our customer special spare parts and the training course including the operation instruction, maintenance, technical consultant.

Goldlong Machinery provides the solution of feed processing and agriculture processing, and sets up good relationship with all customers in the world. Now Goldlong machinery has exported machinery and projects to many countries, such as Russia, Romania, Indonesia, The Philippines, Bangladesh, Pakistan, Iran, Syria, Saudi Arabia and Sudan.

Goldlong Machinery focuses on the innovation of the machinery and engineering project, and tries its best to improve the quality of design, manufacturing and service, so that the project and machinery running cost and maintenance cost can be reduced, which helps the customers get maximum benefit and competitive advantages. Goldlong Machinery has one professional after-sale service team. With regularly return visit and internet communication, the problem can be solved before it happens. Please contact us! Your feed back will get quickest action and solution!

In future, we will bring our customers better quality products with low energy consumption, low carbon emission and perfect engineering service. Let us cooperate each other and create beautiful future!

成套工程 Turn-key Projects

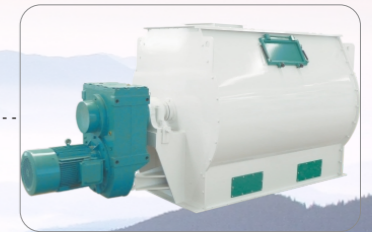
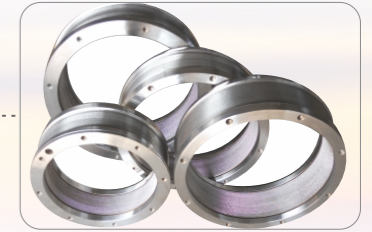
- 畜禽饲料成套工程
Poultry Feed Projects
- 水产饲料成套工程
Aqua Feed Projects
- 预混合饲料成套工程
Premix Feed Projects
- 干燥成套设备和工程
Drying Projects
- 仓储、输送成套设备和工程
Storage, Conveying Projects
- 生物质成套工程
Biomass Projects
- 有机复合肥成套工程
Compound Fertilizer Projects

单机设备 Single Machines

- 清理、除铁、除尘系列设备
Cleaning, Iron-removing and Dust Collecting Equipments
- 粉碎系列设备
Grinding Equipments
- 配料、混合系列设备
Batching and Mixing Equipments
- 制粒系列设备
Pelleting Equipment
- 膨化膨胀系列设备
Extruding and Expanding Equipments
- 冷却、碎粒、分级系列设备
Cooling, Crumbling and Sifting Equipments
- 干燥系列设备
Dryer
- 输送和其它通用设备
Conveyor and Other Auxiliary Equipments
- 复合肥加工系列设备
Fertilizer Processing Equipments

Solutions for Agro-industry with Technology . Equipment . Service

» Global services



SZLH 系列制粒机
SZLH Series Pellet Mill



主要特点说明

- 1、采用高精度齿轮传动，传动效率高，工作稳定；
- 2、整机传动系统关键部位采用进口轴承、油封，工作平稳、寿命长、噪音低；
- 3、喂料器、调质器、斜槽采用不锈钢制作，经久耐用；
- 4、喂料器转速可调，能满足生产不同饲料时的产量需求；
- 5、调质部分采用加长、加粗型，内置式蒸汽集合套能使蒸汽均匀充分地调质熟化物料，保证饲料高品质；
- 6、整机配有除铁和过载保护装置，充分考虑使用过程中对主机的保护；
- 7、采用新型蛇型弹簧联轴器，补偿大，运转更平稳；
- 8、可配单层、多层夹套调质器或双轴差径调质器，满足生产高档畜禽料及水产料的不同需求。

Main features

1. Main drive adopts high accurate gear drive with higher efficiency, steady running and low noise.
2. Feeder is made of stainless steel with anti-lump structure and adopts the frequency or electromagnetic speed regulating control two guarantee quality pellet feed.
3. Stainless steel conditioner can be customer-made to control cooking time. Special seal is adopted in tow ends of the conditioner, steam is injected in the conditioner directly, so that it can fully contact the material inside.
4. The body part is cast in special technology with high accuracy. Advanced flexible coupling connects the motor and gear box with big compensation and steady driving.
5. The die and driving wheel adopt clamp structure, the door and discharging channel is made of stainless steel with long life.
6. Iron-removing system and overload protection system is adopted to protect the main machine.

型号 / Model	SZLH350	SZLH400	SZLH420	SZLH508	SZLH678
产量 / Capacity(t/h)	2-6	3-8	4-10	6-15	12-25
功率 / Power(kw)	55	75/90	90/110	132/160	220/250
环模内径 / Die Inner Dia (mm)	350	400	420	508	673
喂料电机 / Feeder's Motor (kw)	1.1	1.5	1.5	1.5	2.2
调质器电机 / Conditioner's Motor (kw)	4	5.5	5.5	7.5	11

久隆系列制粒机
Goldlong Series Pellet Mill



高效率畜禽料制粒机
SZLH series Pellet mill



差速调质加单轴调质颗粒机
SZLH series Pellet mill



高效率畜禽料制粒机
SZLH series Pellet mill



特种水产制粒机
SZLH series Pellet mill

SFSP系列水滴型粉碎机
SFSP Series Tear-Drop Hammer Mill



主要特点说明

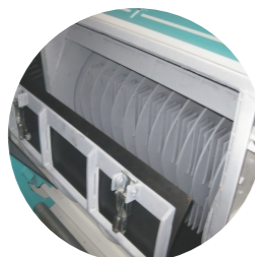
- 1、粉碎室为水滴型，有效消除粉碎过程中的环流现象，产量高；
- 2、粉碎室底部设置“U”型二次粉碎结构，更进一步提高产量，粉碎粒度更均匀；
- 3、通过调节锤筛间隙，实现粗粉碎或细粉碎，做到一机两用；
- 4、转子经精确的动平衡校验，设备噪音低，运行平稳；
- 5、新型胎型联轴器直联传动，补偿位移大，有效避免轴承发热现象；
- 6、锤片刀刃采用合金钢真空溶结，使用寿命长；
- 7、移位全开式操作门，方便检修及更换筛片；

Main features

1. The grinding chamber is of tear-circle shape, effectively eliminating the circular flow in the grinding process and higher capacity;
2. The bottom of grinding chamber is fitted with U-shape double grinding structure, further improving the capacity with evener grinding fineness;
3. One machine for both coarse grinding and fine grinding is realized through adjusting the gap between hammer and screen;
4. Rotor passes accurate dynamic balancing test, resulting in low equipment noise and smooth running;
5. New tyre shape coupling directly-connecting driving results in big offset travel and effectively avoid the heating of bearing;
6. Hammer blade edge is vacuum-welded by alloy steel, resulting in long service life;
7. The moving full-wide operation door facilitates maintenance and replacing of hammer;



叶轮喂料器
Impeller Feeder



滑杆式开门机构
Slide Opening Device



皮带磁选喂料器
Belt Magnet Feeder



连动压筛机构
Screen Pressing Unit

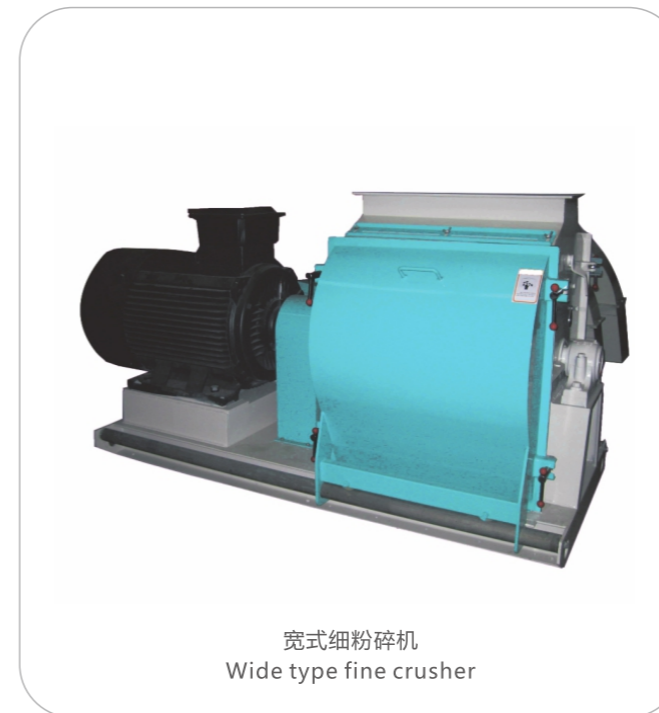
久隆系列粉碎机
Goldlong Series Grinder



SFSP系列水滴型粉碎机
SFSP Series Hammer Mill



SFSP系列锤片式粉碎机
SFSP Series Hammer Mill



宽式细粉碎机
Wide type fine crusher



立轴式微粉碎机
SWFL Vertical shaft fine grinder

SSHJ系列双轴桨叶高效混合机
SSHJ Series Double Shaft High efficiency Mixer



主要特点说明

- 1、低速运转，高效混合，动作柔和，长时间混合不产生偏析，可添加各种液体；
- 2、三排链传机构，传动平稳可靠；混合均匀度高；
- 3、广泛用于畜禽饲料、水产饲料、预混料、添加剂等行业技改更新的最理想产品；
- 4、全电动或气动大开门卸料，物料残留率低，碳钢、不锈钢、复合材料等多种机体可供选择。

Main features

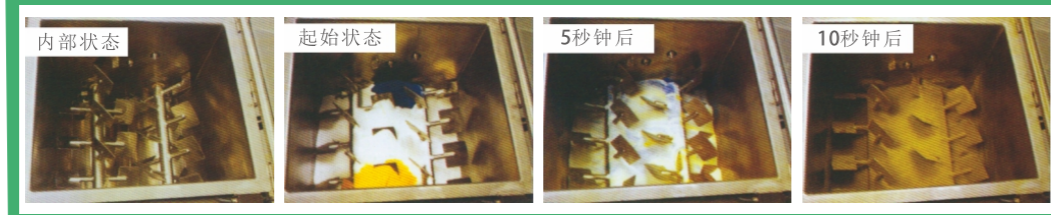
1. With low speed, high efficiency and soft mixing and without segregation;
2. Triple-chain driving structure ensures steady running;
3. With high homogenous degree, and many kinds of liquid can be added;
4. Big discharging door ensures lower residue.



科学合理的桨叶排列



SSHJ高效混合机工作示意图



型号 / Model	SSHJ0.5	SSHJ1	SSHJ2	SSHJ4	SSHJ6
有效容积 / Volume.(m3)	0.5	1	2	4	6
混合量 / Mixing(kg)	250	500	1000	2000	3000
电功率 / Main Power(kw)	5.5	11	18.5	30	45
混合时间 / Time/batch(min)	4-6	4-6	4-6	4-6	4-6
混合均匀度 / Cv(cv%)	≤5	≤5	≤5	≤5	≤5

久隆混合机系列产品
Goldlong Series Mixer



SDHJ系列单轴高效混合机
SDHJ Series Single Shaft Blade Mixer



SDHL系列单轴螺带混合机
SDHL Series Shaft Screw Mixer

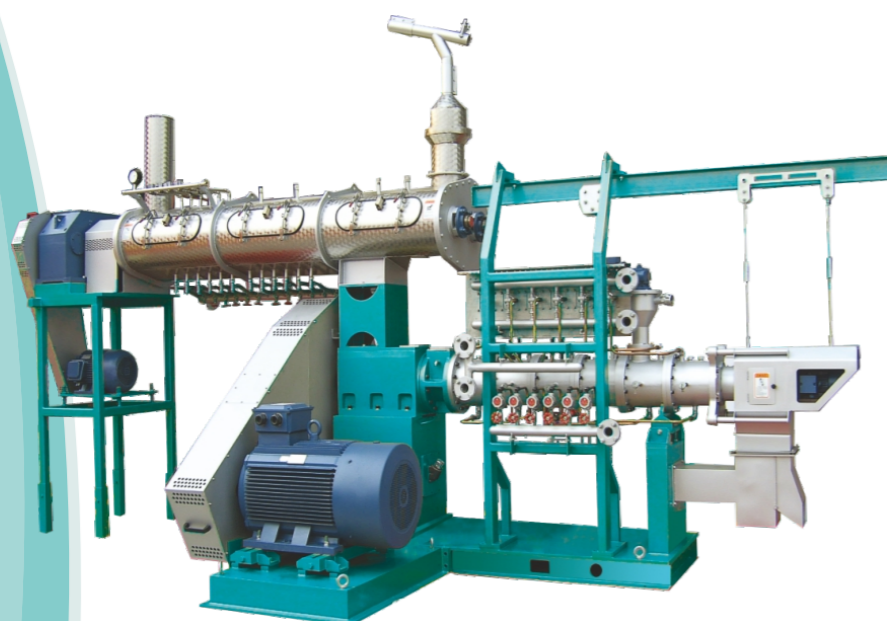


SLHY螺带混合机
SLHY Series Screw Mixer



V型混合机
V-Mixer

SPHS 系列水产膨化机
SPHS Series Feed Extruder



主要特点说明

- 1、双轴差速调质器调质熟化效果特佳，可内加鱼油、卵磷脂、鱼溶浆等；
- 2、可生产浮水性或沉水性各式饲料，产品水中稳定性特佳，肉料比高，颗粒均匀；
- 3、料径 $\phi 1$ - $\phi 12$ mm，虾、鳗、牛蛙、狗、观赏鱼饲料皆可生产；
- 4、选用进口轴承，主轴箱循环润滑装置，保证轴承传动件使用寿命。

Main features

1. Extruder with DDC has good cooking performance, fish oil, lecithin can be added also.
2. This extruder can produce floating feed and sinking feed with high stability, high FCR and even pellet;
3. The feed for shrimp, eel, bull frog, dog and aquarium fish with size from $\phi 1$ mm to $\phi 12$ mm;
4. Imported quality bearing can be chosen, circle lubricant system in main shaft box is adopted to guarantee driving parts life.

主要技术参数/ Technical data

型号 / Model	SPHS165	SPHS215
螺杆直径 / Screw Dia (mm)	165	215
生产能力 / Capacity (t/h)	2.5-5	5-10
主机传动功率 / Main Motor Power (kw)	110-160	220-315
双轴调质器功率 / Conditioner Power (kw)	15/18.5	22
喂料器功率 / Feed Power (kw)	1.5/2.2	1.5/3
切割装置功率 / Cutting Device Power (kw)	4	5.5

久隆水产膨化系列设备
Goldlong Series Feed Extruder



系列卧式环流烘干机
Series Horizontal Circulation Dryer



SWGZ系列稳定干燥组合机
SWGZ Series Stabilizing and Drying Combined Machine



SYPG系列滚筒油脂喷涂机
SYPG Series Roller Liquid Sprayer

SKLN 系列逆流式冷却器
SKLN Series Counter-flow Cooler



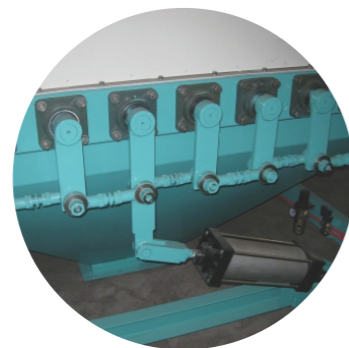
主要特点说明

- 1、采用逆流冷却原理对高温、高湿的颗粒进行冷却，避免了冷风与热料直接接触而产生骤冷现象，因而能防止颗粒产生表面开裂，同时，由于采用闭风器进料，且进风面积大，因而冷却效果显著；
- 2、采用滑阀式或摆式排料机构，运动平稳、可靠，残留小；
- 3、能耗低、操作简便；
- 4、冷却后的成品温度不高于室温+3℃-+5℃。

Main features

1. Cooling air moves in reversed direction of the pellet, so that the pellet can be cooled from the bottom to the top, and the crack in the pellet can be reduced.
2. With good efficiency, material temperature is not over +3℃-+5℃ after cooling.
2. With special coercive discharging system.
3. It can be used in all kinds of raw material.

型号 Model	SKLN2.5	SKLN4	SKLN6	SKLN8	SKLN10
产量 Capacity	3-5T/h	4-8T/h	6-10T/h	8-15T/h	12-20T/h
冷却时间 Cooling time	8-15min				
冷却后料温 Cooled feed temperature	不高于室温+3℃-5℃ not+3℃-5℃ higher than room temperature				



SFJH 系列回转分级筛
SFJH Series Rotary Sifter

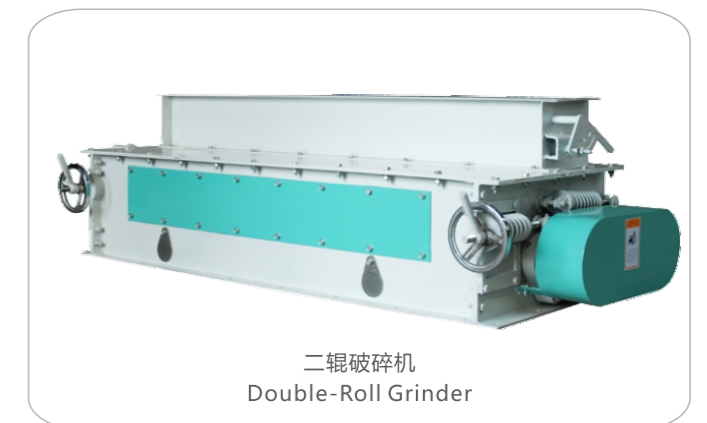
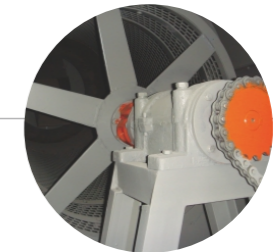
主要特点说明

- 1、适用于颗粒料、破碎料的分级以及一些颗粒、粉碎的清理和分级处理。
- 2、采用带传动形式可按不同筛理要求，配置筛网目数及层数，实现粗料、成品料、粉料分级。
- 3、特殊平衡方式，设计预埋时考虑了传动件的偏心距，高分子尼龙板的弹性力，底板的质量惯性，实现回转时筛理的最佳振幅。

Main features

1. Belt driving system is adopted; according to different requirement, screen layer and mesh can be adjusted;
2. With special balance, polymer nylon board, the best amplitude can be reached during rotary;
3. Screen system is flexible with less trouble and maintenance.

型号(model)	产量(t/h)	动力(kw)
SFJH 80 × 2c	2-6	1.5
SFJH110 × 2c	4-8	2.2
SFJH130 × 2c	8-12	4
SFJH140 × 2c	10-16	5.5
SFJH153 × 2c	12-20	5.5



配套设备
Auxiliary Equipments



TBLMFa方箱圆筒脉冲除尘器
TBLMFa Pulse Filter



TBLMy系列圆筒脉冲除尘器
TBLMy Pulse Filter



TDTG系列斗式提升机
TDTG Series Bucket Elevator



TCXT 系列永磁筒
TCXT Tubular Magnet



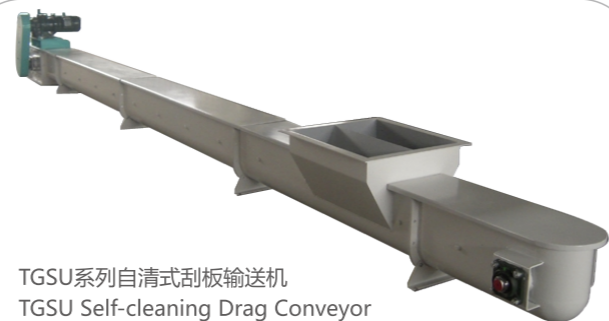
小料振动投料口
Vibrating Feeding Intake



TFPX旋转分配器
TFPX Rotary Distributor



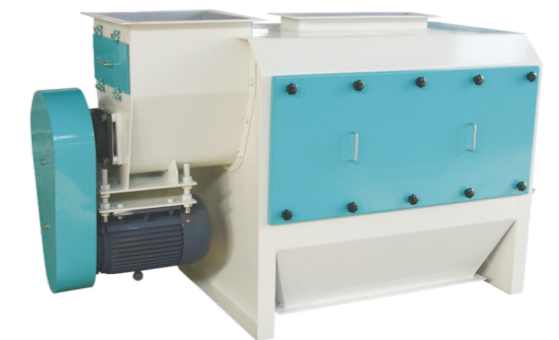
TLSS系列螺旋输送机
TLSS Series Screw Conveyor



TGSU系列自清式刮板输送机
TGSU Self-cleaning Drag Conveyor



气动三通和气动圆三通
TBDQ/TBDQy Series Pneumatic Three-way



清理筛
Precleaner

配套设备
Auxiliary Equipments

饲料成套工程
Turn-key Projects—Feed Plant

饲料成套工程
Turn-key Projects—Feed Plant



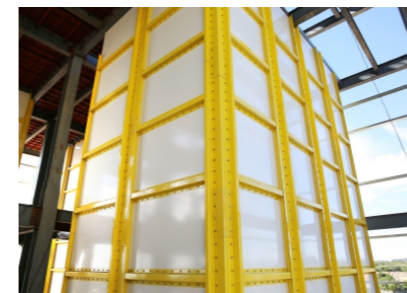
饲料成套工程
Turn-key Projects—Feed Plant

饲料成套工程
Turn-key Projects—Feed Plant



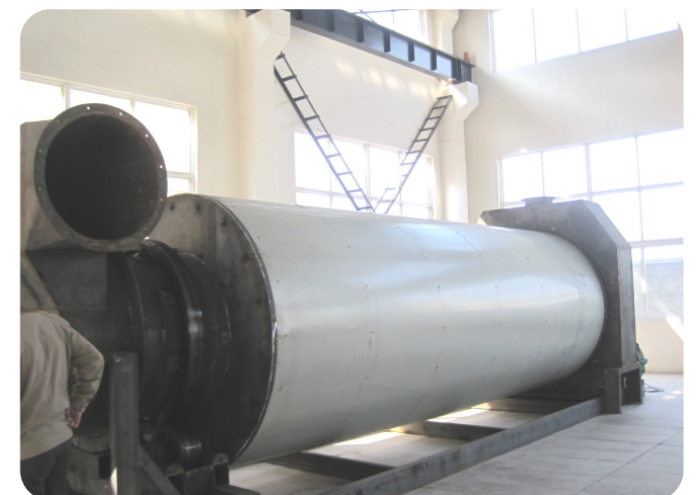
饲料成套工程
Turn-key Projects—Feed Plant

饲料成套工程
Turn-key Projects—Feed Plant

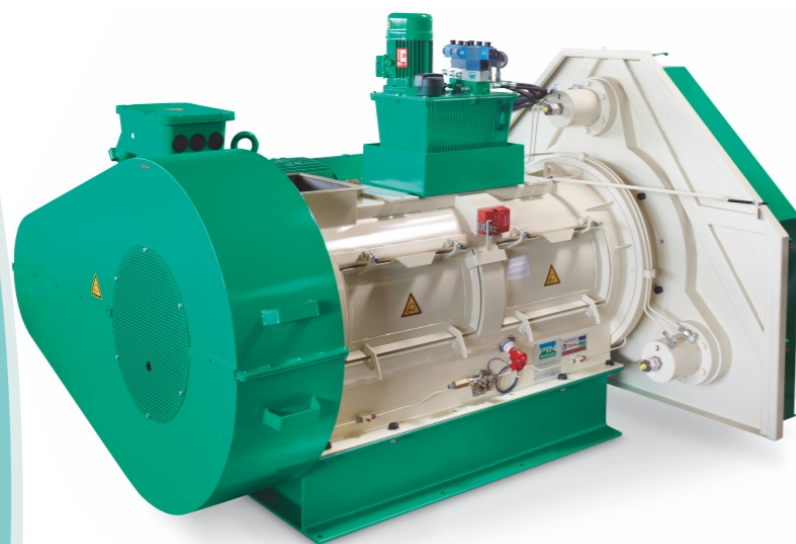


谷物烘干工程
Tower Grain Dryer

生物质工程
The Biomass Engineering



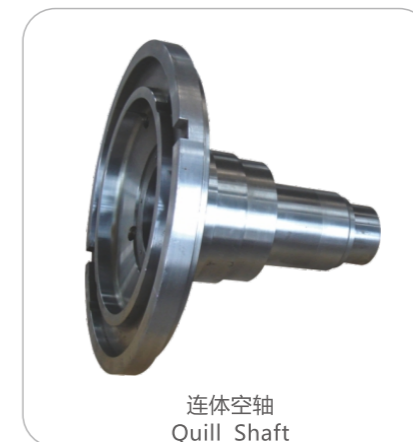
欧洲挤压制粒技术设备在中国
BOA IN CHINA



配件
Ancillary equipment



环模
Die



连体空轴
Quill Shaft



齿轮
Gear



主轴连压板
Main Shaft With Hold Plate



齿轴
Pinion



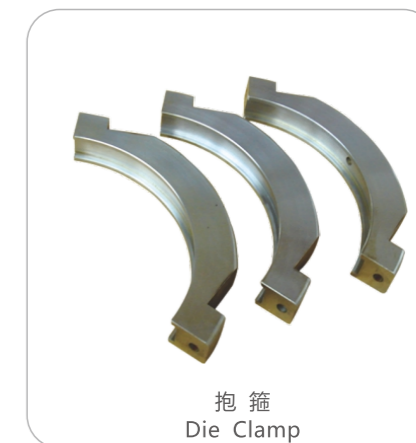
弹性联轴器
Coupling



压辊总成
Roller assembly



压辊
Roller Shell



抱箍
Die Clamp