

# GP-T433

## Fiber Optic Floor Box

### Applications

- The box is designed for providing full splice and perfect fiber management..
- The box is used in building or in the small street cabinet.

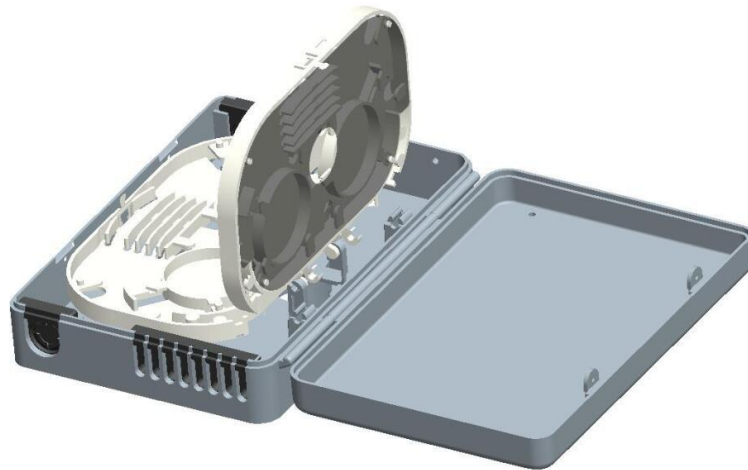


### Specifications

Part No.	GP-T433
Dimension	150 x 108 x 36 mm
Inlet ports and cable dia.(max.)	2 × Ø13 mm
Outlet cable ports and cable dia.(max.)	8 × Ø 4 mm
Splice capacity of each tray	4/8FO
Suitable splitter	Micro PLC splitter 1:4, 1:8
Max. number of tray	2pcs

### Features & Benefits

- 1) Compact structure with full full splice and perfect fiber management.
- 2) The cover with hinge and snap joint which makes it easy installed and uninstalled.
- 3) Operating space divided into two parts for the loop-through cable and pigtail splicing. Easy for its installation and maintenance.
- 4) Micro PLC splitter 1x4 or 1x8 can be applicable in each tray.
- 5) Each tray equipped with a transparent plastic cover to protect the fibers
- 6) Flip design for the splice tray.



### Accessories



Name	Specs	Qty
Splice protection sleeve	L=45 mm	8
Cable ties	100x2.5 mm	16
Metal bolt	M5x35 mm	2
Wall plug		2