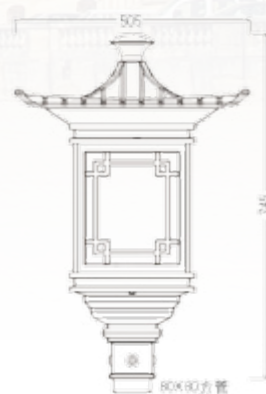




产品说明 Product description

灯具主体结构采用压铸铝材料，表面喷塑处理，耐高温，抗老化。
The main structure of lamps adopt the die casting aluminum material, surface coating processing, high temperature resistant, anti-aging.

细节展示 Detail display



灯杆选型 Selection of lamp pole



ZH-0201-1



ZH-0201-2

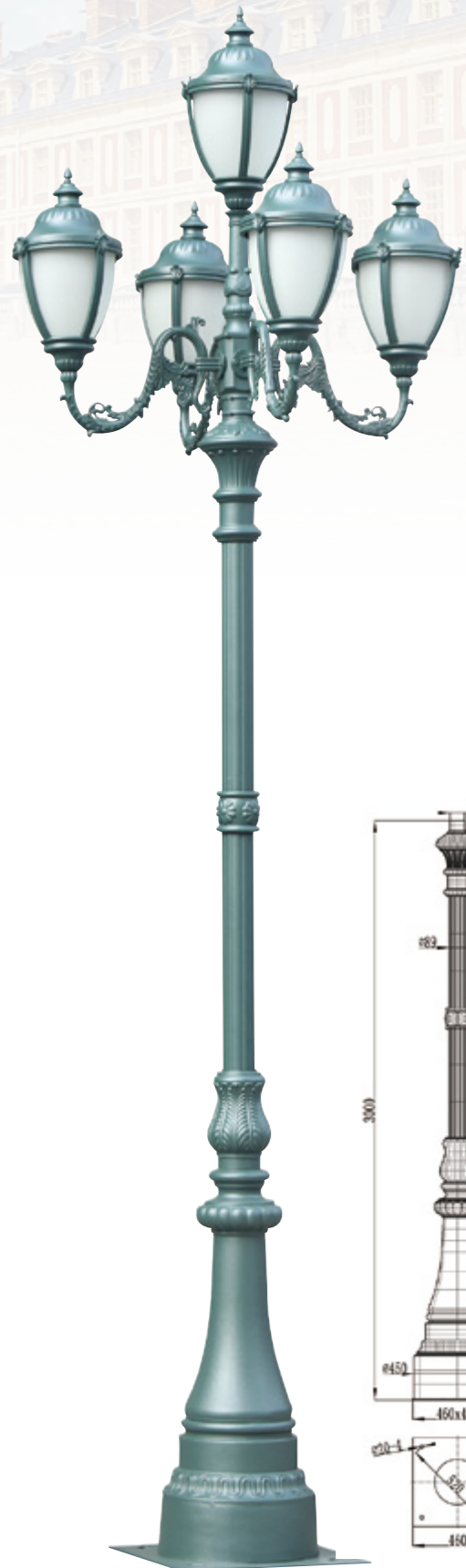


ZH-0201-3



ZH-0201-4





ZH-0401-1

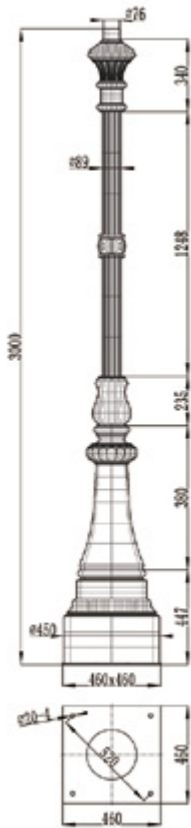
产品说明 Product description

灯具主体结构采用压铸铝材料，表面喷塑处理，耐高温，抗老化。
The main structure of lamps adopt the die casting aluminum material, surface coating processing, high temperature resistant, anti-aging.

细节展示 Detail display



灯杆展示 Light pole display

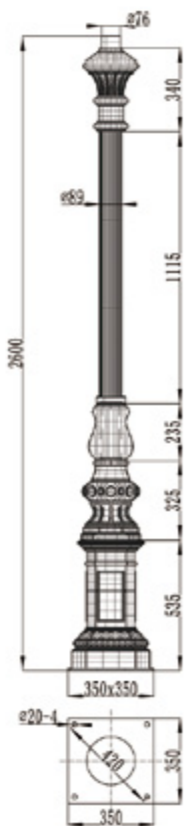


ZH-0401-2





ZH-0601-1



产品说明 Product description

灯具主体结构采用压铸铝材料，表面喷塑处理，耐高温，抗老化。
The main structure of lamps adopt the die casting aluminum material, surface coating processing, high temperature resistant, anti-aging.

细节展示 Detail display



灯头选型 Lamp cap selection



ZH-0601-2



ZH-0601-3





ZH-0801-1

产品说明 Product description

灯具主体结构采用压铸铝材料，表面喷塑处理，耐高温，抗老化。
The main structure of lamps adopt the die casting aluminum material, surface coating processing, high temperature resistant, anti-aging.

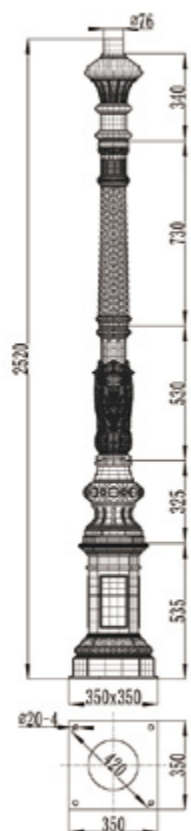
细节展示 Detail display



灯头选型 Lamp cap selection



ZH-0801-2





ZH-1001-1

产品说明 Product description

灯具主体结构采用压铸铝材料，表面喷塑处理，耐高温，抗老化。
The main structure of lamps adopt the die casting aluminum material, surface coating processing, high temperature resistant, anti-aging.

细节展示 Detail display



灯头选型 Lamp cap selection



ZH-1001-2

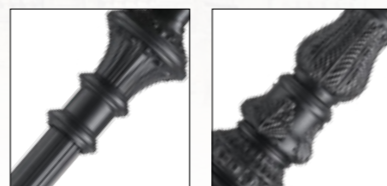
ZH-1001-3



产品说明 Product description

灯具主体结构采用压铸铝材料，表面喷塑处理，耐高温，抗老化。
The main structure of lamps adopt the die casting aluminum material, surface coating processing, high temperature resistant, anti-aging.

细节展示 Detail display



灯头选型 Lamp cap selection



ZH-1201-2

ZH-1201-3



ZH-1201-1





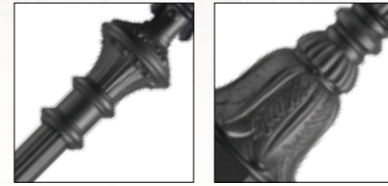
ZH-1401-1



产品说明 Product description

灯具主体结构采用压铸铝材料，表面喷塑处理，耐高温，抗老化。
The main structure of lamps adopt the die casting aluminum material, surface coating processing, high temperature resistant, anti-aging.

细节展示 Detail display



灯头选型 Lamp cap selection



ZH-1401-2

ZH-1401-3



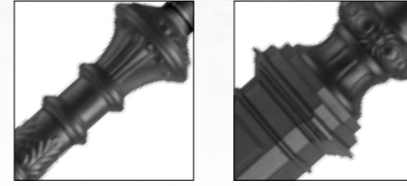


ZH-1601-1

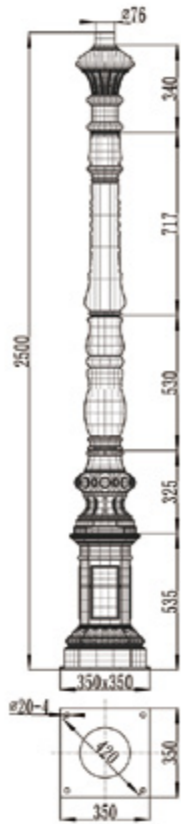
产品说明 Product description

灯具主体结构采用压铸铝材料，表面喷塑处理，耐高温，抗老化。
The main structure of lamps adopt the die casting aluminum material, surface coating processing, high temperature resistant, anti-aging.

细节展示 Detail display



灯头选型 Lamp cap selection



ZH-1601-2



ZH-1601-3



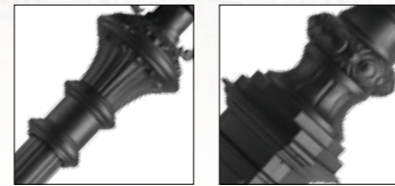


ZH-1801-1

产品说明 Product description

灯具主体结构采用压铸铝材料，表面喷塑处理，耐高温，抗老化。
The main structure of lamps adopt the die casting aluminum material, surface coating processing, high temperature resistant, anti-aging.

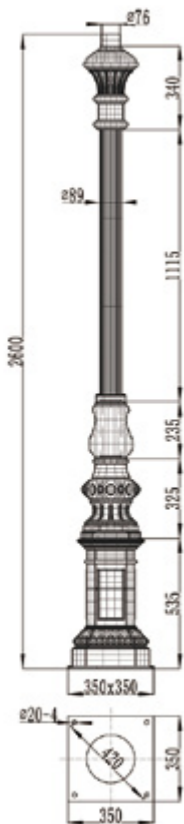
细节展示 Detail display



灯头选型 Lamp cap selection



ZH-1801-2



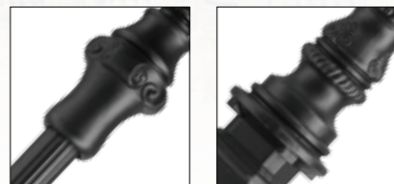


ZH-2001-1

产品说明 Product description

灯具主体结构采用压铸铝材料，表面喷塑处理，耐高温，抗老化。
The main structure of lamps adopt the die casting aluminum material, surface coating processing, high temperature resistant, anti-aging.

细节展示 Detail display



灯头选型 Lamp cap selection



ZH-2001-2



ZH-2001-3





ZH-2201-1

产品说明 Product description

灯具主体结构采用压铸铝材料，表面喷塑处理，耐高温，抗老化。
The main structure of lamps adopt the die casting aluminum material, surface coating processing, high temperature resistant, anti-aging.

细节展示 Detail display



灯头选型 Lamp cap selection



ZH-2201-2

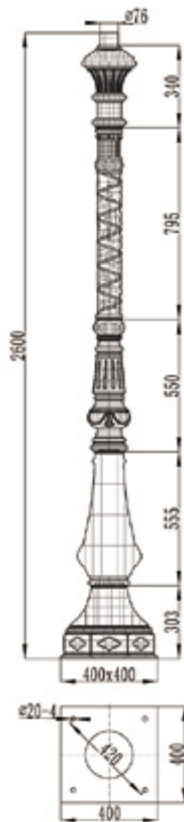


ZH-2201-3





ZH-2401-1



产品说明 Product description

灯具主体结构采用压铸铝材料，表面喷塑处理，耐高温，抗老化。
The main structure of lamps adopt the die casting aluminum material, surface coating processing, high temperature resistant, anti-aging.

细节展示 Detail display



灯头选型 Lamp cap selection



ZH-2401-2



ZH-2401-3





ZH-2601-1

产品说明 Product description

灯具主体结构采用压铸铝材料，表面喷塑处理，耐高温，抗老化。
The main structure of lamps adopt the die casting aluminum material, surface coating processing, high temperature resistant, anti-aging.

细节展示 Detail display



灯头选型 Lamp cap selection



ZH-2601-2

ZH-2601-3

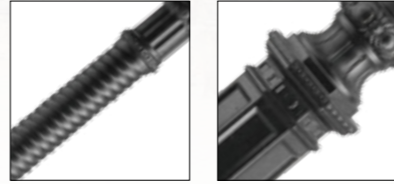




产品说明 Product description

灯具主体结构采用压铸铝材料，表面喷塑处理，耐高温，抗老化。
The main structure of lamps adopt the die casting aluminum material, surface coating processing, high temperature resistant, anti-aging.

细节展示 Detail display



灯头选型 Lamp cap selection

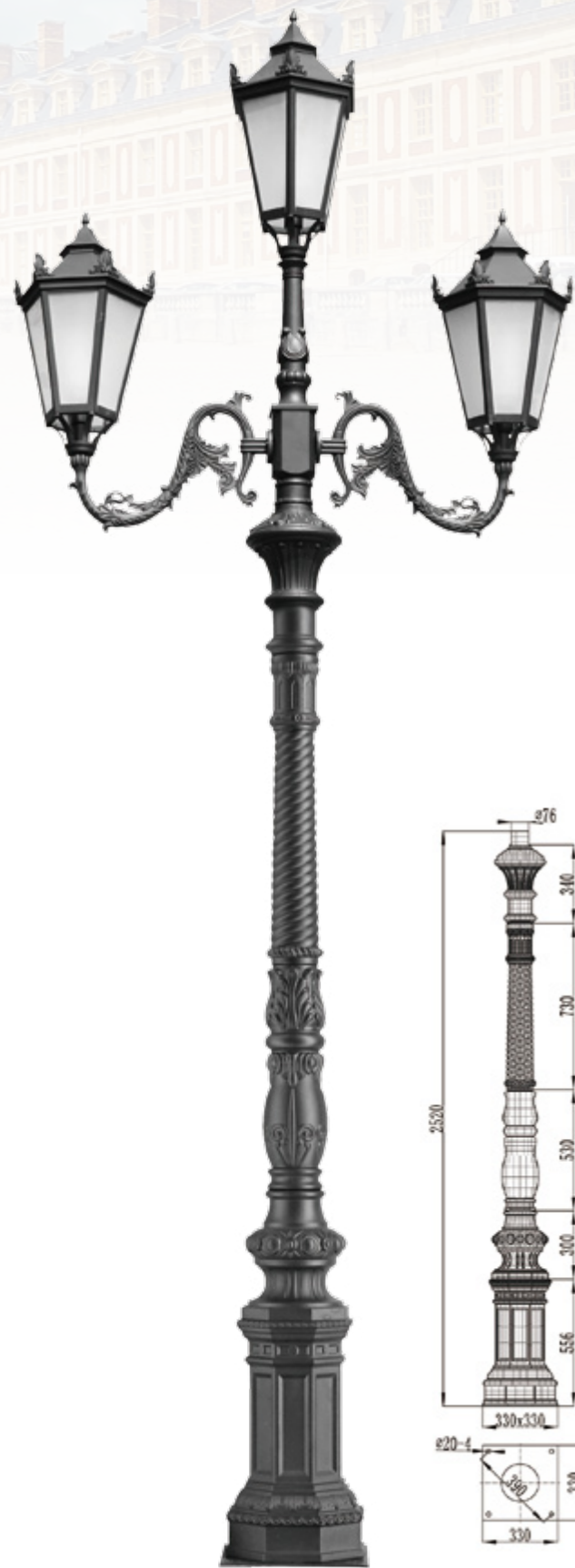


ZH-2801-2

ZH-2801-3

ZH-2801-1





ZH-3001-1

产品说明 Product description

灯具主体结构采用压铸铝材料，表面喷塑处理，耐高温，抗老化。
The main structure of lamps adopt the die casting aluminum material, surface coating processing, high temperature resistant, anti-aging.

细节展示 Detail display



灯头选型 Lamp cap selection



ZH-3001-2

ZH-3001-3





ZH-3201-1

产品说明 Product description

灯具主体结构采用压铸铝材料，表面喷塑处理，耐高温，抗老化。
The main structure of lamps adopt the die casting aluminum material, surface coating processing, high temperature resistant, anti-aging.

细节展示 Detail display



灯头选型 Lamp cap selection



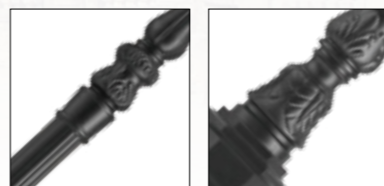
ZH-3201-2



产品说明 Product description

灯具主体结构采用压铸铝材料，表面喷塑处理，耐高温，抗老化。
The main structure of lamps adopt the die casting aluminum material, surface coating processing, high temperature resistant, anti-aging.

细节展示 Detail display



灯头选型 Lamp cap selection



ZH-3401-1

ZH-3401-2



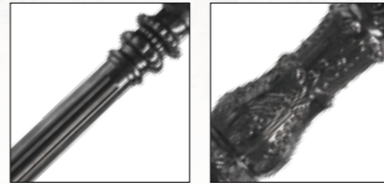


ZH-3601-1

产品说明 Product description

灯具主体结构采用压铸铝材料，表面喷塑处理，耐高温，抗老化。
The main structure of lamps adopt the die casting aluminum material, surface coating processing, high temperature resistant, anti-aging.

细节展示 Detail display



灯头选型 Lamp cap selection

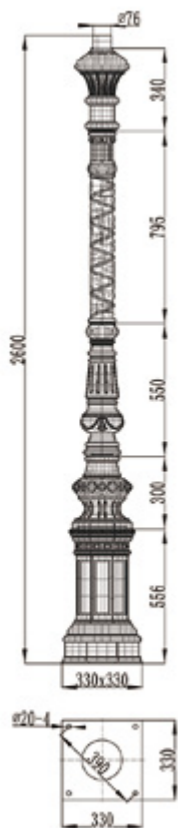


ZH-3601-2





ZH-3801-1



产品说明 Product description

灯具主体结构采用压铸铝材料，表面喷塑处理，耐高温，抗老化。
The main structure of lamps adopt the die casting aluminum material, surface coating processing, high temperature resistant, anti-aging.

细节展示 Detail display



灯头选型 Lamp cap selection



ZH-3801-2





产品说明 Product description

庭院灯系列灯饰是园林景观区、文化休闲娱乐广场、步行街、商业街、住宅小区、行车道两侧等场所普遍使用的装饰及照明光源配置形式。是装饰性照明灯饰产品。灯体材质多样，光源运用灵活多变，结构形态千姿百态，是美化、亮化、绿化有机结合，光与影、灯与艺术的完美结晶。

Lawn lamp lighting is a scenic garden, cultural and recreational square, pedestrian street, commercial street, residential lane on both sides and other places in the widespread use of decoration and illumination light source configuration is decorative lighting products. Light body material diversity, the role of light source flexible, varied structure form is landscaping, lighting, green organic combination, light and shadow, light and art of the perfect crystallization.



ZH-4001

ZH-4002

ZH-4003

ZH-4005

ZH-4004

ZH-4006



ZH-4101

产品说明 Product description

灯具主体结构采用压铸铝材料，表面喷塑处理，耐高温，抗老化。
The main structure of lamps adopt the die casting aluminum material, surface coating processing, high temperature resistant, anti-aging.

细节展示 Detail display

