



Let clients be our brand's spokesperson !
 让客户成为我们品牌的代言人
 Build EI System
 建立EI系统

世界500强塑胶企业选择德玛吉的理由

The reason to be chosen by world top 500 PLASTIK enterprises

- 一站式服务 One-stop Service
- 全球EI系统 Global EI system
- 世界足迹 World track
- 品质宣言 Quality declaration
- 荣誉资质 Qualification honor
- 创新专利 Innovation Patent



为以上塑机品牌提供优质的机械配件-螺杆
 We can provide high quality spare

parts – screw for above plastic machine brand

- 奥地利: 恩格尔Engel
- 瑞士: 耐司特netstal
- 德国: 巴顿菲尔battenfeld, 克罗斯玛菲(KRAUSS-MAFFEI), 德玛格demag, 米拉克郎milacron, 雅宝(arburg),
- 美国: 辛辛那提cincinnati
- 日本: 日精nissei, 日钢jsw, 发那克fanuc, 宇部, 东洋toyo, 东芝toshiba, 川口KAWAGUCHI, 川刚, 三菱mitsubishi, 住友sumitomo, 新潟niigata, 沙迪克(Sodick), 菱屋, 名机(meiki).
- 韩国: 宇进, LG,
- 台湾: 亚塑, 台湾震雄, 台中精, 全力发, 富强鑫, 超群, 华峰, 义展, 舜展, TMC, 群基, 南峰, 今机, 宗伟, 华欣, 精机, 联塑, 台塑,
- 香港: 震雄, 东华, 恒生, 宝源, 亿利达, 业勤, 顺光, 百特灵, 伊姿密, 全盛,
- 中国: 震德, 海天, 华大, 格兰, 博创, 宏大, 王牌, 东方, 涌太, 海泰, 精力, 力马, 宏天, 宏大, 力广, 弘力, 海星, 海鹰, 海达, 涌江, 三顺, 金星, 浙江塑机总厂, 柳塑, 申达, 双马, 三元等。

TOYO TIRES driven to perform

Sumitomo SHI DEMAG

TOSHIBA

CINCINNATI MACHINES

FANUC Robotics

震德

震雄

NISSEI

MEIKI CO.,LTD.

JSW

KraussMaffei

联塑 L&S

HAITIAN PLASTICS MACHINERY

MILACRON Manufacturing Technologies

NIGATA All-Electric Molding Machines

LG

Sodick

Battenfeld Injection Molding SMS group

KABRA Extrusion Technik

KAWAGUCHI

COMPANY PROFILE

公司简介



我公司舟山德玛吉实业有限公司是全国大规模生产螺杆，料筒的专业生产厂家，公司生产规模大，设备精良，工艺科学，制作精良，技术力量雄厚，不但为国内百余家大型塑料机械生产企业进行配套，而且出口印度尼西亚、日本、韩国、印度、俄罗斯、中东、非洲、台湾等国家和地区。

公司本着“为国家节省能源，为同行带动进步，为客户创造利润，为员工提供机会，为企业创造效益，和谐发展共同创造社会繁荣”的宗旨，以原有独特的技术力量，和完善的质量保证体系，拥有自主知识产权的“德玛吉”员工经过不断的努力和瑞典工程师配合研究，在原来的PTA镍合金喷焊技术改进并开发出超长耐磨，超高耐腐蚀的两大品质系列螺杆。在国外，高腐蚀，高填充PVC，板材，管材，片材，型材，木塑，挂壁板等市场，我们独有的品质螺杆，以超耐用使用寿命独占市场雄风。

公司严格通过ISO9001；2000质量管理体系，产品经国内外名牌塑胶企业长时间使用和国家权威测试中心检测并经专家进行逐步考核其各项技术指标达到并超过国家标准。

在新经济，新形势下，公司本着“为国家节省资源，为同行带动进步，为客户创造利润，为员工提供机会，为企业创造效益，和谐发展共同创造社会繁荣”的宗旨，为客户提供更完善的产品，更满意的服务。

Zhoushan DEMAJI Industrial is specialized in the production of series double screw & barrel, with its huge scale production and excellent equipment, technology, science, well made, strong technical force, we not only provide fittings of machines to foreign and national machinery plants, but also undertakes processing according to the samples by fragmentary. We do global sales such as Russia, India, Korea, Turkey, Middle-East and so on. In line with the policy "save resources for the country, enlarge profits for customers, create benefit and harmonious development for social prosperity", DEMAJI staff after continuous efforts and Sweden engineers cooperate with research, in the original PTA nickel alloy spray welding technology improvement and the development of a long wear-resisting, high corrosion resistance of the two big quality series screw. In a foreign country, high corrosion, high fill PVC, sheet, pipe, sheet material, profiles, wood and plastic, hang wall board, etc, the quality of our exclusive market screw to super durable service life corner the market Wells. The company strictly through ISO9001; 2000 quality management system, the product after the famous at home and abroad for a long time and use plastic enterprise national authority test center and the detection experts gradually assess its technical indexes to attain and more than the international standard.



认证编码 谨防假冒



ISO9001国际品质认证
质量管理体系符合
GBT9001-2000 和ISO9001-2000标准

目录 Contents



材料应用与机械性能	Material application and mechanical property	01-04	
特殊材料开发应用领域	Application development for Special Material	05-08	
注塑机螺杆	Screw for injection molding machine	09-12	
挤出机螺杆	Screw & Barrel for single screw extruder	13-16	
锥形双螺杆	Conical twin screw & barrel	17-20	
平行双螺杆	Parallel twin screw & barrel	21-24	
橡胶螺杆	Rubber screw	25	
行星螺杆、机筒	Planetary screw barrel	26	
齿轮箱系列	Gearboxes series	27-28	
加热器	Heater spare parts	29-30	
合金螺筒系列	The bimetallic screw and barrel	31-36	
车间生产现场	Workshop -production -filed	37-38	



落料
Blanking

精加工
Rough
Machining

调研
Quenching And Tempering

半精加工
Semi Finishing Machining

精加工
Finish Machining

氮化或双合金处理
Nitriding or pair of Alloys Are Processed

检测
Detecting

成品
Finished Product

Grade	化学成分(%)Chemical composition in%										其它 Others	标准/Standards	退火后硬度 Hardness after annealing	淬火温度 Hardening temperature°C	冷却介质 QYEBGABT°C	可得硬度HRC btainable hardness HRC
	C	Cr	Mo	Ni	V	W	Co	Si	Mn	DIN/EN						
S500	1.10	3.85	9.20	-	1.00	1.35	7.75	-	-	-	1.3427 HS2-10-1-8	M42	最大 Max.280HB	1170-1210°C	油,真空,盐浴(500-550°C)Oil,Vacuum,Salt bath(500-550°C)	67-69HRC
S600	0.91	4.05	5.00	-	1.75	6.20	-	-	-	-	1.3343,HS6-5-2-1.3554LW	~M2 reg.C	最大 Max.280HB	1190-1230°C	油,真空,盐浴(500-550°C)Oil,Vacuum,Salt bath(500-550°C)	64-66HRC
S705	0.92	4.05	4.95	-	1.85	6.20	4.75	-	-	-	1.34243 HS6-5-2-5	~M41	最大 Max.280HB	1190-1230°C	油,真空,盐浴(500-550°C)Salt bath,Gas	64-66HRC
S290	2.01	3.75	2.45	-	5.05	14.30	11.00	-	-	-	-	-	最大 Max.350HB	1150-1210°C salt bath,1150-1190°C vacuum	盐浴,气体(500-550°C)Oil,Vacuum,Salt bath(500-550°C)	66-70HRC
S390	1.64	4.75	2.00	-	4.80	10.40	7.98	-	-	-	-	-	最大 Max.300HB	1150-1230°C	油,真空,盐浴(500-550°C)Salt bath,Gas	65-69HRC
S590	1.29	4.20	5.00	-	3.03	6.33	8.40	-	-	-	1.3244 HS6-53-8	-	最大 Max.300HB	1075-1180°C	油,真空,盐浴(500-550°C)Salt bath,Gas	65-67HRC
S690	1.35	4.13	5.00	-	4.13	5.88	-	-	-	-	~1.3351-~HS6-5-4	~M4	最大 Max.280HB 最大 Max.280HB	1150-1200°C 1050-1180°C	油,真空,盐浴(500-550°C)Salt bath,Gas	64-66HRC
S790	1.29	4.20	4.98	-	3.03	6.33	-	-	-	-	1.3345 HS6-5-3C	~M3Cl.2			油,真空,盐浴(500-550°C)Salt bath,Gas	

Grade	化学成分(%)Chemical composition in%										其它 Others	标准/Standards	退火后硬度 Hardness after annealing	淬火温度 Hardening temperature°C	冷却介质 QYEBGABT°C	可得硬度HRC btainable hardness HRC	回火后平均洛氏硬度 Aver.Rockwell C hardness after temp. at°C					
	C	Cr	Mo	Ni	V	W	Co	Si	Mn	DIN/EN							AISI	400	500	550	600	650
V300	0.38	5.00	1.30	-	0.40	-	-	1.05	0.40	-	1.2343 X38CrMoV5-1	H11	205HB	1000-1040°C	油,盐浴,空气,真空,Oil,,Salt bath/Air, Vacuum(500-550°C)	52-56HRC 50-64HRC	53	54	52	48	38	30
V302	0.39	5.15	1.38	-	0.95	-	-	1.05	0.40	-	1.2344 X40CrMoV5-1	H13	205HB	1020-1080°C	油,盐浴,空气,真空,Oil,,Salt bath/Air, Vacuum(500-550°C)	52-56HRC 50-64HRC	54	55	54	50	40	32
W303	0.38	5.00	2.80	-	0.55	-	-	0.40	0.40	-	1.2367 X38CrMoV5-3	-	205HB	1030-1080°C	油,盐浴,空气,真空,Oil,,Salt bath/Air, Vacuum(500-550°C)	52-56HRC 50-64HRC	52	54	53	50	44	35
W350	0.38	5.00	1.75	-	0.55	-	-	0.20	0.55	N	-	-	205HB	1010-1020°C	油,盐浴,空气,真空,Oil,,Salt bath/Air, Vacuum(500-550°C)	52-54HRC 52-54HRCC	52	53	53	47	45(620°C)	-
W360	0.50	4.50	3.00	-	0.60	-	-	0.20	0.25	-	-	-	205HB	approx.1050°C	油,盐浴,空气,真空,Oil,,Salt bath/Air, Vacuum(500-550°C)	52-57HRC 推荐recommended	见回火曲线图 See tempering chart					
W400	0.38	5.05	1.30	-	0.50	-	-	0.20	0.32	-	~1.2343~x37CrMoV5-1	~H11~	205HB	980-990°C	油,盐浴,空气,真空,Oil,,Salt bath/Air, Vacuum(500-550°C)	52-54HRC 50-53HRCC	53	54	52	48	38	30
W403	0.38	5.00	2.80	-	0.65	-	-	0.20	0.25	-	~1.2367~X38CrMoV5-3	-	205HB	1020-1030°C		52-54HRC 50-53HRCC	52	54	53	50	44	35



材料应用与机械性能

冷作钢 Cold work tool steels	Grade	化学成分(%)Chemical composition in%									其它 Others	标准/Standards		退火后硬度 Hardness after annealing	淬火温度 Hardening temperature°C	冷却介质 QYEBGABT°C	可得硬度HRC btainable hardness HRC	回火后平均洛氏硬度 Aver.Rockwell C hardness after temp. at°C						
		C	Cr	Mo	Ni	V	W	Co	Si	Mn		DIN/EN	AISI					100	200	300	400	500	520	550
		K107	2.10	11.50	-	-	-	0.70	-	0.25		0.38	-					1.2436 X210 CrW12	(~D6)	最大 Max.205HB	950-980°C	油,盐浴,空气,真空,Oil,,Salt bath/Air, Vacuum(500-550°C)	64-66HRC	65
K110	1.55	11.25	0.75	-	0.75	-	-	0.30	0.30	-	1.2379 X155CrVMo12-1	D2	最大 Max.205HB	1020-1040°C	油,盐浴,空气,真空,Oil,,Salt bath/Air, Vacuum(500-550°C)	63-65HRC	63	61	59	58	-	-	-	
K340	1.10	8.25	2.10	-	0.50	-	-	0.90	0.40	+Al+Nb	-	-	最大 Max.205HB	1040-1080°C	油,盐浴,空气,真空,Oil,,Salt bath/Air, Vacuum(500-550°C)	61-63HRC	见回火曲线图 See tempering chart							
K350	0.82	8.00	1.60	-	0.60	-	-	0.70	0.40	Al	-	-	最大 Max.205HB	1030-1060°C	油,盐浴,真空,Oil,,Salt bath, Vacuum(500-550°C)	57-62HRCC	59(530°C)	58(540°C)	56	-	-	-	-	
K390	2.47	4.23	3.80	0.21	9.00	1.00	2.00	0.55	0.42	-	-	-	最大 Max.205HB	1030-1080°C	油,真空,Oil, Vacuum	62-66HRC	见回火曲线图 See tempering chart							
K455	0.63	1.05	-	-	0.18	1.95	-	0.60	0.30	-	1.2550 60WCrV7	~S1	最大 Max.205HB	870-900°C	油,Oil	58-62HRC	60	59	56	53	-	-	-	
K460	0.95	0.55	-	-	0.10	0.55	-	0.25	1.10	-	1.2510 100MnCrW4	01	最大 Max.205HB	780-820°C	油,盐浴,Oil,,Salt bath,(200-250°C)	63-65HRC	64	62	58	52	-	-	-	
K490	1.40	6.40	1.50	-	3.70	3.50	-	-	-	+Nb	-	-	最大 Max.205HB	1030-1080°C	油,盐浴,真空,Oil,,Salt bath, Vacuum	58-64HRC	62(540°C)	61	60(560°C)	57(570°C)	55(580°C)	-	-	
K890	0.85	4.35	2.80	-	2.10	2.55	4.50	0.55	0.40	-	-	-	最大 Max.205HB	1030-1180°C	油,真空,Oil, Vacuum	58-64HRC	见回火曲线图 See tempering chart							

塑料模具钢 Plastic mould steels	Grade	化学成分(%)Chemical composition in%									其它 Others	标准/Standards		退火后硬度 Hardness after annealing	淬火温度 Hardening temperature°C	冷却介质 QYEBGABT°C	回火温度 Tempering temperature°C	可得硬度HRC btainable hardness HRC
		C	Cr	Mo	Ni	V	W	Co	Si	Mn		DIN/EN	AISI					
		M238	0.38	1.95	0.20	1.10	-	-	-	0.30		1.45	-					
M268	0.38	2.00	0.20	1.10	-	-	-	0.50	1.50	-	1.2738	P20+Ni	355-395HB	840-860°C 860-880°C	油 (预硬钢不建重新淬火)	-	~38-42HRC	
M300	0.38	16.00	0.65	0.80	-	-	-	0.40	0.80	-	~1.2316-X42CrMo17	-	预硬至290-330HB	840-860°C	油 (预硬钢不建重新淬火)	-	~30-35HRC	
M303	0.28	14.45	0.95	0.85	-	-	-	0.25	0.65	+N	-	-	预硬至290-330HB Prehardened290-390HB	-	-	-	~30-35HRC	
M310	0.38	14.45	-	-	0.20	-	-	0.70	0.43	-	~1.2083-x42Cr13	~420	最大 Max.200HB	1000-1050°C	气体, 盐浴, 油 Gas,Salt ath,Oil	150-300/520-600°C	~48-52HRC	
M315	0.045	12.60	-	-	-	-	-	0.30	0.93	S=0.10 Cu=0.40	-	-	预硬至290-330HB Prehardened290-390HB	-	-	-	~30-35HRC	
M333	0.24	13.25	+	+	+	-	-	0.30	0.30	+N	-	-	最大 Max.220HB	980-1000°C	气体, 盐浴, 油 Gas,Salt ath,Oil	150-300/520-600°C	~48-52HRC	
M340	0.54	17.25	1.13	-	0.10	-	-	0.43	0.40	+N	-	-	最大 Max.260HB	980-1000°C	气体, 盐浴, 油 Gas,Salt ath,Oil	150-300/520-600°C	~53-58HRC	
M368	0.54	17.30	1.10	-	0.10	-	-	0.45	0.40	+N	-	-	最大 Max.280HB	980-1000°C	气体, 盐浴, 油 Gas,Salt ath,Oil	150-300/520-600°C	~53-58HRC	
M390	1.91	20.00	1.00	-	4.00	0.60	-	0.60	0.30	-	-	-	最大 Max.280HB	1100-1180°C	气体, 盐浴, 油 Gas,Salt ath,Oil	150-300/520-600°C	~58-60HRC	



材料应用与机械性能

- 粉末合金钢材
Posder metallurgical steels
- 真空重熔钢材
Special materials subjected to vacuum refining or melting during at least one stage of manufacture
- 塑料模具钢 (电渣重熔级别)
Plastic mould steels in ESR quality
- 冷作工具钢 (电渣重熔级别)
Cold work tool steels in ESR quality
- 高速钢 (电渣重熔级别)
High speed steels in ESR quality
- 热作钢 (电渣重熔级别)
Hot work tools steels in ESR quality with special heat treatment
- 热作工具钢 (传统冶炼)
Hot work tools steels in conventional quality with special heat treatment
- 特殊钢 (电渣重熔级别) 注: 不包括真空重熔
Special materials in ESR quality (exculding vacuum remelted)
- 特殊性能和/或其它性能
Special property and / or achievement characteristics



● 使用寿命提高2-5倍
Increase 2-5times of the life span

特殊材料开发应用领域

粉末合金钢材
Posder metallurgical steels

真空重熔钢材
Special materials subjected to vacuum refining or melting during at least one stage of manufacture

塑料模具钢 (电渣重熔级别)
Plastic mould steels in ESR quality

冷作工具钢 (电渣重熔级别)
Cold work tool steels in ESR quality

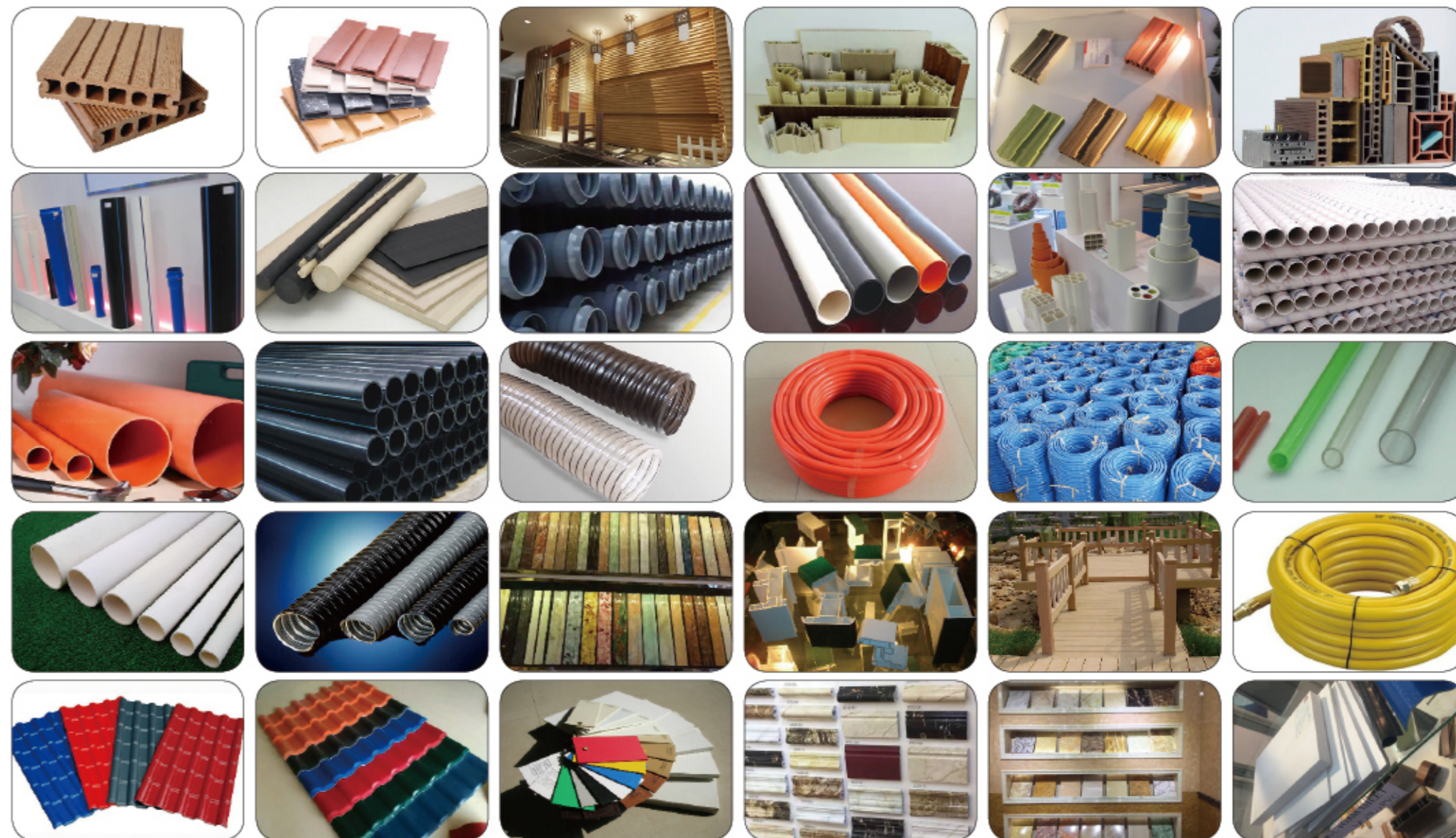
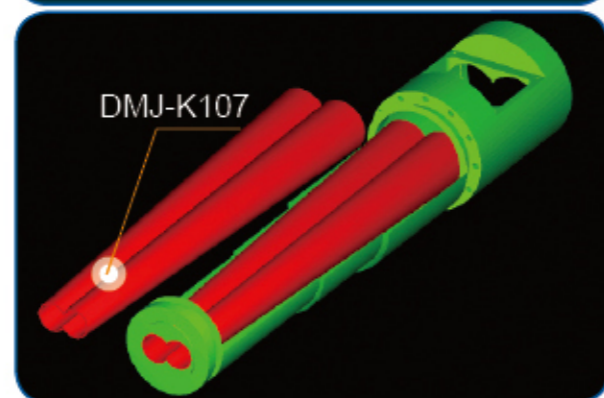
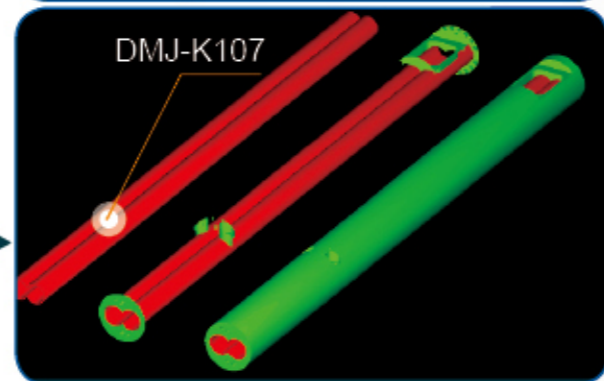
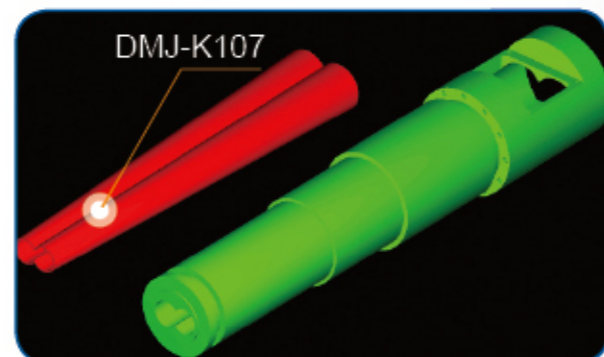
高速钢 (电渣重熔级别)
High speed steels in ESR quality

热作钢 (电渣重熔级别)
Hot work tools steels in ESR quality with special heat treatment

热作工具钢 (传统冶炼)
Hot work tools steels in conventional quality with special heat treatment

特殊钢 (电渣重熔级别) 注: 不包括真空重熔
Special materials in ESR quality (exculding vacuum remelted)

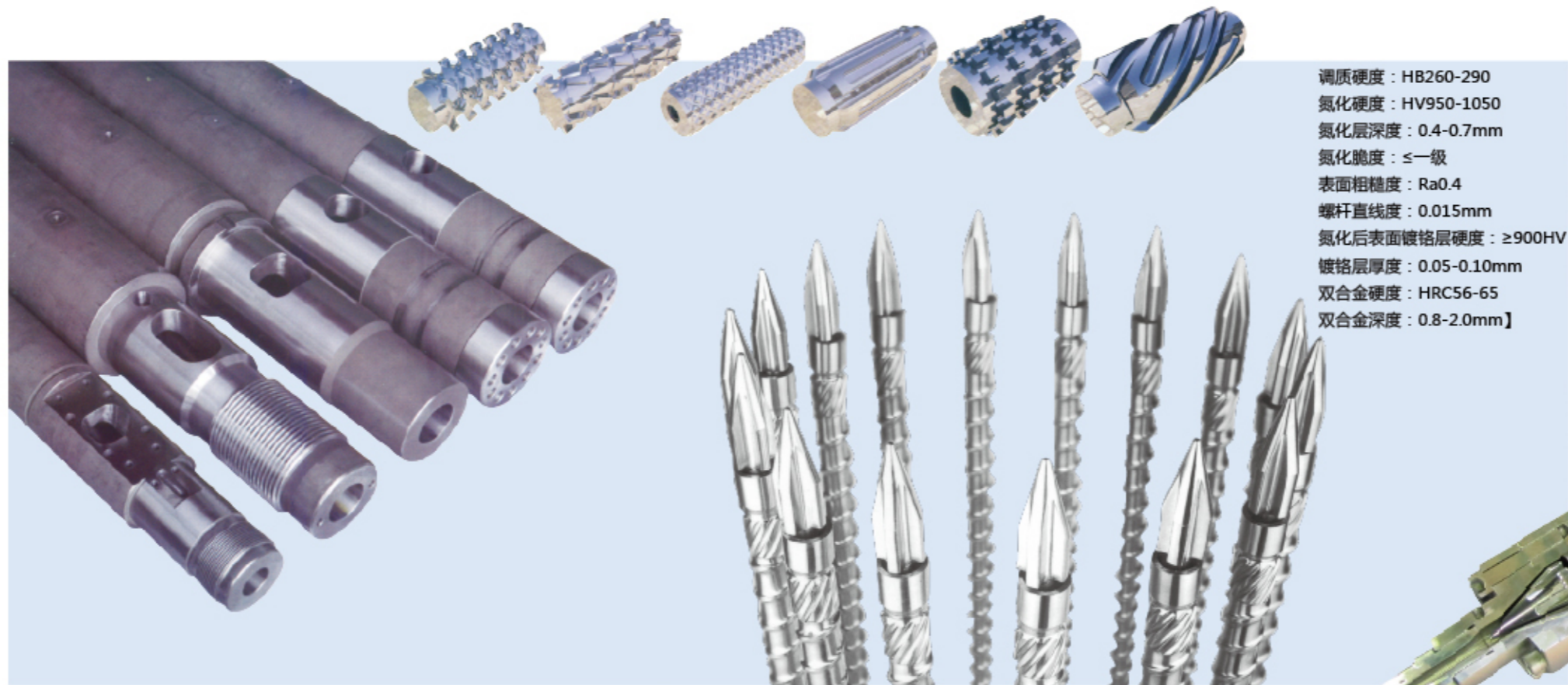
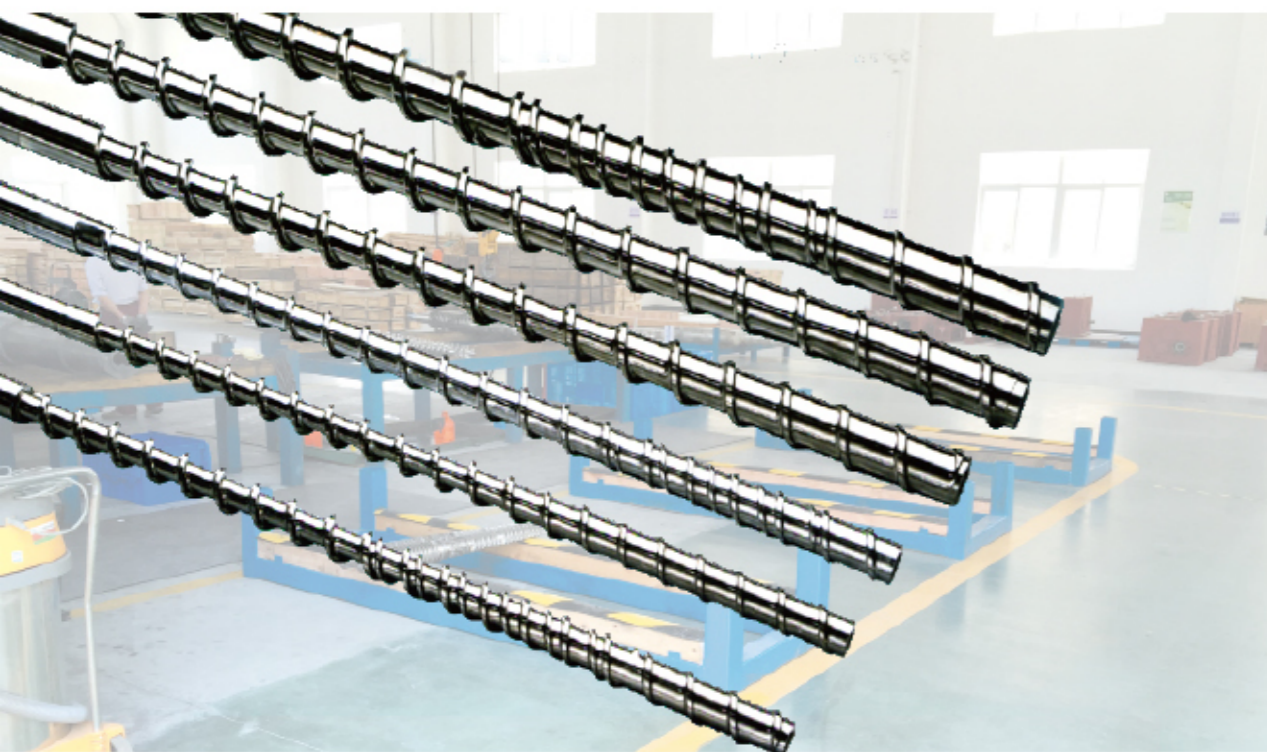
特殊性能和/或其它性能
Special property and / or achievement characteristics



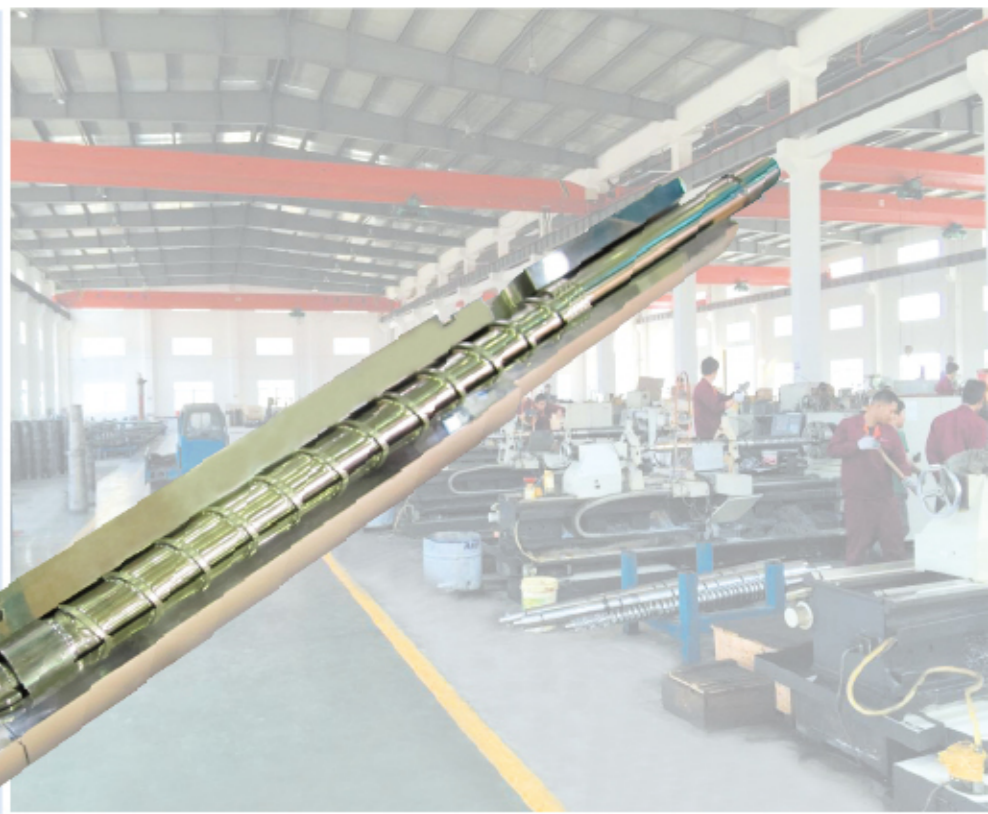
● 使用寿命提高2-5倍
Increase 2-5times of the life span

特殊材料开发应用领域

Screw for injection molding machine



调质硬度：HB260-290
氮化硬度：HV950-1050
氮化层深度：0.4-0.7mm
氮化脆度：≤一级
表面粗糙度：Ra0.4
螺杆直线度：0.015mm
氮化后表面镀铬层硬度：≥900HV
镀铬层厚度：0.05-0.10mm
双合金硬度：HRC56-65
双合金深度：0.8-2.0mm]



25-38000KN锁模力
30克-50000克射胶量
25-38000KN clamping force
30g-50000g injection unit



注塑机螺杆



螺筒使用材料 Screw&barrel use material

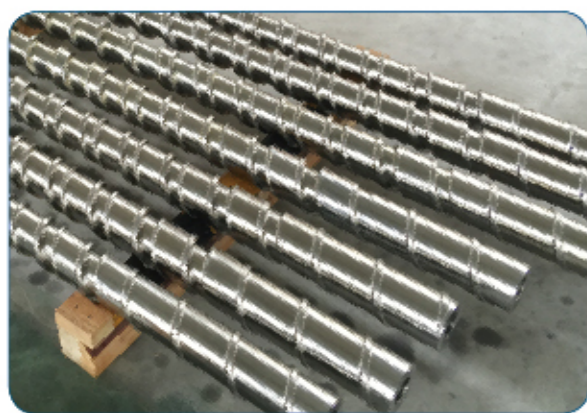
1. 材质: 38CrMoAl A
氮化处理, 表面硬度: HV≥900
氮化层深度: 0.5-0.8mm
2. 材质: 特种合金钢,
经过真空淬火等热处理工艺, 能大大提高三小件的使用寿命。
3. 材质: 表面碳化钨超音整体喷焊, 提高螺杆的耐磨性。

1. Material: 38CrMoAl A
Nitriding treatment. Surface hardness: HV≥900
Nitriding depth: 0.5-0.8mm
2. Material: Special stainless steel
Vacuum quenching treatment, prolong life of parts.



规格参数 Specification parameter

理论注身量 (g) Amount of injection	螺杆直径 x 长度 (mm) screw diameter x length	料筒外径 x 长度 (mm) barrel diameter x length	理论注身量 (g) Amount of injection	螺杆直径 x 长度 (mm) screw diameter x length	料筒外径 x 长度 (mm) barrel diameter x length
30-90	Φ30x900	Φ85x860	800-1250	Φ75x1825	Φ170x1725
60-125	Φ35x910	Φ85x860	1000-1500	Φ80x2000	Φ180x1805
100-150	Φ38x935	Φ95x900	1250-2000	Φ85x2300	Φ190x1900
125-160	Φ40x980	Φ95x910	2000-3000	Φ90x2700	Φ210x2000
125-300	Φ42x1030	Φ105x1880	2500-5000	Φ100x2600	Φ230x2405
250-400	Φ45x1210	Φ115x1165	3000-6000	Φ110x2600	Φ256x2590
300-500	Φ50x1300	Φ125x1260	4000-10000	Φ120x2800	Φ256x2800
450-600	Φ55x1335	Φ130x1320	6000-8000	Φ130x3010	Φ256x2970
500-700	Φ56x1350	Φ130x1350	8000-10000	Φ145x3010	Φ256x3200
500-700	Φ60x1380	Φ140x1350	10000-15000	Φ160x3500	Φ270x3200
650-800	Φ65x1415	Φ150x1420	13000-25000	Φ170x3415	Φ317x3380
700-1000	Φ70x1790	Φ160x1685			



Screw & Barrel for single screw extruder

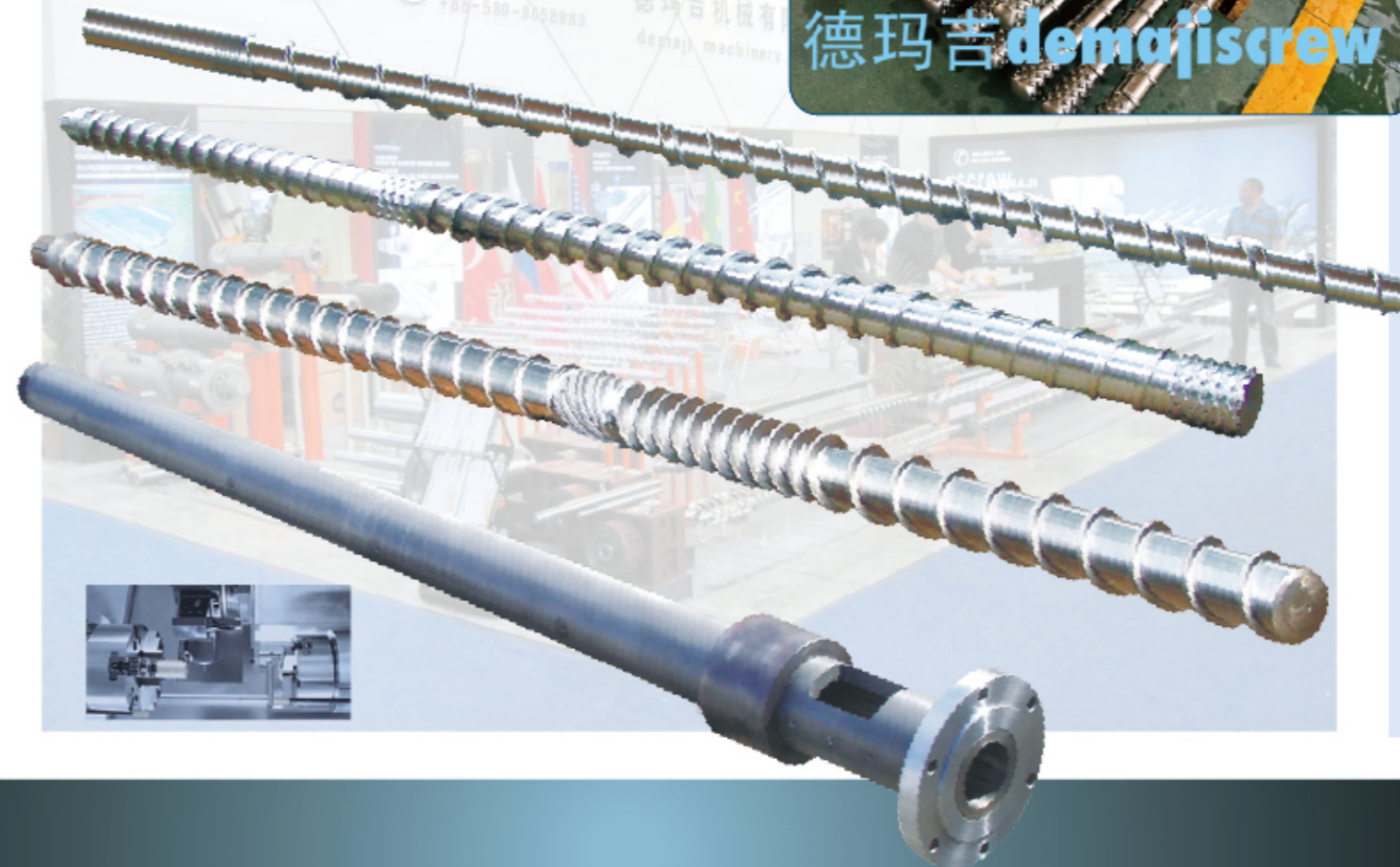
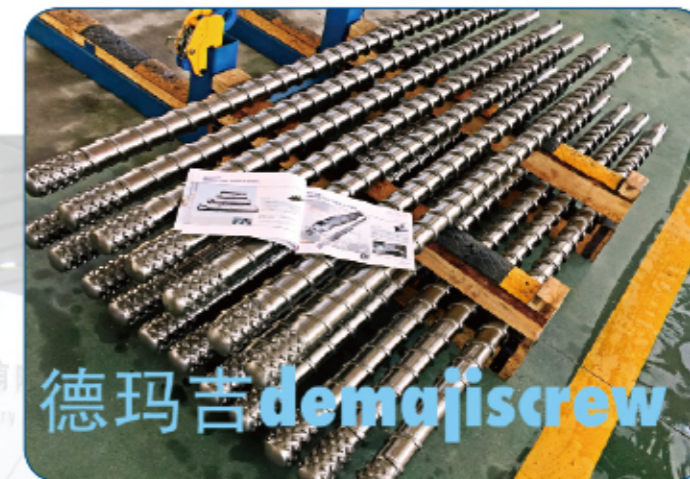
调质硬度：HB260-290
 氮化硬度：HV950-1050
 氮化层深度：0.4-0.7mm
 氮化脆度：≤一级
 表面粗糙度：Ra0.4

螺杆直线度：0.015mm
 氮化后表面镀铬层硬度：≥900HV
 镀铬层厚度：0.05-0.10mm
 双合金硬度：HRC56-65
 双合金深度：0.8-2.0mm



规格：Φ15-Φ360MM
 长径比：L/D=12-45
 螺杆种类：

[不同的塑料物性，可以选择不同结构的螺杆，更能提高塑化效果]
 渐变型、突变型、波浪型、屏障型、双屏障型、分流型、分离型、排气型、销钉型、混合型、双头型、三头型、多头型等。适用塑料：PA、PP、PC、PE、ABS、AS、PS、PVC、PMMA、LCP、PBT、PET、PPC、PPS、PAR、PO、磁粉、陶瓷粉、铝镁粉、铁粉、电木粉等工程塑料。



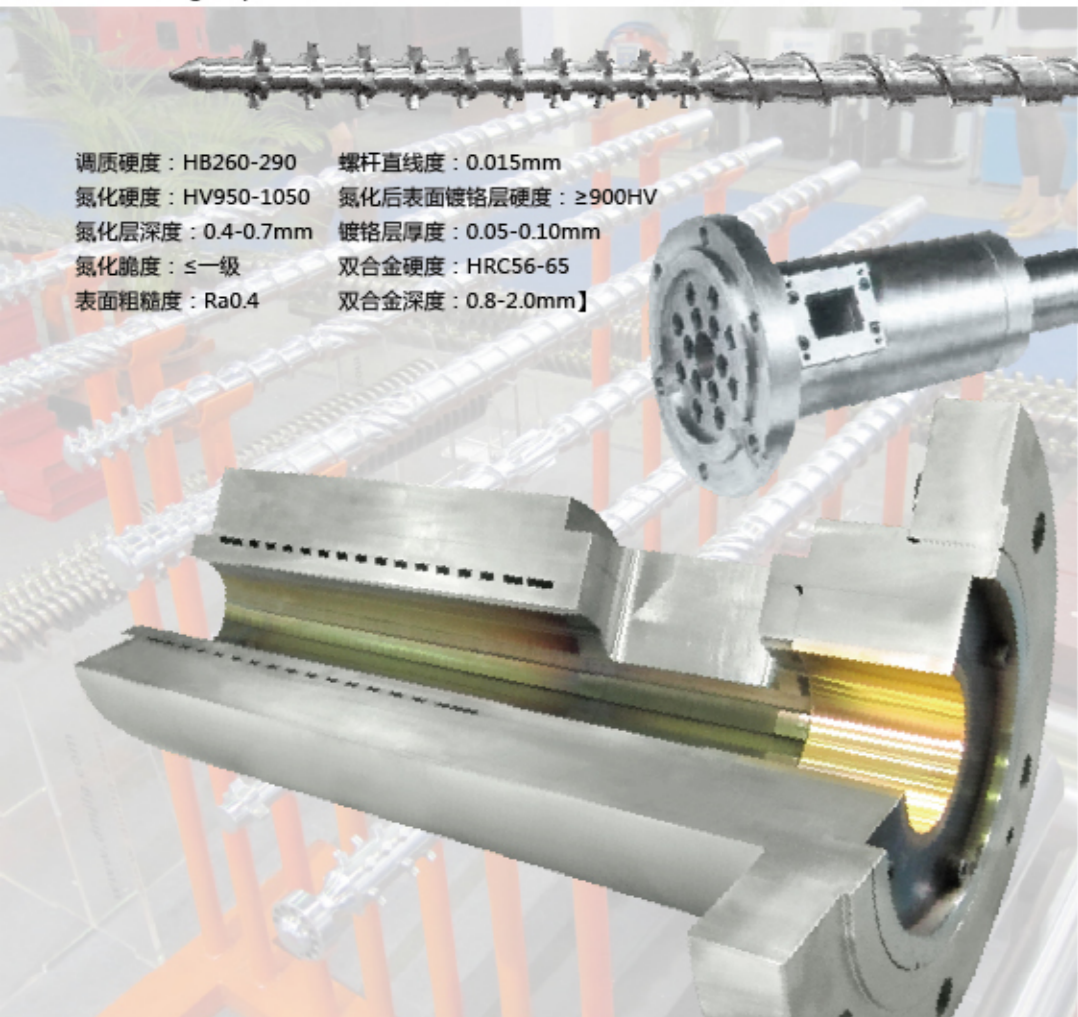
挤出机螺杆

Screw & Barrel for single screw extruder

PP、PE高速螺杆
PP/PE high speed screw

调质硬度：HB260-290
氮化硬度：HV950-1050
氮化层深度：0.4-0.7mm
氮化脆度：≤一级
表面粗糙度：Ra0.4

螺杆直线度：0.015mm
氮化后表面镀铬层硬度：≥900HV
镀铬层厚度：0.05-0.10mm
双合金硬度：HRC56-65
双合金深度：0.8-2.0mm



真空排气螺杆 vacuum vented screw



For good plasticizing effect, we have different design of screw barrel to meet customer's demand. Gradual type, mutant type, wave type, barrier type, double screen type, shunt type, separation type, exhaust type, pin type, mixed type, double-head type, three-head type, multi head type etc.

技术参数 Technical parameter

型号 model	长径比 L/D	产量 (kg/h) output capacity	螺杆转速(rpm) screw rotation speed	驱动功率(kw) driving motor	中心高(mm) Center heigh
DMJ20	20:1	3-5	10-60	1.1/1.5/2.2	1000-1400
DMJZS25	25:1	5-8	10-60	2.2/3.0/4.0	1000-1400
DMJ30	25:1	5-10	10-60	2.2/3.0/4.0	1000-1400
DMJ45	25-36:1	10-120	10-150	5.5-22	1000-1400
DMJ65	25-36:1	60-300	20-150	22-75	1000
DMJ75	25-36:1	200-450	20-150	30-132	1000
DMJ90	25-36:1	180-600	20-110	30-185	1000-1100
DMJ120	25-36:1	320-1000	20-90	75-280	1000-1250
DMJ150	25-36:1	400-1300	20-75	90-400	1000-1300



挤出机螺杆

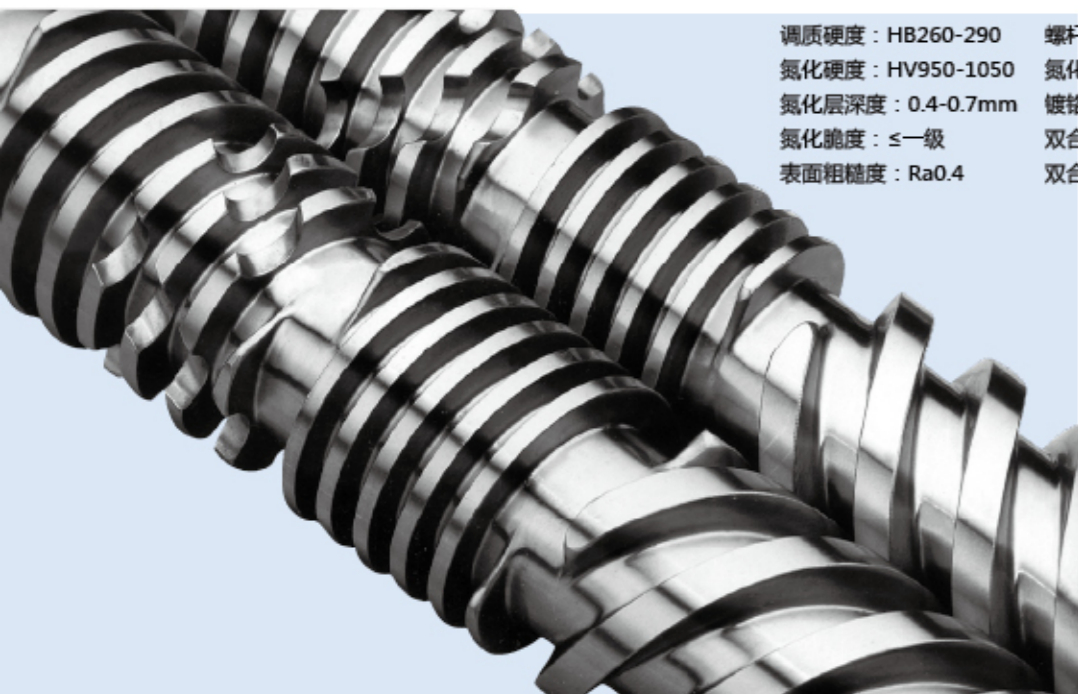
Designed by Demaji

技术参数

Technical parameter

调质硬度：HB260-290
 氮化硬度：HV950-1050
 氮化层深度：0.4-0.7mm
 氮化脆度：≤一级
 表面粗糙度：Ra0.4

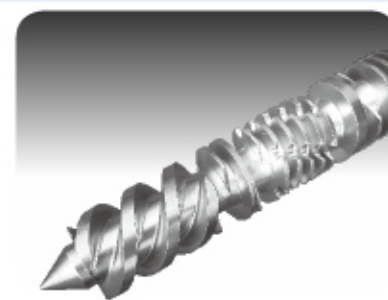
螺杆直线度：0.015mm
 氮化后表面镀铬层硬度：≥900HV
 镀铬层厚度：0.05-0.10mm
 双合金硬度：HRC56-65
 双合金深度：0.8-2.0mm



用于型材 (木塑) 挤出
 For Pipe (WPC) Extrusion



型号 model	传动功率 (kw) motor power	螺杆直径 (mm) screw dia.	螺杆转速(rpm) screw rotation speed	PVC产量 (kg/h)
DMJ45/90	15	45/90	34.7	60-80
DMJ50/105	18.5	51/105	34.7	80-100
DMJ55/110	22	55/110	34.7	120
DMJ65/132	30-37	65/132	34.7	150-250
DMJ80/156	55	80/156	34.7	250-400
DMJ92/188	110-132	92/188	34.7	500-700



型号 model	传动功率(kw) motor power	螺杆直径(mm) screw dia.	螺杆转速(rpm) screw rotation speed	PVC产量 (kg/h)
DMJ45/90	15	20	45	100
DMJ50/105	18.5	45/90	45	120
DMJ55/110	22	51/105	45	150
DMJ65/132	37	55/110	45	250
DMJ80/156	55	45	34.7	450
DMJ92/188	110	150	34.7	800

锥形双螺杆

用于管材挤出
 For Pipe Extrusion



Designed by Demaji



调质硬度：HB260-290
氮化硬度：HV950-1050
氮化层深度：0.4-0.7mm
氮化脆度：≤一级
表面粗糙度：Ra0.4

螺杆直线度：0.015mm
氮化后表面镀铬层硬度：≥900HV
镀铬层厚度：0.05-0.10mm
双合金硬度：HRC56-65
双合金深度：0.8-2.0mm】

锥形双螺杆

Tungsten Carbide 0.5-52%



技术参数 Technical parameter

调质硬度：HB260-290	螺杆直线度：0.015mm
氮化硬度：HV950-1050	氮化后表面镀铬层硬度： ≥ 900 HV
氮化层深度：0.4-0.7mm	镀铬层厚度：0.05-0.10mm
氮化脆度： \leq 一级	双合金硬度：HRC56-65
表面粗糙度：Ra0.4	双合金深度：0.8-2.0mm



平形双螺杆



技术参数

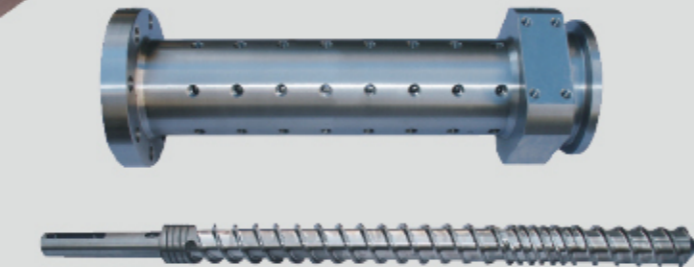
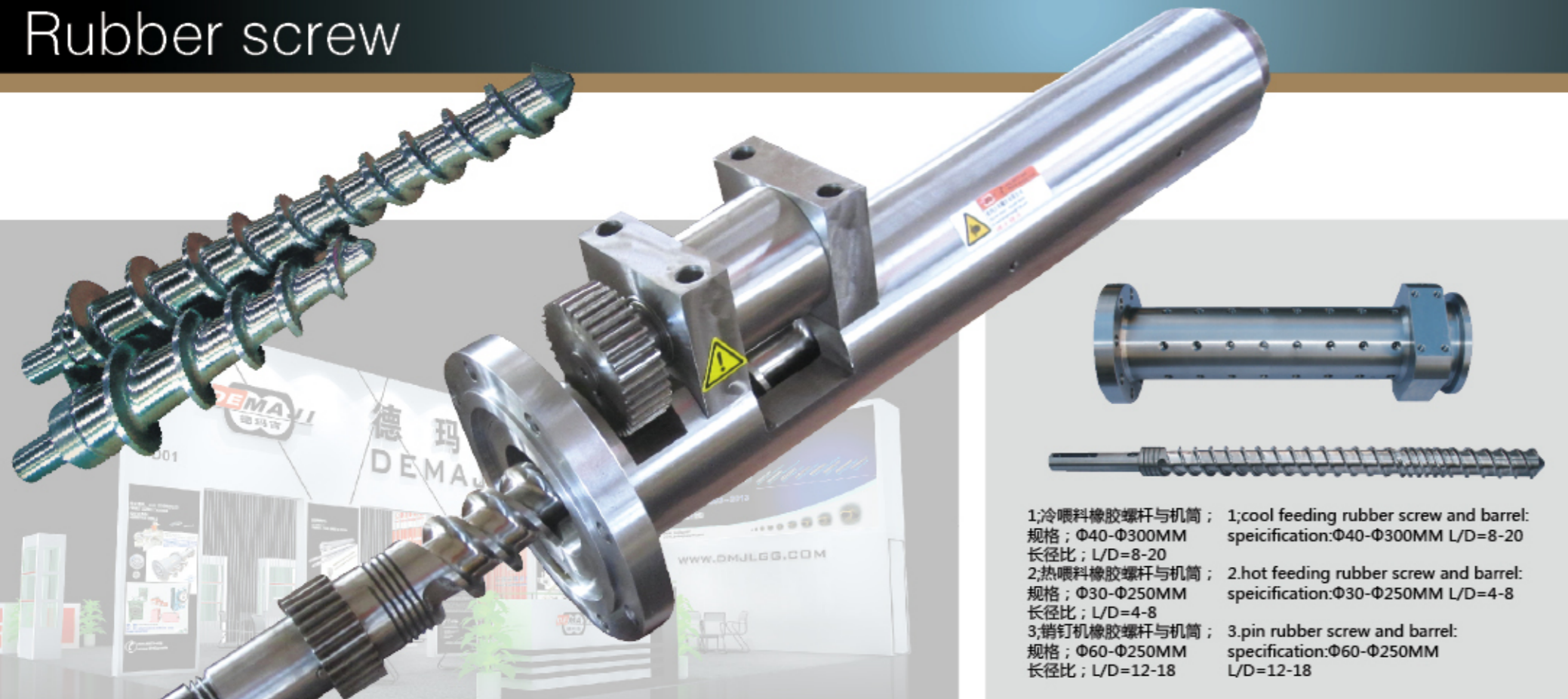
Technical parameter

型号 model	传动功率(kw) motor power	螺杆直径(mm) screw dia.	长径比 L/D	螺杆转速(rpm) screw rotation speed	PVC产量 (kg/h)
DMJ75	45	75	26-36	45	220-350
DMJ90	55	90	26-36	45	280-460
DMJ110	75	110	26-36	45	350-650
DMJ120	110	120	26-36	45	500-80
DMJ130	132	130	26-36	45	680-1000



平形双螺杆

Rubber screw



1;冷喂料橡胶螺杆与机筒; 1; cool feeding rubber screw and barrel:
规格; $\Phi 40-\Phi 300\text{MM}$ speification: $\Phi 40-\Phi 300\text{MM}$ L/D=8-20
长径比; L/D=8-20
2;热喂料橡胶螺杆与机筒; 2. hot feeding rubber screw and barrel:
规格; $\Phi 30-\Phi 250\text{MM}$ speification: $\Phi 30-\Phi 250\text{MM}$ L/D=4-8
长径比; L/D=4-8
3;销钉机橡胶螺杆与机筒; 3. pin rubber screw and barrel:
规格; $\Phi 60-\Phi 250\text{MM}$ speification: $\Phi 60-\Phi 250\text{MM}$
长径比; L/D=12-18



技术参数 Technical parameter

项目 型号	DMJ-140	DMJ-150	DMJ-170	DMJ-190		
驱动功率 (kw)	119	132	160	180	250	
主螺杆转速 (r/min)	3-60	3-60	3-60	3-60	3-60	
强制喂料功率 (kw)	7.5	7.5	11	11		
导热油需要量 (dm ³)	400	400	400	600	600	
PVC透明片挤出量 (Kg/h)Max	500	600	900	1100	1800	
PVC有色硬片挤出量 (Kg/h)Max		700	800	1100	1300	2000
PVC软膜挤出量 (Kg/h)Max	900	1000	1200	1500	2400	



橡胶螺杆

行星螺杆、机筒

Planetry screw barrel



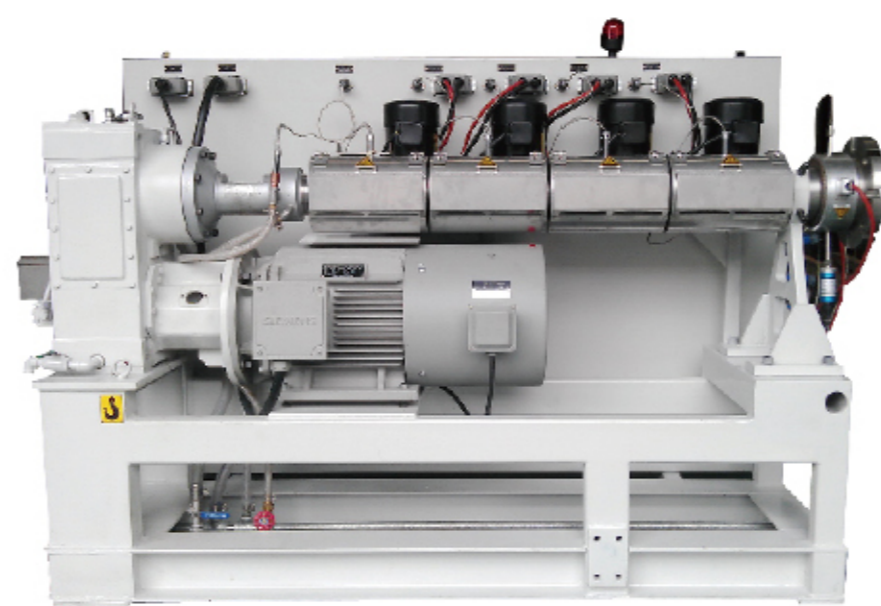
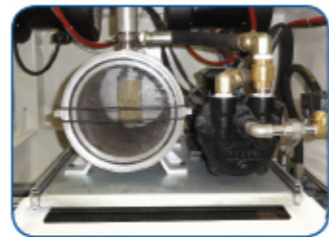
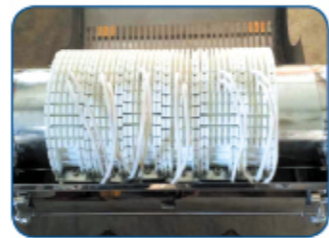
SJY、ZLYJ系列塑料单螺杆挤出机齿轮箱
SJY、ZLYJ Serial Gearboxes for Plastic Single Screw Rod Extruder

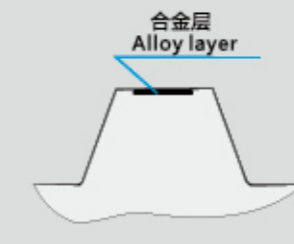
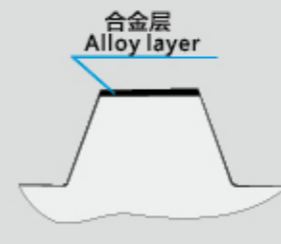
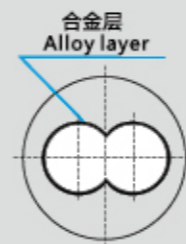
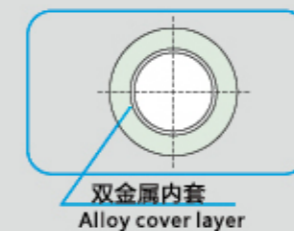
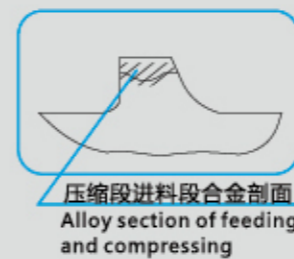
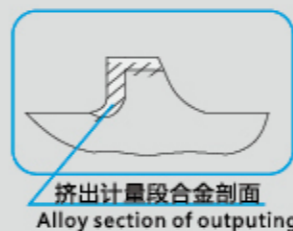
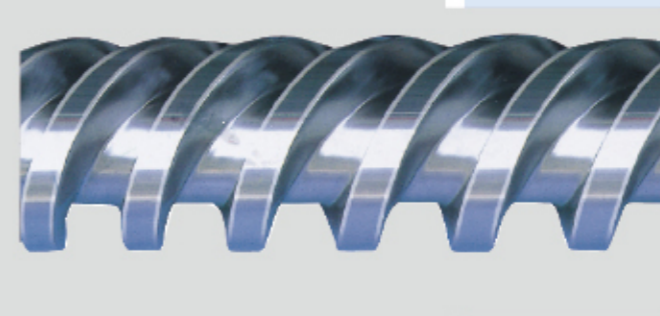
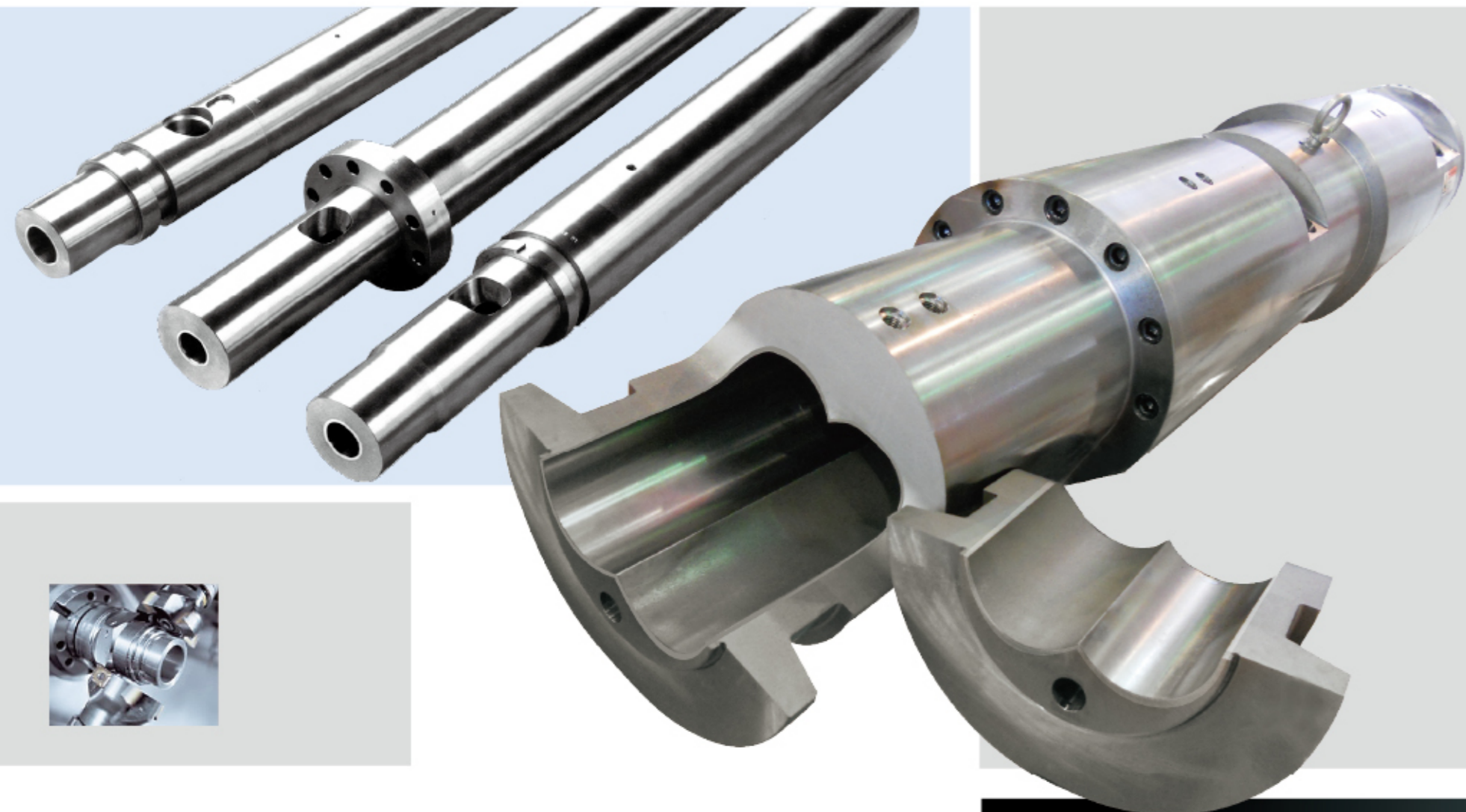
SJY、ZLYJ系列塑料橡胶单螺杆挤出机齿轮箱广泛配套于高中档塑料、橡胶、化纤挤出机。
SJY、ZLYJ Serial Gearboxes for Plastic and Rubber Single Screw Rod Extruder is a special reducer of the extruder researched and developed by combining actual condition of our country. They are widely used top and middle grade plastic, rubber and chemical fiber extruders.

齿轮箱系列

ZLYJ系列橡胶单螺杆挤出机齿轮箱
ZLYJ Serial Gearboxes for Rubber Single Screw Rod Extruder

ZSJV系列橡胶单螺杆挤出机齿轮箱是与橡胶挤出机配套的专用传动减速器。
ZLYJ Serial Gearboxes for Rubber Single Screw Rod Extruder is a special driving reducer matched with rubber





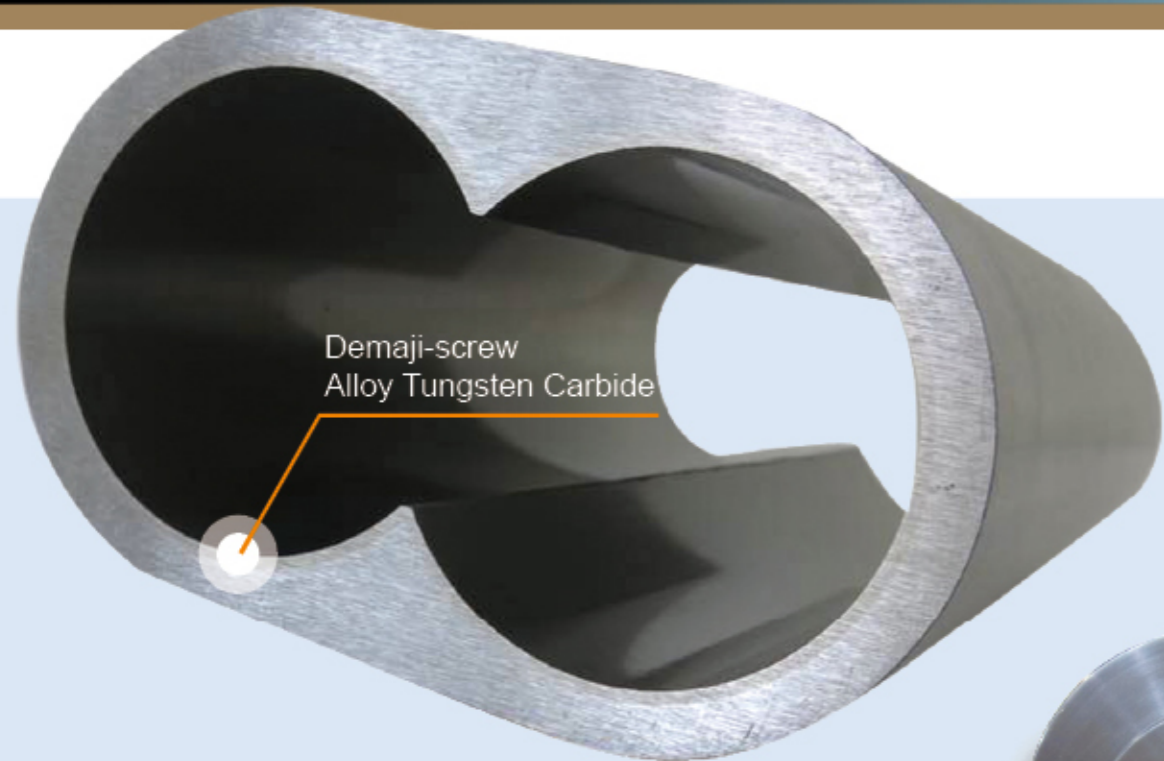
双金属机筒就是在机筒内壁浇铸一层2-5mm的耐磨耐腐蚀的、耐高温的合金，其有效使用寿命比普通氮化机筒大大提高，对于加工工程塑料、氟塑料、聚砜、PPO特殊类型的塑料等，双金属的优越性尤为明显。

本公司生产的单螺杆双金属螺杆，采用特殊合金粉末在螺杆螺棱部分喷焊合金，可以针对不同功能的螺杆，采用不同的合金和焊合方式。

The bimetallic barrel for single screw is a kind of barrel moulding 2-5mm-thick alloy coat on the barrel inner wall which has excellent corrosion resistance, abrasion resistance and high working temperatre.And its useful service life is grreatly improved contrast to the common nitrided barrel. Bimetal has more obvious advantages when procesing special plastics to enhance the abrasion life, such as engineering plastics, fluorine plastics ,PPO,and etc.

The company uses special alloy powders being sprayed and welded on the screw's ridge,and used different alloys and welding methods for the screw of different functions.

The bimetallic screw and barrel



Demaji-screw
Alloy Tungsten Carbide

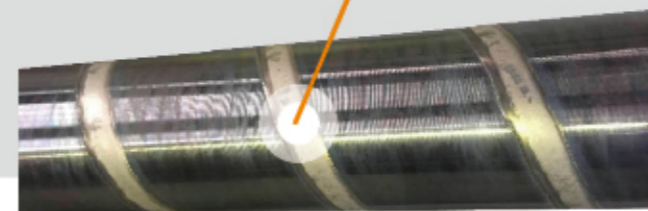


Demaji-screw
Alloy Tungsten Carbide

粉末冶金技术-合金材料-特殊合金钢-耐磨耐腐-寿命提高2-5倍。

**powder metallurgy technology-bimetallic material-
Special Bimetallic steel -wear resistance and
corrosion resistance-improve 2-5 times working life**

Demaji-screw
Alloy Tungsten Carbide

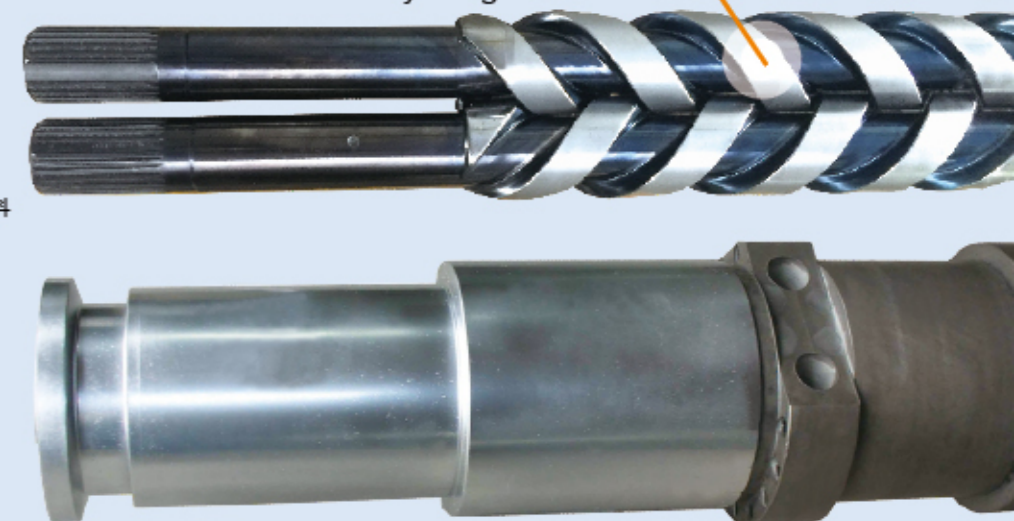


Demaji-screw
Alloy Tungsten Carbide



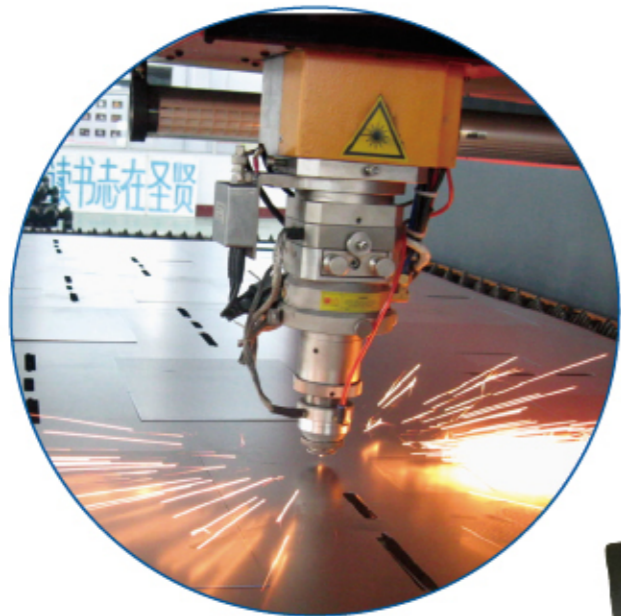
产品类别：料筒内孔离心浇铸双合金
加工范围：内径15mm到500mm 有效长度：80000 mm
加工工艺：HP/HVOF+冶金结合
合金成份：Ni+Cr+Wc等
硬度指标：HRC62-64
密着力：>126MPA
直线度：0.015mm/m
表面粗糙度：Ra0.4um
合金铭牌：瑞典
产品备注：专利全合金烧结技术，超耐磨损，超耐腐蚀，适用无卤料

Demaji-screw
Alloy Tungsten Carbide



product category: bimetallic hole centrifugal casting barrel
Working Range: inner diameter 15mm-500mm, effective length:80000mm
processing technic: HP/HVOF+Metallurgical Bonding
alloying component : Ni+Cr+Wc and so on
hardness scale: HRC62-64
adhesion power:>126MPA
straightness:0.015mm/m
surface roughness: Ra0.4um
Alloy nameplate:Sweden
Product note: Patent all alloy sintering technology, super wear resistance, super corrosion resistance, it is suitable for halogen free material

The bimetallic screw and barrel



粉末冶金技术-合金材料-特殊合金钢-耐磨耐腐-寿命提高2-5倍。
powder metallurgy technology-bimetallic material-Special Bimetallic steel -wear resistance and corrosion resistance-improve 2-5 times working life

