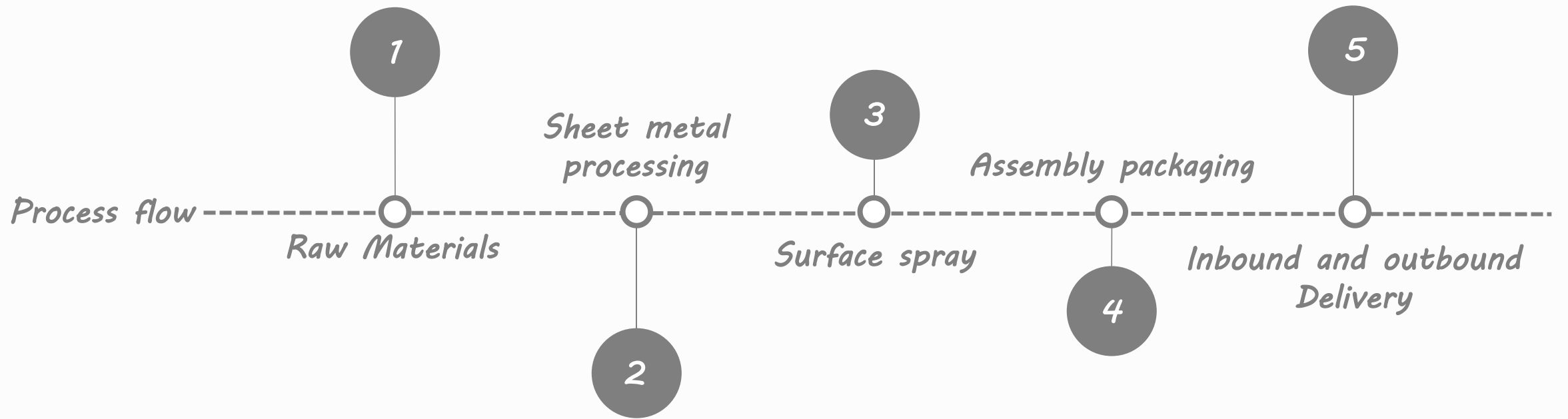
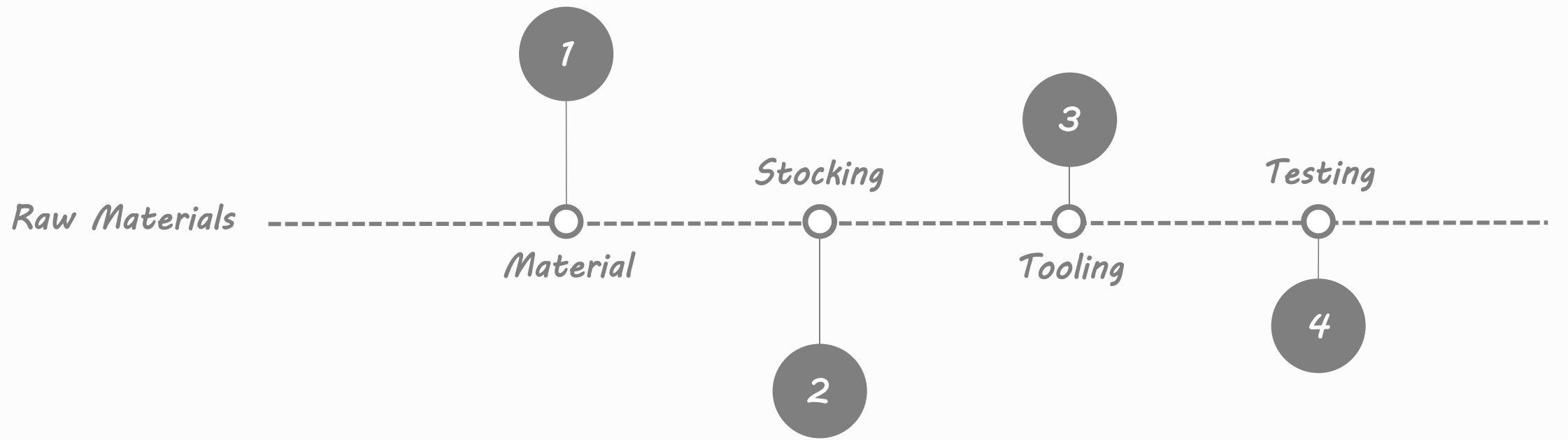


A standing desk how to be manufactured

www.cnstandingdesk.com





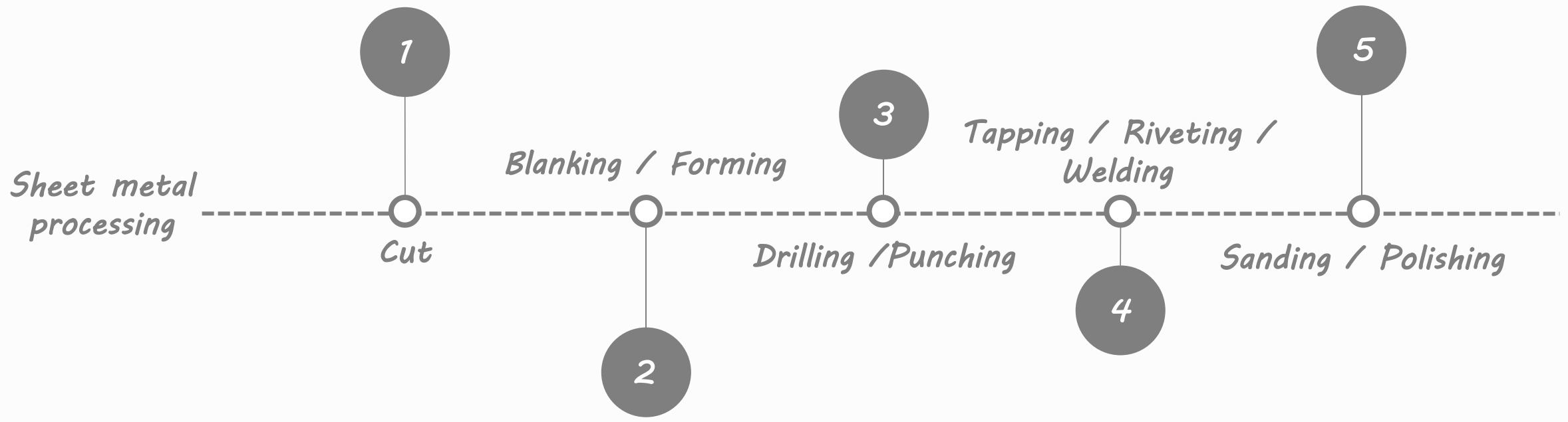
*Raw material
- to be processed*

*Classification
Tube & Sheet*

*Tubes: for Legs & Connecting rods
Regular thickness: 1.5mm*

*Sheet: for Support & Foot
Regular thickness: 2mm*





CUT

*Pipe Cutter: for Connecting Rod
Accuracy requirements: medium*

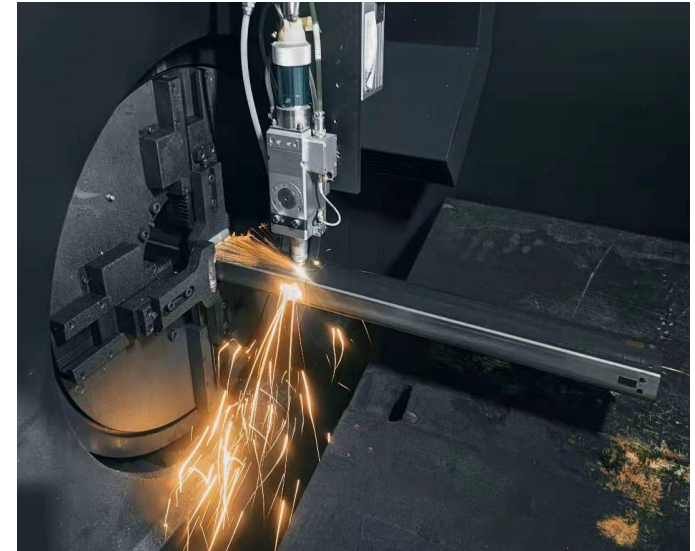
*Laser Cutting: for Leg's tube
Accuracy requirement: highest*



Blanking / Forming

Feature

- *Sheet and tube with holes in one piece*
- *Good surface treatment, less burrs*



Polishing

*Sheet metal burr surface treatment
to make it beautiful and safe*



Punching

*Hole position technology
for Connecting Frame and Support*

No thread / Medium precision / Fast forming

Drilling

*Hot melt drilling:
requirement for the number of thread rings
but subject to the thickness of the plate*

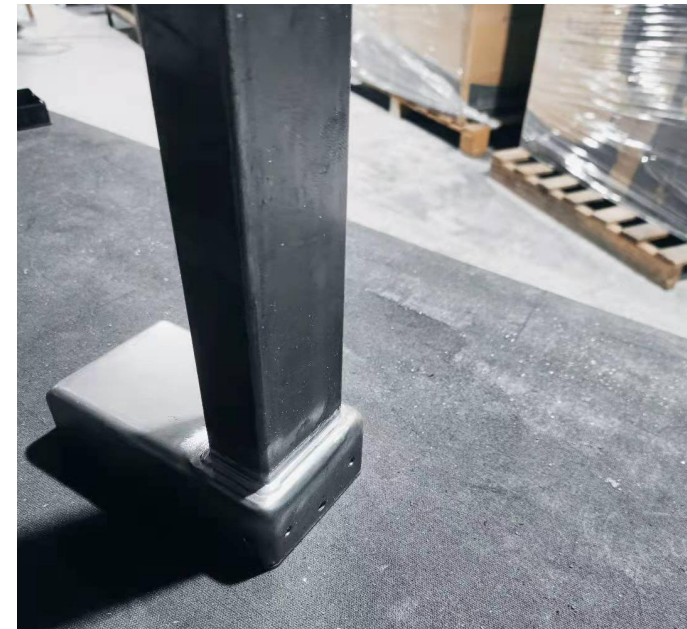
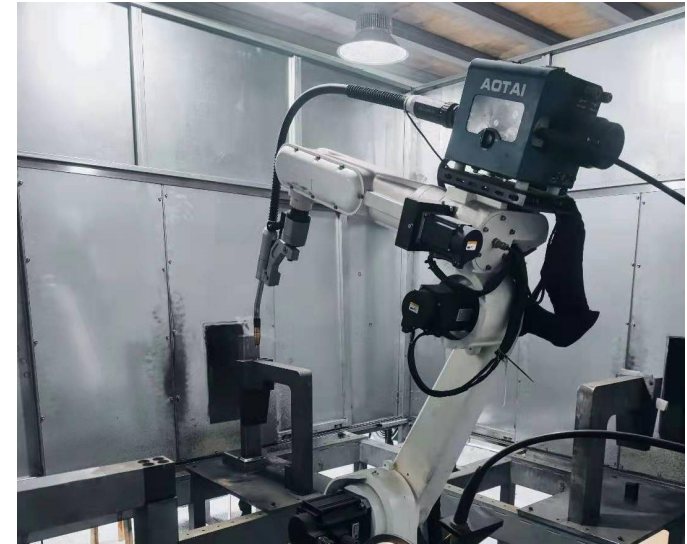
Add an extra 2-4 laps



Welding

*Most of them are welded by manipulators
which are suitable for regular shapes*

*The manual operation of
spot welding process is mostly*



Riveting

Use a riveting gun to install casters

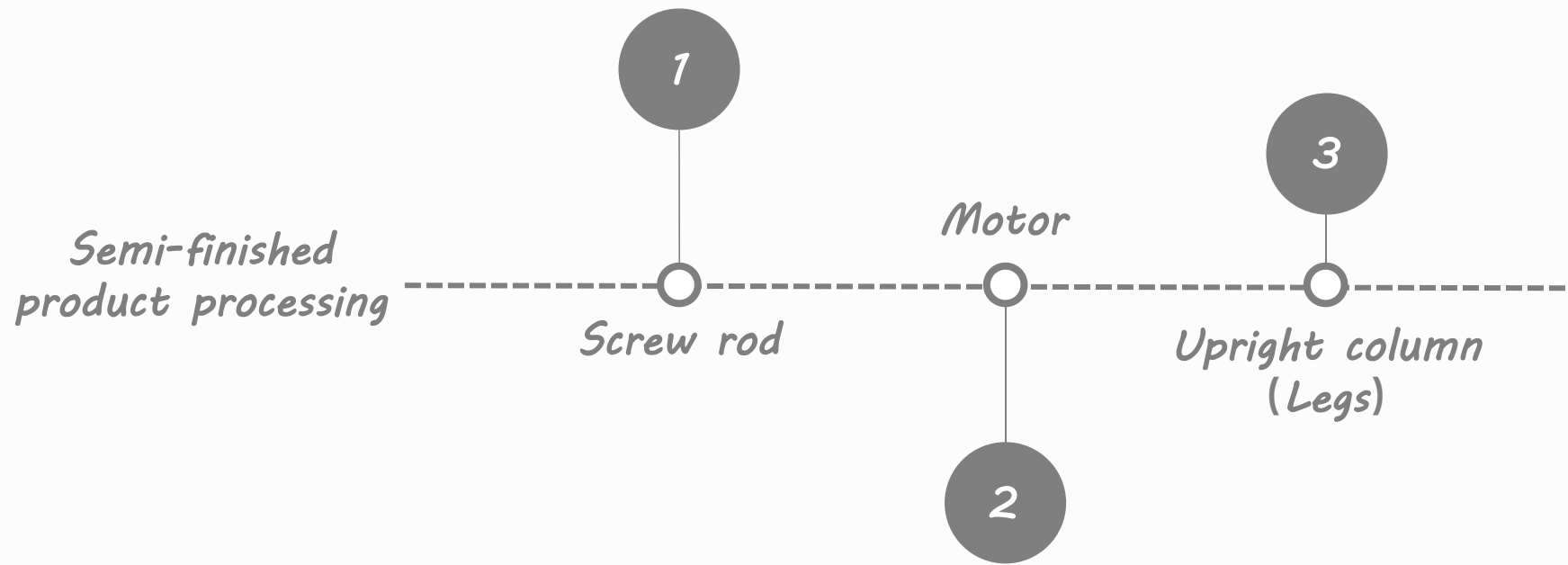


Sheet metal semi-finished product



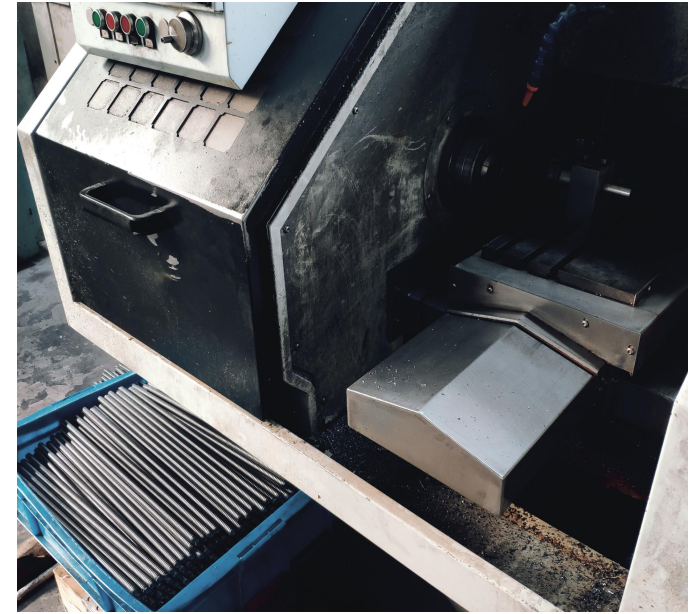
Waiting for the surface to be sprayed





Screw rod

*Round metal tube-
automatically machined by wire rolling machine
according to the required size*



Screw rod assembly

Each assembly is reinforced

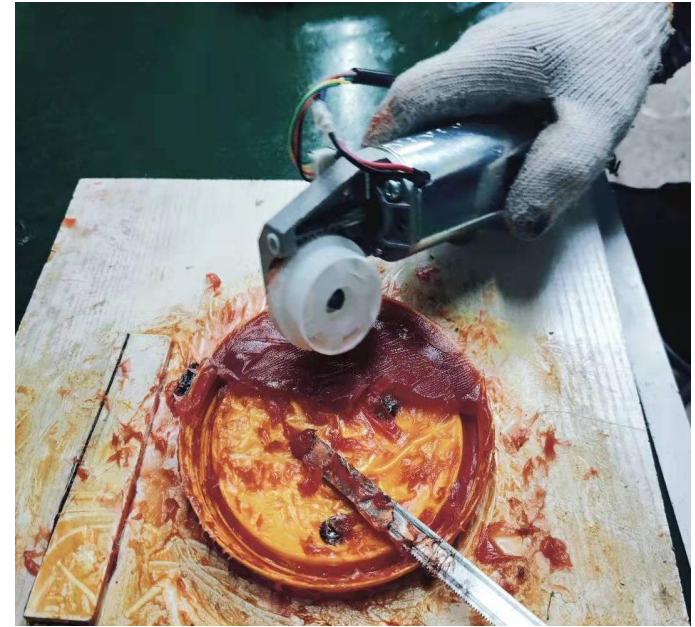
To be installed



Motor

Each motor is smeared with mute oil

Install the motor cable and check it all



Upright column

Pipeline workbench

Components to be installed



Testing



Full weight-bearing inspection



Packaging

*It weighs about 1100 grams and
weighs five layers of double corrugated cardboard cartons.*

High performance protection EPE

*16 or 20 pcs —A pallet
Top cover + four-sided wood guard*



DESKTOPS



Color



Material Choices



Particle Board



Density Board

Edge Choices



Standard Edge



Rounded Edge

Optional Accessories



Office/Gaming Chair



Anti-Fatigue Standing Mat



CPU Holder



Monitor Arm



Desk Light



Office Partition



Socket



Serpentine Tube

THANK YOU