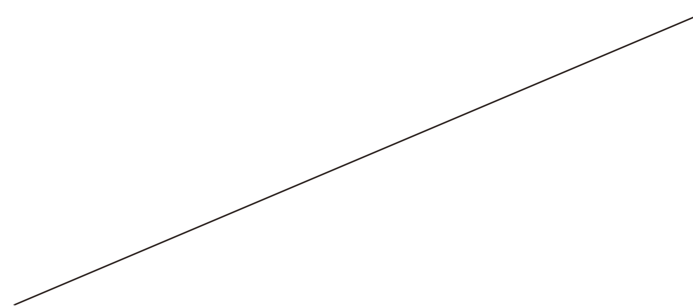


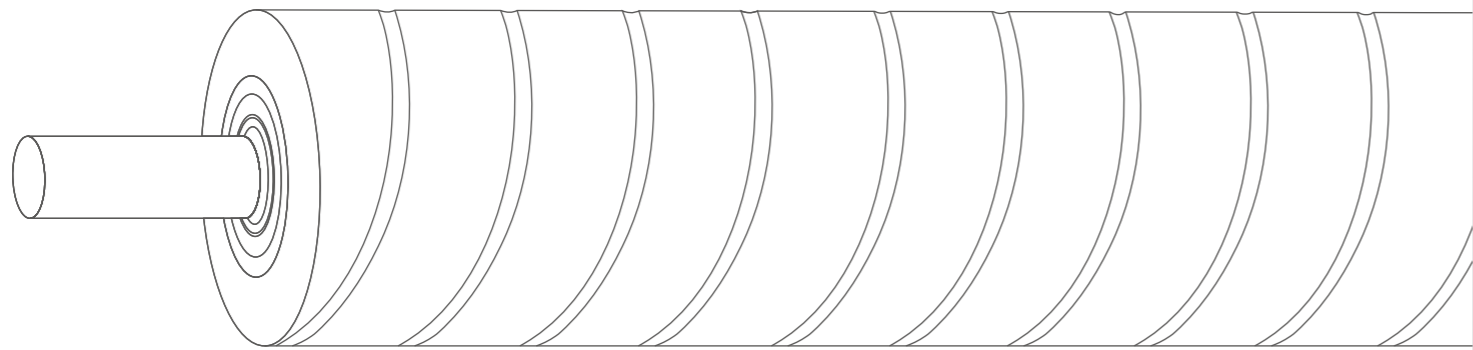
UVB

uv版





瑞安市创博机械有限公司
www.cbbmachine.com



瑞安市创博机械有限公司
Ruian Chuangbo Machinery Co.,Ltd.

地址:浙江省瑞安市南滨街道工业区创博机械
电话:0577-65001588
销售部:0577-25886588
外贸部:0577-25886587
传真:0577-65001587
邮编:325200
Http://www.cbbmachine.com
E-mail:chuangbo@cbbmachine.com

Add: Nanbin Industrial Zone, Ruian City,
Zhejiang Province, China.
Tel:+86-577-65001588
Sales department:+86-577-25886588
International department:+86-577-25886587
Fax:+86-577-65001587
P.C:325200
Http://www.cbbmachine.com
E-mail: chuangbo@cbbmachine.com

创博机械
CHUANGBO MACHINERY

新厂区 New factory area



老厂区 Old factory area



ABOUT CHUANGBO

Ruian Chuangbo Machinery Co.,Ltd.

瑞安市创博机械有限公司成立于1995年，位于瑞安市南滨街道工业区，是专业制造机械部件及机电产品的生产厂商，集产品研发、生产、销售于一体的高新技术企业。公司拥有自主进出口经营权，产品随畅销全国及出口多个国家和地区。公司厂区共有面积42000平方米，员工200余人，加工设备150余台，规模为目前国内细分行业领先地位。

Ruian Chuangbo Machinery Co., Ltd. was established in 1995 and is located in the Nanbin Street Industrial Zone of Ruian City. It is a professional manufacturer of mechanical components and electromechanical products, and a high-tech enterprise that integrates product research and development, production, and sales. The company has independent import and export rights, and its products are sold nationwide and exported to multiple countries and regions. The company has a total area of 42000 square meters, more than 200 employees, and more than 150 processing equipment, with a scale that is currently leading in the domestic sub industry.

公司拥有国内同行业最先进的生产水平和科研检测设备，产品主要用于锂电池制造设备行业及印刷、包装、塑料、造纸、纺织、制药机械等行业。公司先后获得国家高新技术企业、省级专精特新企业、省级研发中心、省级科技型中小企业、绿色工厂、信用管理示范企业、全国印刷机械标准化技术委员会委员等荣誉称号。

The company has the most advanced production level and scientific research and testing equipment in the same industry in China. Its products are mainly used in the lithium battery manufacturing equipment industry, as well as in industries such as printing, packaging, plastics, papermaking, textiles, pharmaceutical machinery, etc. The company has successively won honorary titles such as National High tech Enterprise, Provincial Specialized and Innovative Enterprise, Provincial R&D Center, Provincial Science and Technology Small and Medium sized Enterprise, Green Factory, Credit Management Demonstration Enterprise, and Member of the National Printing Machinery Standardization Technical Committee.

企业荣誉

Enterprise Honor

砥砺前行，创造辉煌未来我们将做得更好....
Always Progressing Doing Better In Future



产品目录

Product Catalog

铝导辊	03
ALUMINUM ROLLER	
气胀轴	09
AIR SHAFT	
气胀鼓/气胀套	11
AIR DRUM/AIR ADAPTER	
气胀轴配件	11
AIR SHAFT SPARE PART	
滑差轴	12
DIFFERENTIAL SHAFT	
机械胀套	13
MECHANICAL EXPAND CHUCK	
安全夹头	14
SAFETY CHUCK	
弧形辊	15
BANANA ROLLER	
离心风机	17
CENTRIFUGAL FAN	
力矩电机	19
ELECTRIC TORQUE MOTOR	
磁粉制动器/磁粉离合器	21
MAGNETIC POWDER BRAKE/ MAGNETIC POWDER CLUTCH	
自动张力控制器	23
AUTOMATIC TENSION CONTROLLER	
手动张力控制器	24
MANUAL TENSION CONTROLLER	

铝导辊 ALUMINUM ROLLER

概述

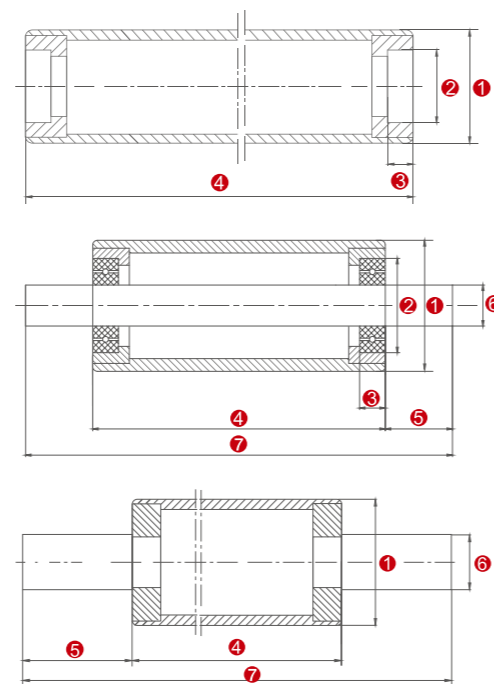
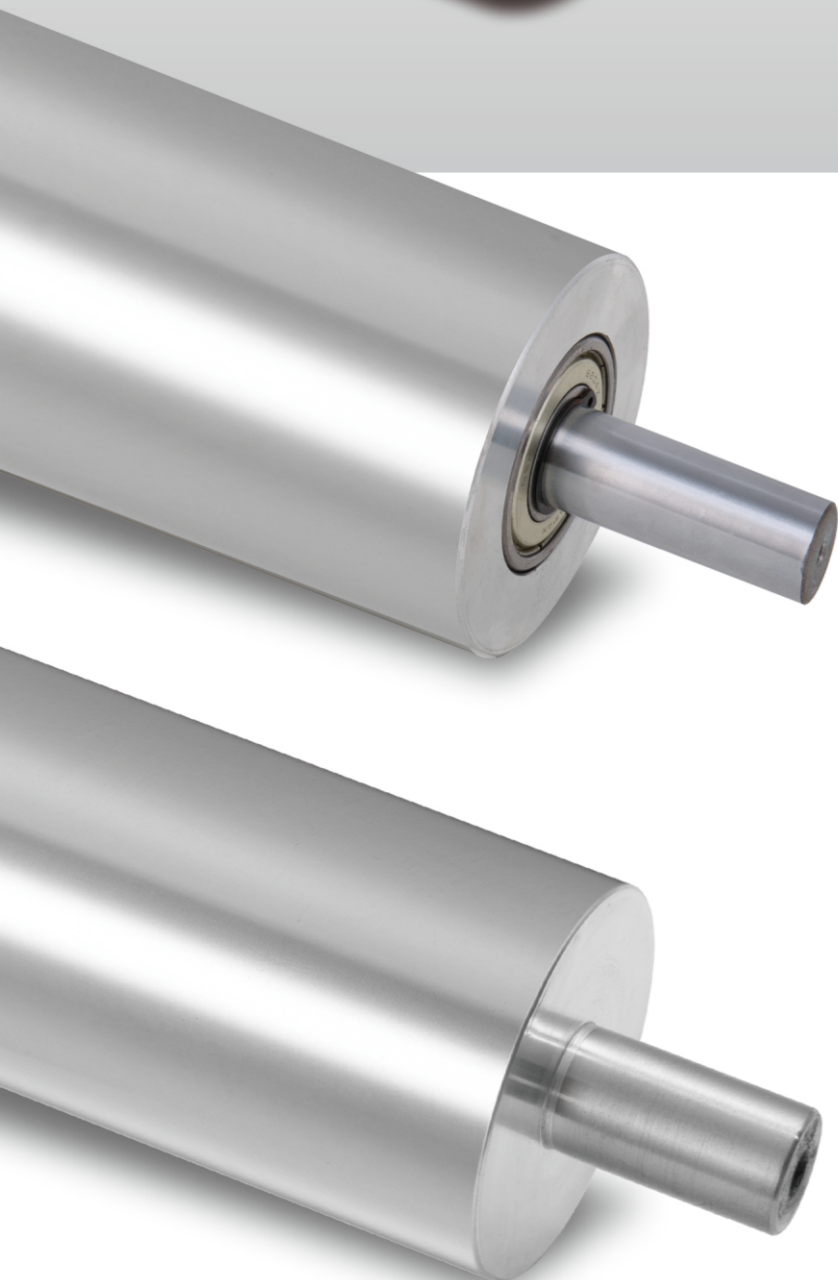
铝导辊的铝导辊又称“铝合金导辊”，是通过选用优质的铝合金材料，经模具，成管型，内有加强筋结构，强度高。外径有φ25mm-φ400mm等多种规格。全轴经电脑动平衡校正处理，使平衡最高精度达到2g内，运用精密的设备及特殊刀具，正常辊面光泽度可以达到0.8，特殊情况也可做超镜面处理，同轴度达到0.02mm。轴端经特殊工艺处理，配合进口轴承，在高速运转下，皆能轻松自如。根据产业的不同需求，辊面还可做特殊处理：阳极氧化处理、阳极硬质氧化处理、着色氧化处理、微弧氧化处理，也可做碳化钨陶瓷复合涂层、氧化铝钎、氧化铝、氧化铬、氧化锆等涂层处理，等离子合金防粘涂层、喷砂涂层、软木贴包覆等表面处理使其具有良好的耐刮、耐磨、防粘性能。铝导辊具有强度高、阻力小、重量轻、转动灵活、不生锈、耐磨耐腐蚀，特别适用于锂电池制造设备行业及印刷、包装、塑料、造纸、玻纤、制药、纺织等机械行业及各种卷材类产业。

CHARATERISTIC

Aluminum guide roller (also known as "aluminum alloy guide roll") is made of high quality aluminum alloy materials, and it has all kinds of modules and sizes with ribs structure and the outside diameter is from 25mm to 400mm. Under the cheat by computer balancing correction process, the dynamic balance of the aluminum roller will be small than 2g. With us ing of sophisticated equipment and special tools, the roll surface roughness can be 0.8, super mirror treatment can also be done under special circumstances, concentricity can reach to 0.02mm. Special cheated in the shaft axle of the roller, with imported bearings, the aluminum guide roller works well even at high speed. According to different industries, the surface of the roller can also do special treatment: Soft Anodizing treatment, Hard Anodize treatment, Colored Anodize treatment, Micro-Arc Oxidation treatment, Carbide Ceramic Composite Coating, Aluminum Oxidetitanium Oxide, Aluminum Oxide, Chromic Oxide, Zirconium Oxide And Other Coating treatments, Plasma Alloy Anti-Sticking coating, Sandblasting coating, Cork coating and so on. The treatments can make the roller scratch, abrasion and anti-sticky. Aluminum guide roller has normally 3 standard types: Without-shaft type, Shaft type and Through-shaft type. The surface can treated by normally 3 standard line types: Center line type, Cross line type and Grooved type. Chuangbo brand aluminum guide roller is high strength, low resistance, light weight, flexible rotation, no-rusty, wearable and corrosion resistance, especially suitable for Lithium battery manufacturing equipment industry and printing, packaging, plastics, paper, glass, pharmaceutical, textile machinery and industries.



www.cbmachine.com

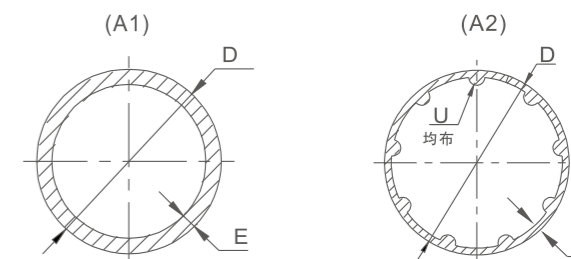


- ① 铝辊外径 The roller diameter
- ② 轴承外径 The bearing diameter
- ③ 轴承厚度 Bearing thickness
- ④ 辊面长度 Roller length
- ⑤ 轴头长度 Axle length
- ⑥ 轴头外径 Axle diameter
- ⑦ 总长度 Total Length

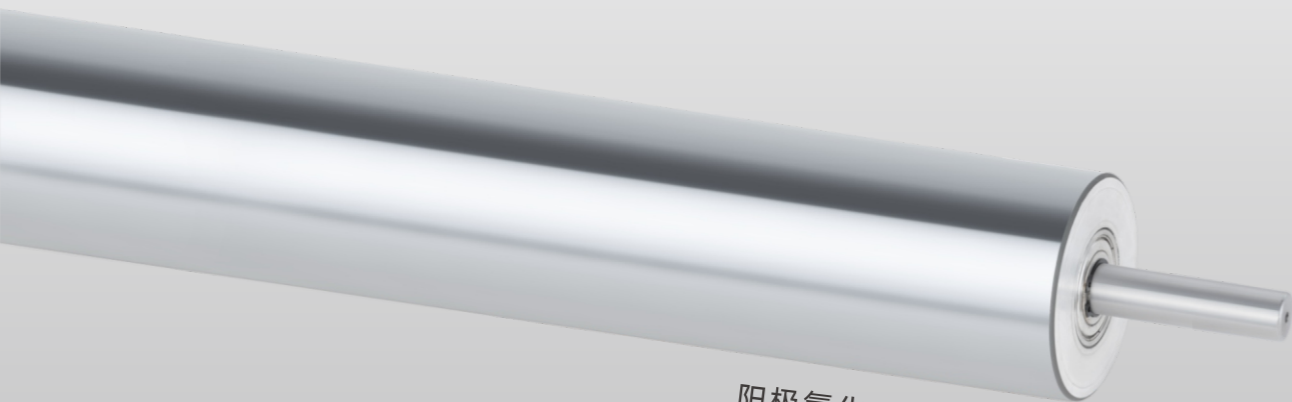
注：以上尺寸均由用户自定义。

铝导辊常用原材料数据 ALUMINIUM TUBE DATA

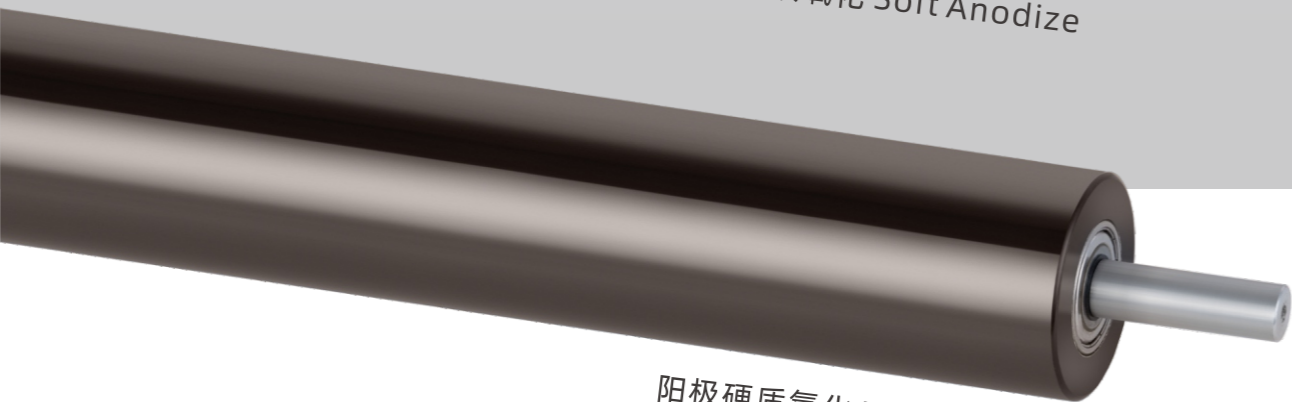
外径-D OD-D	内孔 ID	壁厚-E THK-E	加强筋标志 Rib INDN	加强筋数量-U Rib QTY-U
φ22.7	φ15	3.85	A1	
φ25.7	φ18.3	3.7	A1	
φ28	φ22	3	A1	
φ30.1	φ20.1	5	A1	
φ33.8	φ25.4	4.2	A1	
φ35	φ26	4.5	A1	
φ38.2	φ30.2	4	A1	
φ40.1	φ30.1	5	A1	
φ42	φ32	5	A1	
φ45	φ35	5	A1	
φ45	φ32	6.5	A1	
φ47.1	φ41.1	3	A1	
φ50.2	φ40.2	5	A1	
φ51	φ38.6	6.2	A2	3-R3
φ55	φ45	5	A1	
φ57.2	φ50.2	3.5	A1	
φ60	φ50	5	A1	
φ60.6	φ50.8	4.9	A2	6-R3
φ70	φ61.2	4.4	A1	
φ72.4	φ64.4	4	A2	8-12.5
φ75	φ66	4.5	A1	
φ76	φ58	9	A1	
φ81.4	φ72.2	4.6	A2	7-R3.5
φ80.2	φ70	5.1	A2	8-R4.5
φ80	φ64	8	A2	8-R5
φ90.5	φ82.9	3.8	A2	9-R5
φ90.6	φ75.6	7.5	A1	
φ101	φ91.8	4.6	A2	9-R4.5
φ100.8	φ90	5.4	A2	9-R6.5
φ111	φ101.8	4.6	A2	8-R4.2
φ121.2	φ111	5.1	A2	9-R5
φ120.4	φ108.4	5.9	A2	9-R6.5
φ131	φ120	5.5	A2	9-R5
φ151.5	φ139.7	5.9	A2	10-R5.4
φ152	φ136	8	A1	
φ162.5	φ146.5	8	A1	
φ172	φ156	8	A2	9-R5
φ180	φ160	10	A1	
φ202	φ186	8	A1	
φ240	φ208	16	A1	
φ320	φ296	12	A1	



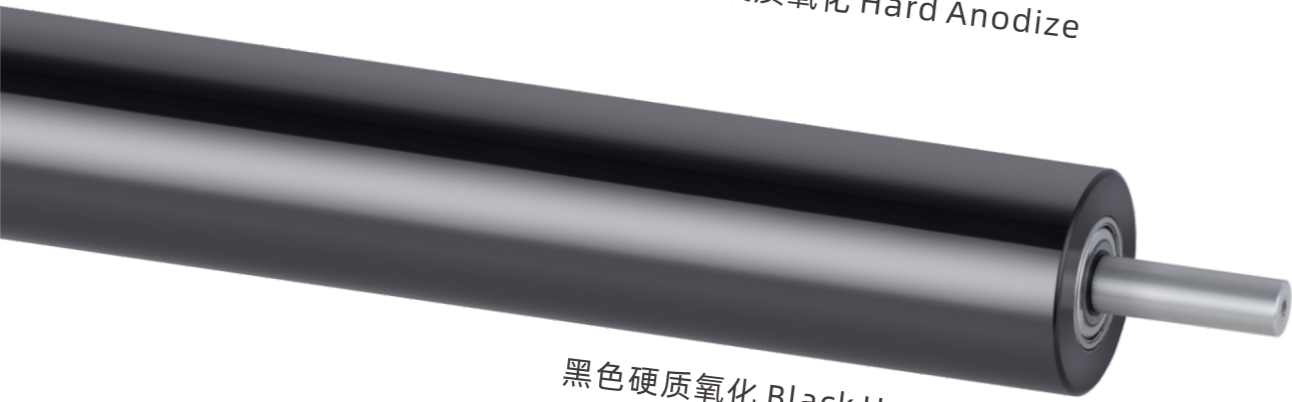
表面处理参考
SURFACE TREATMENT



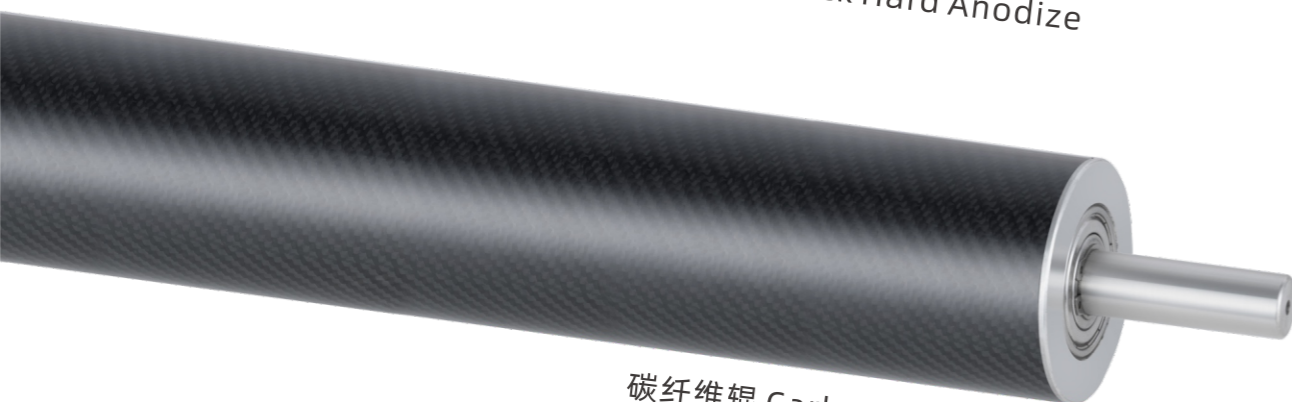
阳极氧化 Soft Anodize



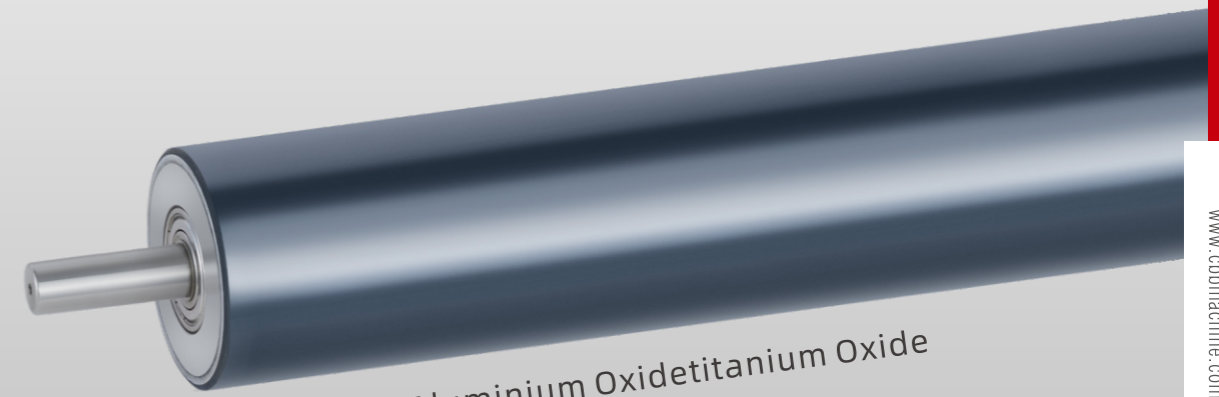
阳极硬质氧化 Hard Anodize



黑色硬质氧化 Black Hard Anodize



碳纤维辊 Carbon Fiber Roller



氧化铝钛涂层 Aluminium Oxide/Titanium Oxide



软木贴 Cork wrap



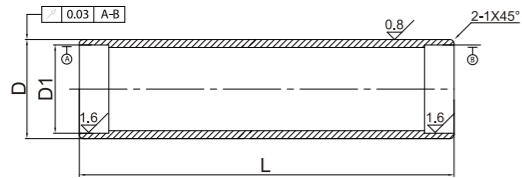
微弧氧化 Micro Arc Oxidation



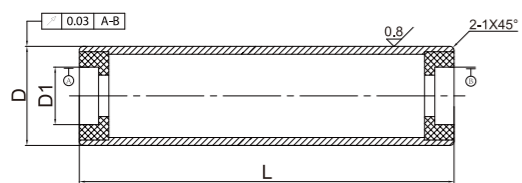
等离子合金防粘涂层 Plasma Alloy Anti-sticking

标准样式 ROLLER TYPE

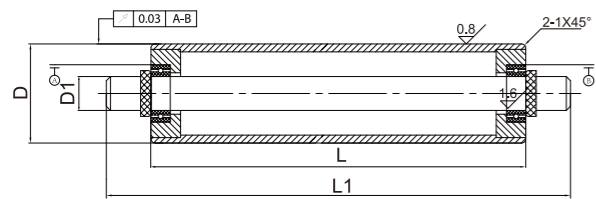
平管型 Flat tube type



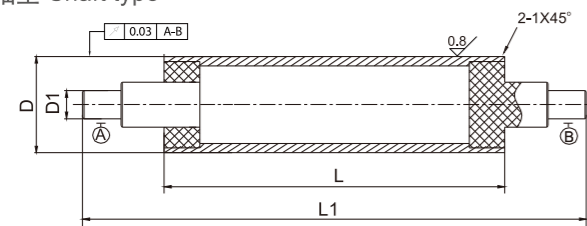
无轴型 Without shaft type



通轴型 Through shaft type

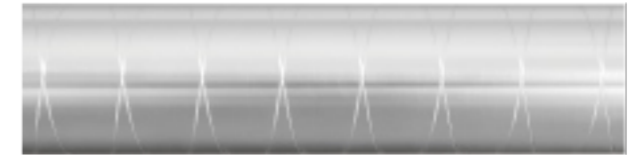
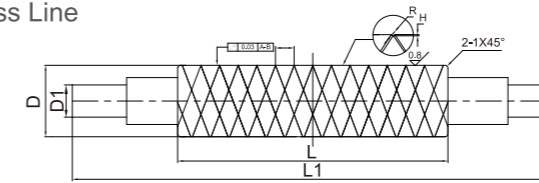


带轴型 Shaft type

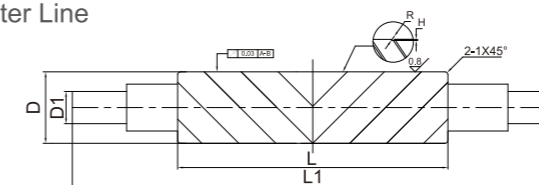


表面纹理 SURFACE LINE

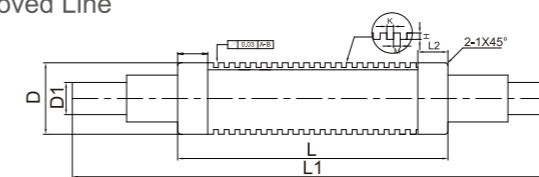
交叉线
Corss Line



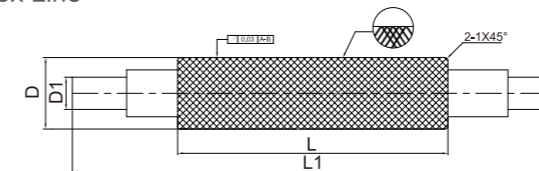
中心开线
Center Line



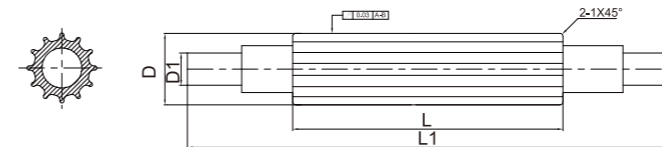
槽辊
Grooved Line



滚花
Anilox Line



罗拉辊
Rolla Line



气胀轴 AIR SHAFT

概述

气胀轴是一种特制的收卷、放卷轴，是经过高压充气后表面（键条/板条）可以突起，放气后（键条/板条）迅速缩回的轴。气胀轴使用极为方便快捷，用户只需自备气源，空气压力控制在6-8kg/cm²范围内，需锁紧外部的部件（比如圆形相适应的纸管）时，只要充气枪对着气胀轴上的气嘴充气便可完成，键条/板条会突出顶住外部的部件。需放松纸管卸料时，用手按下充气嘴上的活动气芯即可放气，键条/板条会缩回原位，外部的部件即可取出。

气胀轴分为：键条式气胀轴（钢制、铝制）
板条式气胀轴（三片、四片、六片）。

气胀轴的用途很广，凡有收卷、放卷、分切的机器，都可使用气胀轴，甚至包括轻金属行业，广泛应用于：印刷、包装、塑料、造纸、玻纤、制药、电子电池、纺织等机械行业及各种卷材类加工产业。

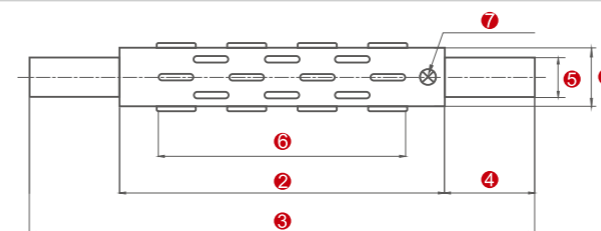
SUMMARY

Air shaft is a special shaft for rewind and unwind. The shaft surface will expand when the high-pressure gas filled in the shaft. Air shaft is easy to operate, the user can only have the air supply with the air pressure controlled within 6-8kg/cm². Just aired the shaft through the air valve and when user want to lock the web, push the core activities of the air valve to deflate, the expand part will revert to its original appearance, then web can be removed easily.

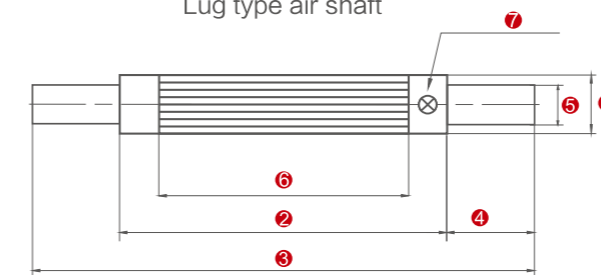
Air shaft include lug type (steel-made or ally-made) and leaf type. Air shaft is widely used for winding, rewinding and slitting machines. It is widely used in printing, packaging, plastics, paper, glass, pharmaceuticals, electronic battery, textile machine and industry.

气胀轴数据 AIR SHAFT DATA

规格 Specifications	未充气时直径 Diameter of air shaft before fill up air	充气后直径 Diameter of air shaft after fill up air	适用卷管内径 Inside diameter of suitable core
1"	Φ24	Φ26~Φ27	Φ25~Φ26
1.5"	Φ36	Φ38~Φ39	Φ38~Φ38.5
2"	Φ49	Φ51~Φ53	Φ50~Φ51
3"	Φ74	Φ76~Φ80	Φ75.5~Φ78
4"	Φ99	Φ101~Φ105	Φ101~Φ102
5"	Φ125	Φ127~Φ131	Φ126~Φ128
6"	Φ150	Φ152~Φ156	Φ151~Φ153
8"	Φ200	Φ202~Φ206	Φ202~Φ204
10"	Φ250	Φ252~Φ256	Φ252~Φ256
12"	Φ300	Φ302~Φ306	Φ302~Φ305



键条式气胀轴
Lug type air shaft



板条式气胀轴
Leaf type air shaft

- ① 气胀轴直径 Shaft diameter
- ② 轴面长度 Shaft body
- ③ 总长度 Total length
- ④ 轴头长度 Axle length
- ⑤ 轴头外径 Axle diameter
- ⑥ 气胀部分 Working units
- ⑦ 气嘴 Air valve

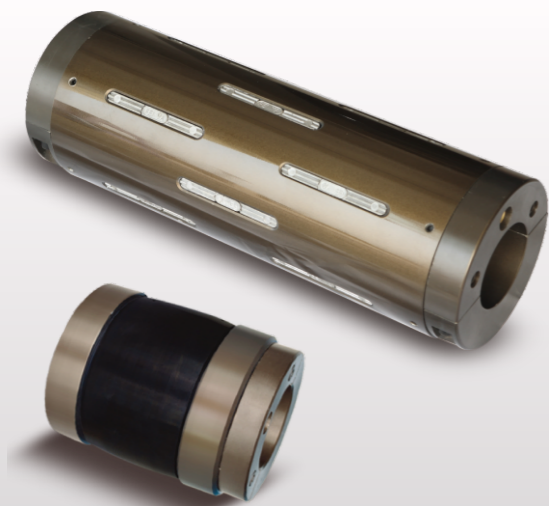
注：以上尺寸均由用户自定义，特殊规格可定制。
Note: The above dimensions are defined by user.

钢制键条式气胀轴
Steel-made
lug type shaft

铝制键条式气胀轴
Aluminum-made
lug type shaft

板条式气胀轴
Leaf type air shaft

通键式气胀轴
Multi bladder
type air shaft



气胀鼓/气胀套 AIR DRUM AIR ADAPTER

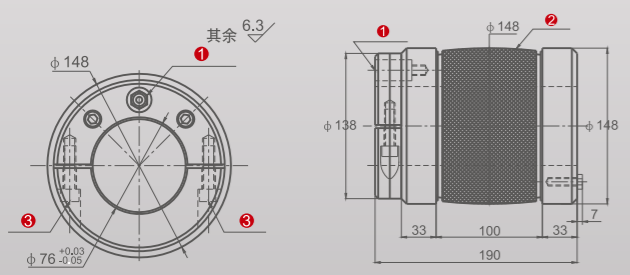
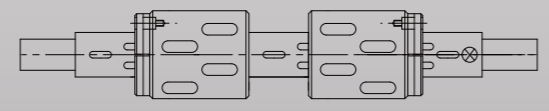
概述

- 1、气胀鼓外表面胀起部分材料为橡胶，已经定型生产，有现货；
- 2、气胀套用途：装配在小规格气胀轴（如3英寸）外面，以达到大规格（如6英寸）的使用效果
- 3、规格可以根据要求定制

SUMMARY

1. The expansion of air drum is made from rubber, the size is fixed.
2. Application for air adapter: used for small size air shaft (such as 3 inch) to reach the same effect of big size air shaft (such as 6 inch).
3. Can customized according to customer's requirement for other sizes.

工作示例



- ① 气嘴 Air valve
- ② 气胀部分 Working unit
- ③ 夹盖调节(螺丝) Clamp cover adjustor (screw)

滑差轴 DIFFERENTIAL SHAFT

概述

滑差轴又称差速轴、摩擦轴，用作分切机的收卷轴及特殊放卷轴。滑差轴由多个滑差环组成，利用滑差轴上各个滑差环打滑的原理，使轴上多个卷筒料，始终保持恒张力收放卷，保证物料张紧有度。滑差轴按原理分，可分为机械滑差轴及气动滑差轴；滑差轴按类型分，可分为键式滑差轴及珠式滑差轴。

SUMMARY

Differential shaft, also known as slip shaft or friction shaft, is used as the winding shaft and special rewinding shaft for slitting machine. The friction torque of the differential ring is controlled by the air pressure, the purpose is to use the slipping on each differential ring on the shaft to make multiple constant tension rolls on the shaft. Differential shaft is divided into mechanical differential shaft and aired differential shaft according to the principle; and can be divided into key type differential shaft and lug type differential shaft according to the type.



珠式气动滑差轴
Ball type differential shaft

键式气动滑差轴
Lug type differential shaft

气胀轴配件 AIR SHAFT SPARE PART

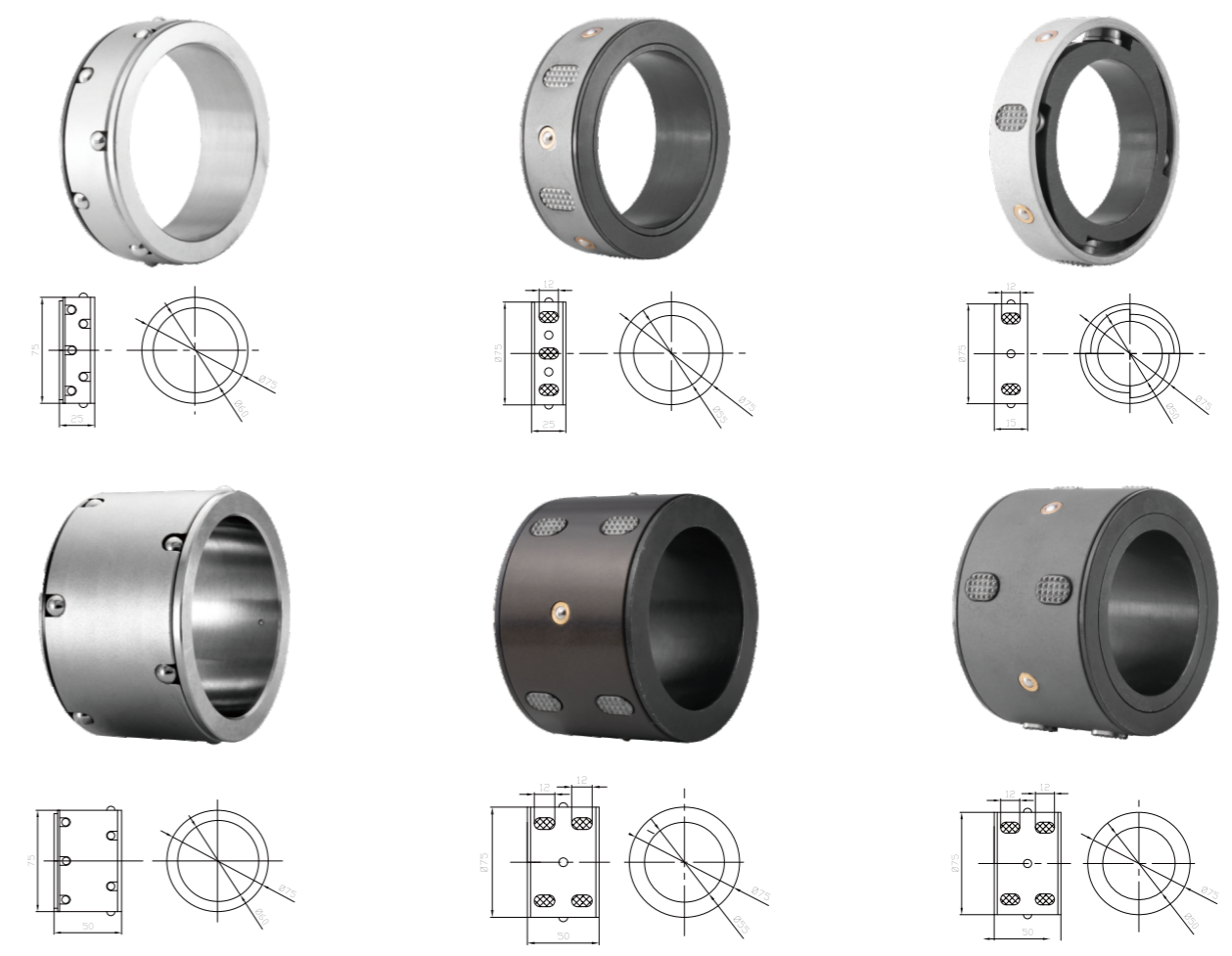
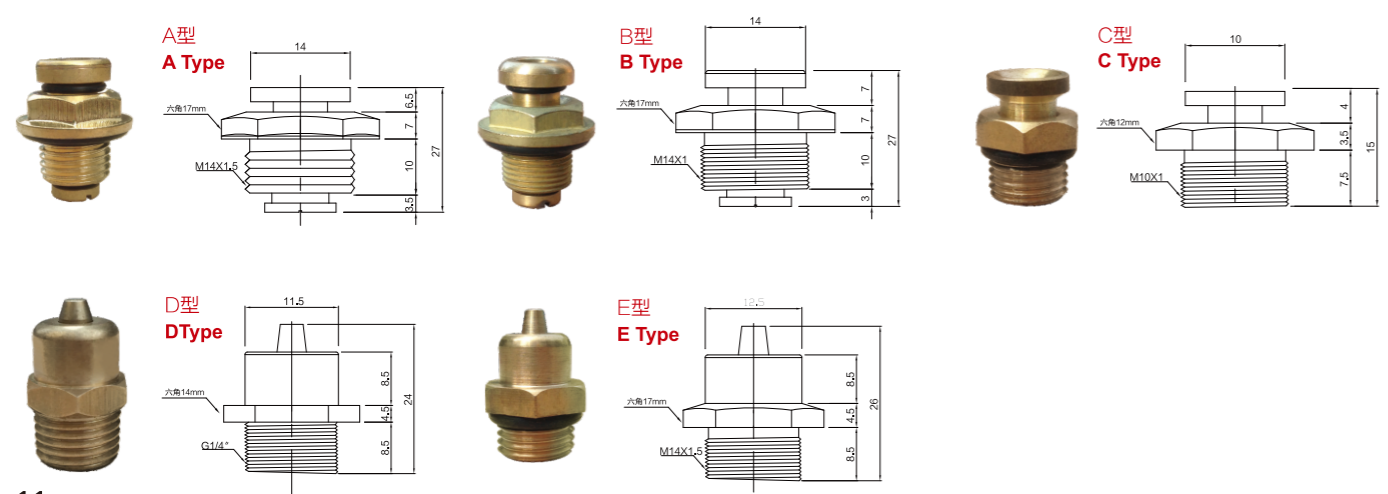


充气棒
Air stick



充气枪
Air gun

气嘴 AIR VALVE



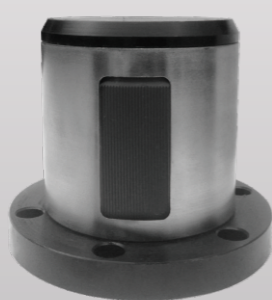
机械胀套 MECHANICAL EXPAND CHUCK

1



3 " 机械胀套
3 " MECHANICAL
EXPAND CHUCK

2



6 " 机械胀套
6 " MECHANICAL
EXPAND CHUCK

3



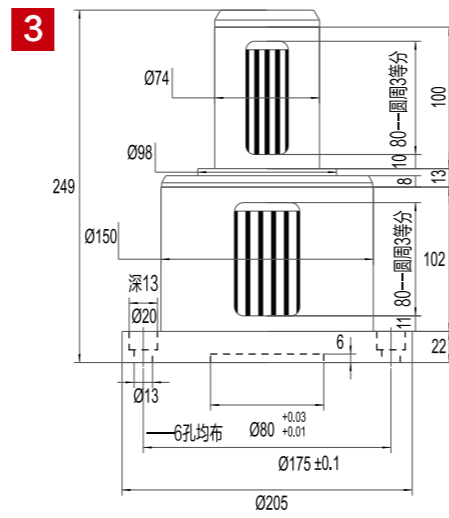
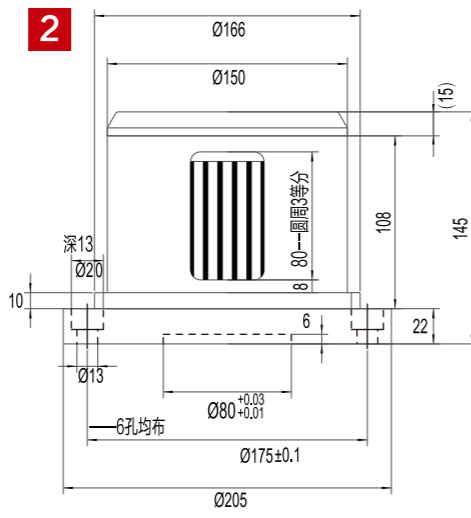
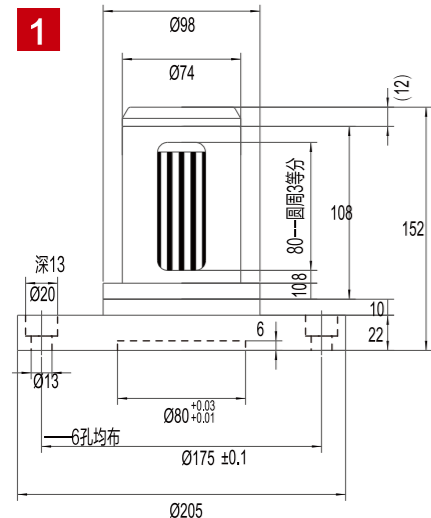
3 " / 6 " 机械胀套
3 " / 6 " MECHANICAL
EXPAND CHUCK

概述

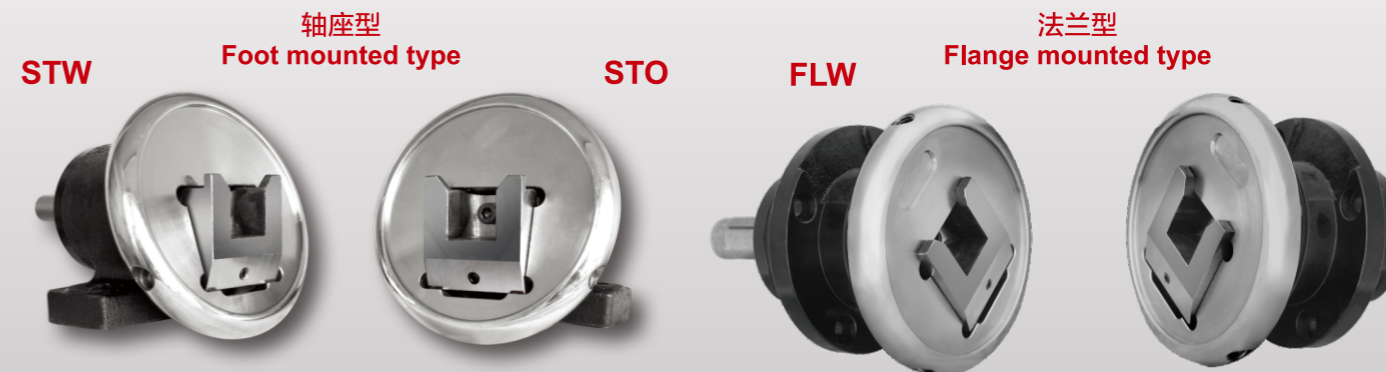
工作原理为机械动作，抓紧卷芯内径后同心度好，受力分布均匀，夹紧力大。只要旋转胀体约12度，即可夹紧或松开纸管。使用安全可靠，而且寿命特长，最适合因重量大引起气胀轴易损的机台上使用。

SUMMARY

Mechanical expand chuck can lock the roll by mechanical action, which the web will have a good concentricity, the stress is distribution with clamping force. As long as the rotation bulging body 12 degrees, tighten or loosen the web will be easy. The chuck is safe, reliable, and long life, it is more suitable for the machine which the air shaft is easy to broken caused by the weight of the web.



安全夹头 SAFETY CHUCK



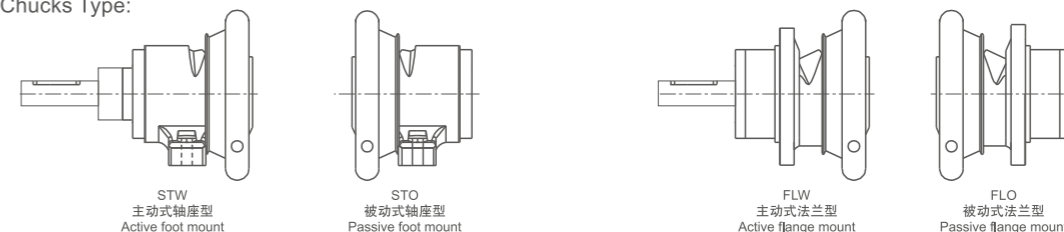
概述

安全夹头是为连续动作的卷轴(气胀轴)提供快速、准确、简易、安全又有效的连接装置、避免卷轴在运作过程中松动或旋紧，有效提高工作效率及产品品质。安全夹头按安装方式分为：轴座型与法兰型。广泛应用于：印刷、包装、塑料、造纸、玻纤、制药、电子电池、纺织等机械行业。

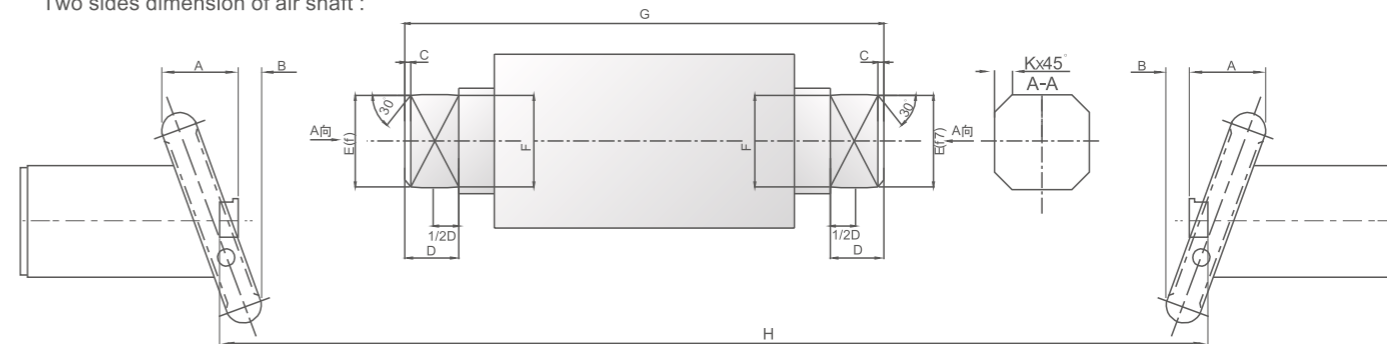
SUMMARY

Safety Chuck is for continuous action of the shaft (air shaft) to provide fast, accurate, simple, safe and effective connection device, to avoid shaft running loose or tighten, can improve work efficiency and guarantee the quality. Safety chuck could be flange-mounted or foot-mounted. It is widely used in printing, packaging, plastics, paper, glass, pharmaceutical, electronics batteries, textile machine and industrial.

安全夹头的型式: Safety Chucks Type:



气胀轴两端尺寸: Two sides dimension of air shaft:



尺寸Size	A	B	C	D	E(f)	E-F	K	最大承重量(KG) Max load	承受最大扭矩(KGFM) Max torque	重量(KG) Weight
型号Type 28	61	8	4	28	25. 30	0.15	1	800	18	18
型号Type 35	73	13	5	30	32. 38. 40	0.2	1.5	1600	35	25
型号Type 50	81	13	5	32	40. 45. 50	0.3	2	2800	110	50
型号Type 75	106	16	6	40	55. 65. 75	0.4	3	7000	235	85

弧形辊 BANANA ROLER

概述

弧形辊是一个沿纵向方向看有一定弧度并且由球轴承固定可旋转的辊。由于弧形辊具有一定的弧度，当纸张/薄膜通过弧形辊转动时，在纵向方向上纸张/薄膜将被拉长，来达到舒展幅材的作用，消除幅材进行过程中的褶皱和防止材料分切过程中可能产生的交错。用于纸张、薄膜、纺织品及类似产品加工设备。

CHARATERISTIC

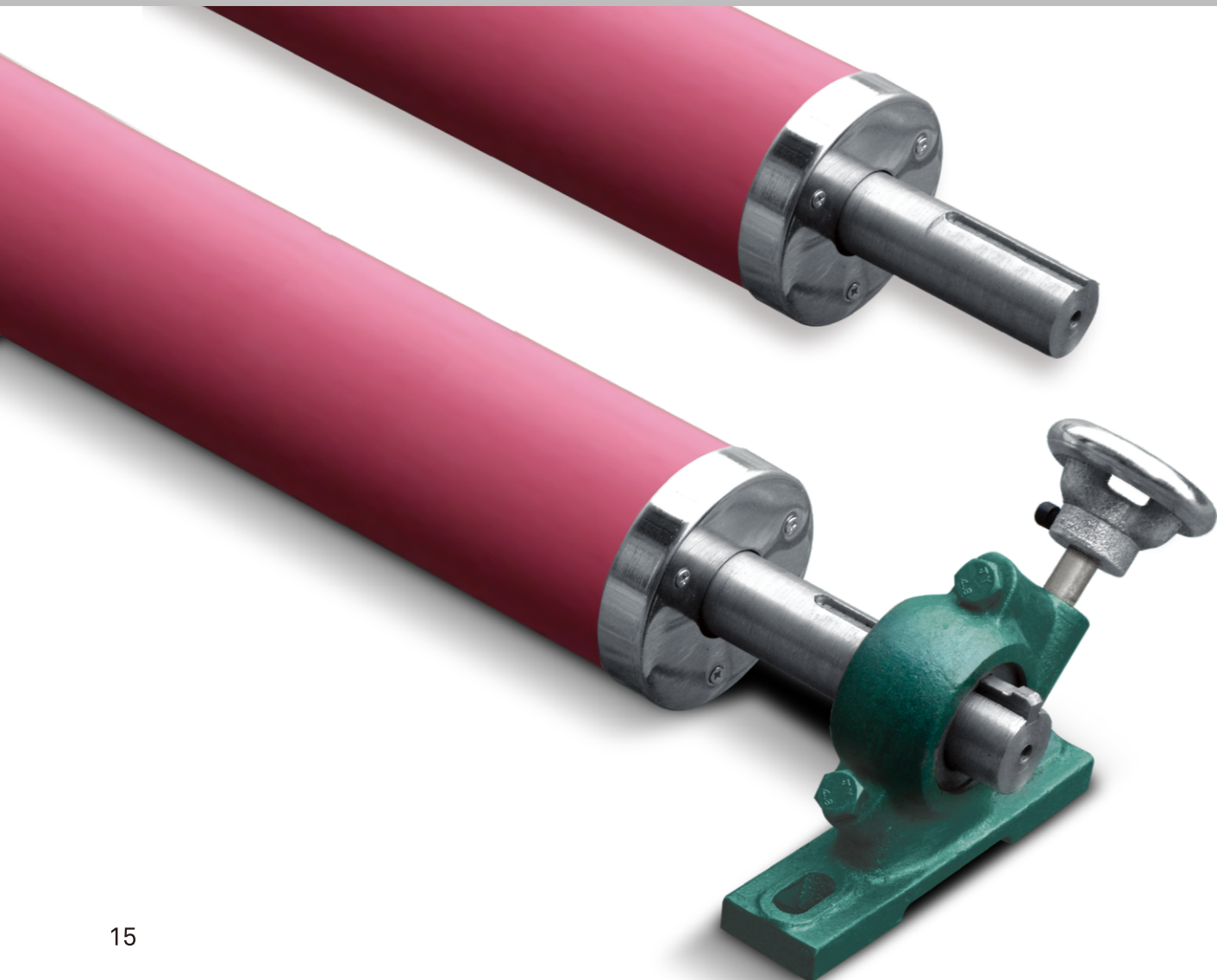
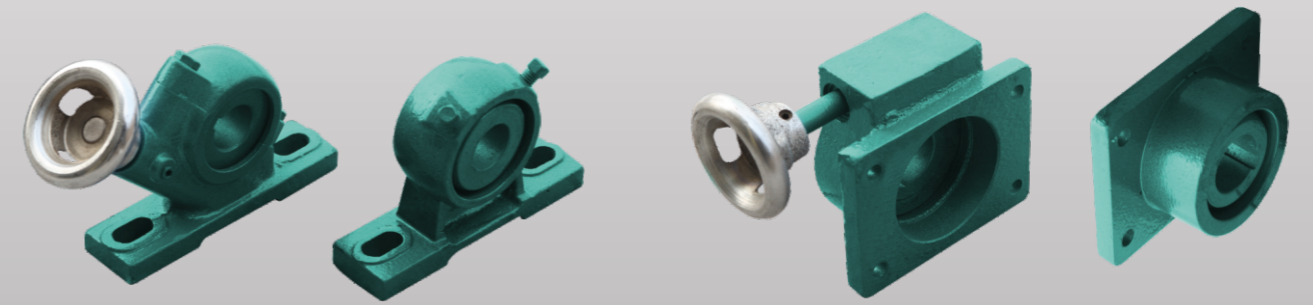
Banana roller(curved rebber roller) has a certain arc in the longitudinal direction, it is fixed by the ball bearing and rotatable. When the paper / film is rotated through the roller, it will be stretched in the longitudinal direction because of the certain curvature of the curbed rubber roller. The roller can stretch the paper / film to eliminate wrinkles and prevent the material in the cutting process. It is widely used for the paper, film, textiles and similar machine and equipment.

特点

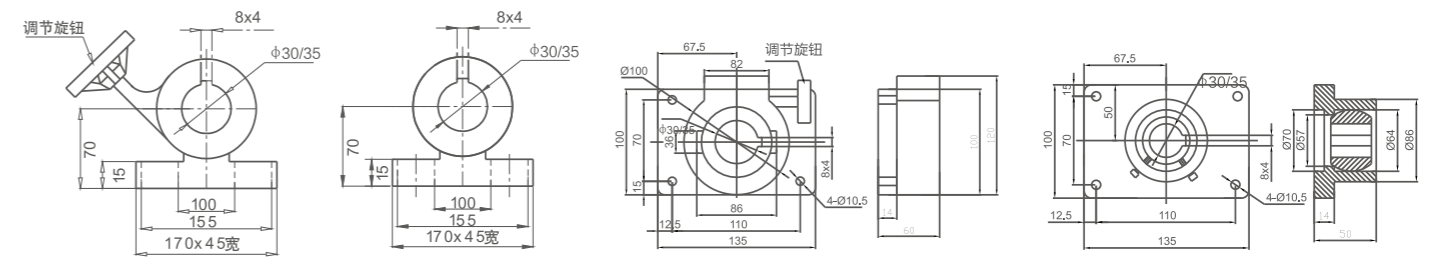
- 1、材质主要采用丁青橡胶、三元乙丙等耐磨材质。颜色可选红色、绿色、黑色等
- 2、内部结构为轴承环套
- 3、胶管内部装置轴承，回转扭矩小
- 4、橡胶表面平滑，对基材无不良影响
- 5、直径：Φ60、Φ80、Φ100、Φ125、Φ150、Φ160、Φ180、Φ200

CHARATERISTIC

1. The rubber material is normally nitrile rubber, optional for red, green and black color.
2. Bearing for internal structure.
3. Bearing installed in the rubber sleeve, resulting in small swing torque.
4. Smooth rubber surface has not any negative impact in the material.
5. Diameter include: Φ60、Φ80、Φ100、Φ125、Φ150、Φ160、Φ180、Φ200.

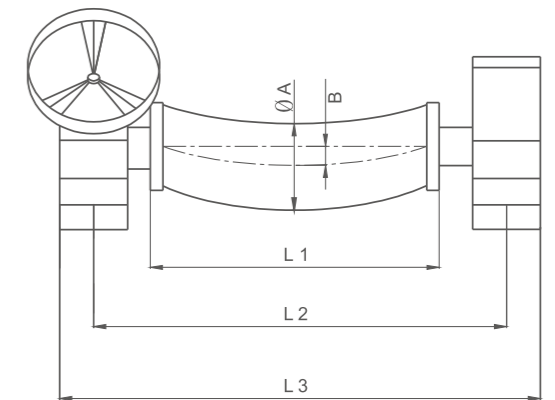


常用调节座尺寸 ADJUSTMENT SEAT SIZE



弧形辊参数 CURVED ROLLER DATE

序号 Number	L1	L2	L3	适用于基材宽度为 Applicable base material width
1	590	678	730	500mm
2	725	830	880	600mm
3	1175	1265	1315	1100mm
4	1220	1278	1330	1100mm
5	1500	1560	1610	1320mm
6	1435	1488	1540	1320mm
7	1760	1810	1870	1600mm
8	1805	1828	1880	1600mm



离心风机 CENTRIFUGAL FAN



概述

DF系列离心风机具有风量大、风压高、噪音低等优点。采用“多叶、前向、窄轮”式叶轮，具有流通面积大、加速型流道，在对流体力学加强的同时产生的涡流小等系列特点。广泛应用于：印刷、包装、塑料、造纸、玻纤、制药、制鞋等机械行业。也可用于饮食、温控、排尘、冷却、吹风和通气等各种场合。离心风机可制成左旋和右旋两种形式；从叶轮一侧正视图，叶轮顺时针旋转称为左旋转，叶轮逆时针旋转称为右旋转。

SUMMARY

DF series centrifugal fan can feature in rich wind, high pressure and low noise by the "multiple, forward, narrow" impellers. Widely used in printing, packaging, plastics, paper, glass, pharmaceuticals, footwear and other machiner and industrial. It can also be used for temperature, dust emission, cooling and so on.

离心风机数据 CENTRIFUGAL FAN DATA

型号 Model	电机型号 Motor model	功率 Power	电压 Voltage	电流 Current	频率 Frequency	转速 Rotation speed	流量 Flow	全压 Total pressure	噪音 Noise≤Db	出风口内 Air outlet (inside)	出风口外 Air outlet(outside)
DF-2	YS 5622	180 W	380V	0.50A	50Hz	2800r/min	405m³/h	450Pa	72	65×65	115×115
DF-3	YS 6322	250 W	380V	0.67A	50Hz	2800r/min	504m³/h	620Pa	75	58×75	115×115
DF-4	YS 7112	370 W	380V	0.95A	50Hz	2800r/min	660m³/h	650Pa	76	58×102	160×120
DF-5	YS 7122	550 W	380V	1.35A	50Hz	2800r/min	850m³/h	1020Pa	76	72×85	120×120
DF-6	YS 801-2	750 W	380V	1.60A	50Hz	2800r/min	1200m³/h	1210Pa	78	72×103	150×130
DF-7	YS 802-2	1.1KW	380V	2.00A	50Hz	2800r/min	1650m³/h	1260Pa	80	115×185	180×250
DF-8	YS 90S-2	1.5KW	380V	3.40A	50Hz	2800r/min	2300m³/h	1400Pa	82	125×195	190×260
DF-9	YS 90L-2	2.2KW	380V	4.70A	50Hz	2800r/min	2800m³/h	1650Pa	82	150×205	216×270
DF-10	YS100L-2	3.0KW	380V	6.40A	50Hz	2800r/min	3000m³/h	1700Pa	85	192×255	235×290
DF-11	YS110	4.0KW	380V	8.80A	50Hz	2800r/min	3980m³/h	1950Pa	90	230×270	285×325

注：特殊电压、频率均可定制。
Note: Special voltage frequency can be customized

原理

离心风机主要由叶轮、进风口、蜗壳及三相异步电机等组成。叶轮转动时，叶道（叶片构成的流道）内的空气，受离心力作用而向外运动，在叶轮中央产生真空度，因而从进风口轴向吸入空气。吸入的空气在叶轮入口处折转90°后，进入叶道，在叶片作用下获得动能和压能。从叶道甩出的气流进入蜗壳，经集中、导流后，从出风口排出。离心风机是依靠输入的机械能，提高气体压力并排送气体的机械，它是一种从动的流体机械。

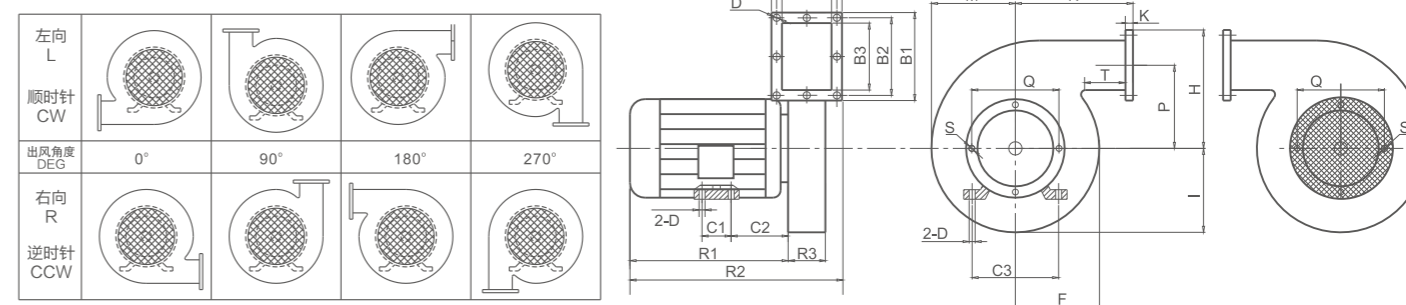
PRINCIPLE

Centrifugal fan consists of impeller, air inlet, fan shell and other components. When impeller rotates, the air will leave the channel, and will has outward movement by the centrifugal force, so the center of the impeller can generate the degree of vacuum, and intake air. Then intake air will be folded 90° at the entrance of impeller, get kinetic and pressure energy under the blades effect. Air flow from blade channel flows into spiral volute, exhausts from air outlet after concentration and diversion.

原定出风口角度为左、右(0°、90°、180°、270°)如有角度不合，可根据用户要求定制。注：图中虚线为电机在风壳后面
Designed outlet angle at left and right side (0°, 90°, 180°, 270°), customization available.

NOTE: Dashed line means that the motor is at the back of the fan.

安装简图
Installation



型号 Model	电机型号 Motor model	功率 Power	出风口法兰 Gas outlet flange							机壳外形 Shell dimension										机体安装 Machine installation						重量 Weight
			A1	A2	A3	B1	B2	B3	D	M	N	I	H	P	F	T	K	Q	S	C1	C2	C3	R1	R2	R3	
DF-2	YS5622	180 W	115	95	65	115	95	65	4-φ6.5	97	92	87	129	72	80	15	2	145	4-φ3	/	/	/	170	260	68	4.9
DF-3	YS6322	250 W	115	96	75	115	96	58	4-φ6.5	122	108	113	162	105	92	50	2	175	4-φ3	/	/	/	190	285	75	6.3
DF-4	YS7112	370 W	160	132	102	120	92	58	4-φ6.5	121	116	112	168	108	100	50	2	175	4-φ3	90	40	112	216	347	102	8.15
DF-5	YS7122	550 W	120	100	84	120	100	70	4-φ6.5	156	145	136	190	130	124	56	2	220	4-φ4	90	40	112	219	315	84	9.6
DF-6	YS801-2	750 W	150	126	103	130	106	72	4-φ6.5	156	145	136	197	132	126	57	2	220	4-φ4	90	43	112	225	350	103	11.1
DF-7	YS802-2	1.1KW	180	150	115	250	220	185	6-φ10.5	190	182	165	248	124	142	42	3	220	4-φ4	100	50	125	240	390	120	16.8
DF-8	YS90S-2	1.5KW	190	160	125	260	230	200	6-φ12.5	208	178	176	260	130	155	28	5	250	6-φ5	100	55	140	255	415	130	27.5
DF-9	YS90L-2	2.2KW	215	185	150	270	237	205	8-φ12.5	215	190	185	270	135	155	30	4	250	6-φ5	125	55	140	280	465	150	32.8
DF-10	YS100L-2	3.0KW	235	205	170	290	260	225	8-φ12.5	240	190	200	302	158	170	25	5	270	6-φ6	140	61	160	322	526	175	43
DF-11	YS110	4.0KW	285	258	230	325	298	270	8-φ12.5	334	248	275	421	258	230	55	4	400	8-φ6	140	70	190	340	598	230	70.5

力矩电机 ELECTRIC TORQUE MOTOR

力矩电机数据 ELECTRIC MOTOR DATA

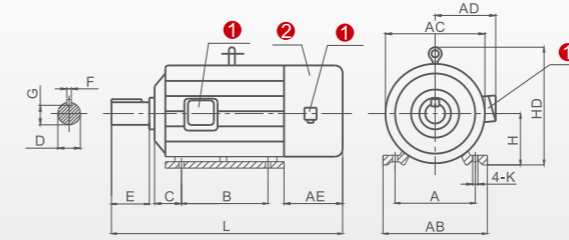
型号 Model	级数 Number of poles	堵转转矩(N.M) Rotation blocking torque	堵转电流(A) Rotation blocking current	堵转时间(S) Rotation blocking time	调速范围(R/M) Speed variable	额定频率(Hz) Rated frequency	重量(Kg) Quality
YLJ56-1-4	4	1	0.5	15	0-1450	50	10
YLJ80-2-4	4	2	1	15	0-1450	50	13
YLJ90-2-6	6	2	1.05	15	0-900	50	21
YLJ90-4-6	6	4	1.9	15	0-900	50	23
YLJ100-6-6	6	6	3	10	0-900	50	26
YLJ112-10-6	6	10	6	10	0-900	50	32
YLJ132-16-6	6	16	8	10	0-920	50	43.5
YLJ132-25-6	6	25	13	10	0-920	50	49
YLJ132-40-6	6	40	20	10	0-920	50	61
YLJ160-60-6	6	60	30	5	0-920	50	99
YLJ160-80-6	6	80	40	5	0-920	50	128
YLJ160-100-6	6	100	50	5	0-940	50	135
YLJ180-200-6	6	200	100	3	0-940	50	185

概述

力矩电机，是一种具有软机械特性和宽调速范围的特种电机，具有低转速、大扭矩、过载能力强、响应快、特性线性度好、力矩波动小等特点。力矩电动机的轴不是以恒功率输出动力而是以恒力矩输出动力。适用于卷绕，开卷、堵转和调速等场合及其他用途，被广泛应用于纺织、电线电缆、金属加工、造纸、橡胶、塑料以及印刷机械等工业领域。

SUMMARY

Electric torque motor is a kind of special motor with soft mechanical properties and wide speed range. It has the advantages of low speed, high torque, strong overload capacity, fast response, good linearity characteristics, small torque fluctuation and so on. The output of the torque motor axle is not constant power, but constant torque. This kind of motor is suitable for winding, unwinding, stall, and speed regulating, are widely used in textiles, electric wire, metal-processing, paper, rubber, plastics and printing machine and industrial.



三相异步力矩电动机(配轴流风机)安装简略图
Installation of three-phase asynchronous electric motor (with axial fan)
① 接线盒 Connection box
② 轴流风机 Axial fan

力矩电机 Electric motor

力矩电机型号 Model	安装尺寸(mm) Installation dimensions						外型尺寸(mm) Overall dimension								
	A	B	C	D	E	F	G	H	K	AB	AC	AD	AE	HD	L
YLJ56-1-4	90	70	35	11	32	5	10	56	8	110	110	55	65	145	210
YLJ80-2-4	125	100	50	20	40	6	16	80	10	160	160	120	90	165	290
YLJ90-2-6	140	125	50	24	50	8	20	92	15	175	165	145	120	180	340
YLJ90-4-6	140	125	50	24	50	8	20	92	15	175	165	145	120	180	340
YLJ100-6-6	160	140	58	28	60	8	24	100	12	195	185	150	125	230	375
YLJ112-10-6	190	140	68	28	60	8	24	112	12	235	215	165	140	260	400
YLJ132-16-6	216	140	84	38	80	10	33	132	12	270	255	190	145	305	468
YLJ132-25-6	216	140	96	38	80	10	33	132	12	270	255	190	145	305	490
YLJ132-40-6	216	178	84	38	80	10	33	132	12	270	255	190	180	305	560

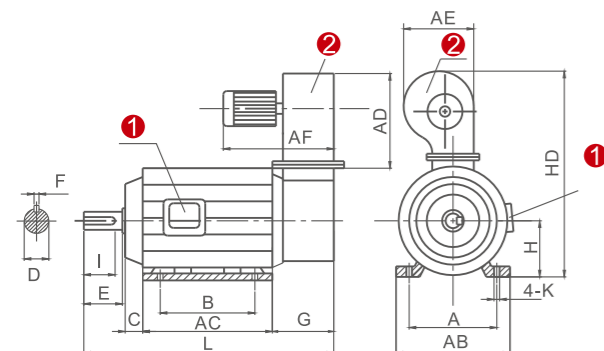


PRINCIPLE

When the load increases, the motor speed can be automatically decreased and the output torque increases to maintain the load balancing. The locked-rotor torque of this kind of motor is high and the locked-rotor current is small, so it can bear stalling. Due to the high rotor resistance, the heat generated is large, especially more serious when runs at low speed or even stall, so that the motor end cap fitted with a separate axial fan or centrifugal fan for forced air cooling (except the one output torque is small). Torque motor with SCR control device, can be voltage and speed control, speed regulating range up to 1: 4, the rate of the speed change $\leq 10\%$.

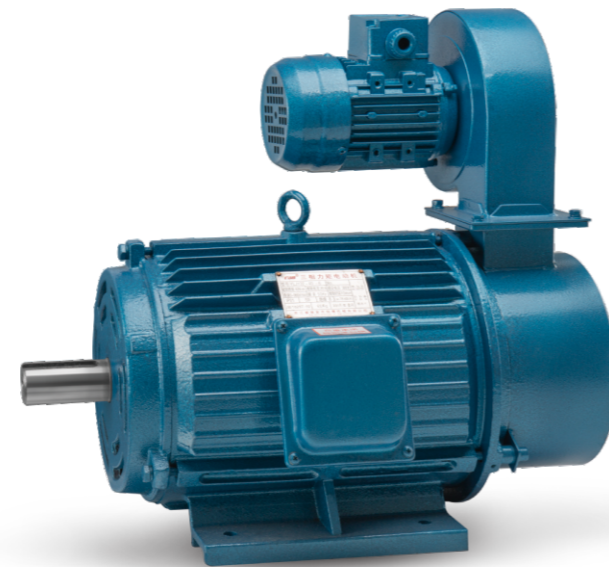
原理

当负载增加时，电动机的转速能自动的随之降低，而输出力矩增加，保持与负载平衡。力矩电机的堵转转矩高，堵转电流小，能承受一定时间的堵转运行。由于转子电阻高，损耗大，所产生的热量也大，特别在低速运行和堵转时更为严重，因此，电机在后端盖上装有独立的轴流式或离心式风机（输出力矩较小100机座号及以下除外），作强迫通风冷却，力矩电机配以可控硅控制装置，可进行调速调速，调速范围可达1: 4，转速变化率 $\leq 10\%$ 。



三相异步力矩电动机(配离心风机)安装简略图
Installation of three-phase asynchronous electric motor (with centrifugal fan)

① 接线盒 Connection box
② 离心风机 Centrifugal fan



力矩电机 Electric motor

力矩电机型号 Model	安装尺寸(mm) Installation dimensions						外型尺寸(mm) Overall dimension										
	A	B	C	D	E	F	G	H	K	AB	AC	AD	AE	AF	HD	L	
YLJ132-40-6	216	178	55	38	80	10	155	132	12	270	235	195	190	235	480	528	65
YLJ160-60-6	250	210	40	42	105	12	175	160	16	320	270	238	245	312	580	615	90
YLJ160-80-6	255	255	40	42	110	12	175	160	16	320	310	305	305	290	645	660	95
YLJ160-100-6	255	255	40	42	110	12	175	160	15	320	310	305	305	290	645	660	95
YLJ180-200-6	280	280	65	48	110	14	180	160	15	350	350	325	308	305	665	735	100

电机控制器 MOTOR CONTROLLER

适用范围

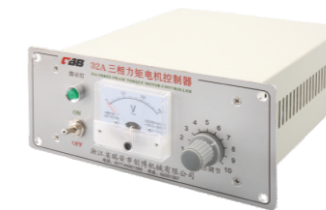
- 1、环境温度: $-25^{\circ}\text{C} \sim +55^{\circ}\text{C}$
- 2、空气相对湿度: $\leq 85\%$ ($20^{\circ}\text{C} \pm 5^{\circ}\text{C}$)
- 3、无显著冲击震动处。
- 4、工作电压: 三相电压交流380V。
- 5、频率: 50~60Hz。

APPLICATION

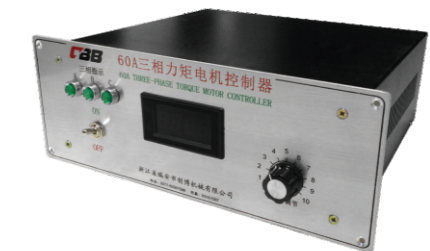
1. Environment temperature: $-25^{\circ}\text{C} \sim +55^{\circ}\text{C}$
2. Relative humidity: $\leq 85\%$ ($20^{\circ}\text{C} \pm 5^{\circ}\text{C}$)
3. Stall places without significant shock and vibration
4. Voltage: three-phase AC power 380V
5. Frequency: 50~60Hz



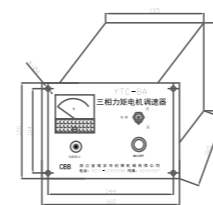
8A力矩控制器
8A Electric Motor Controller



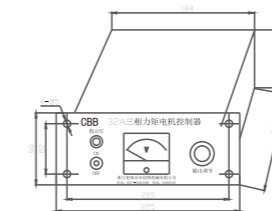
32A力矩控制器
32A Electric Motor Controller



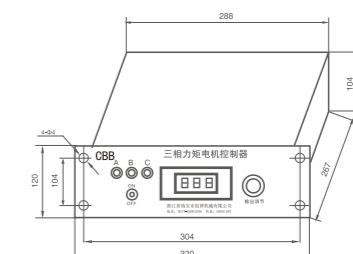
60A/100A力矩控制器
60A/100A Electric Motor Controller



8A



32A

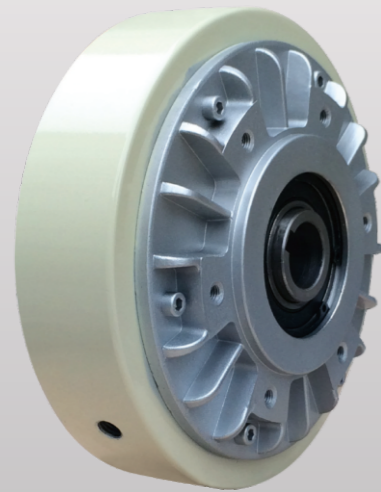


60A/100A

磁粉制动器/磁粉离合器

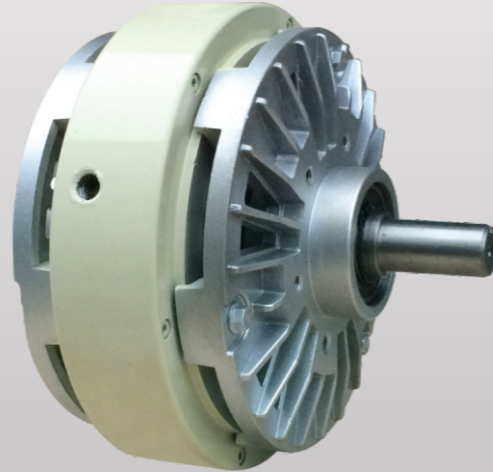
Magnetic Powder Brake /Magnetic Powder Clutch

1



孔式制动器
CELLULAR TYPE MAGNETIC POWDER BRAKE

2



单轴制动器
SINGLE-SHAFT MAGNETIC POWDER BRAKE

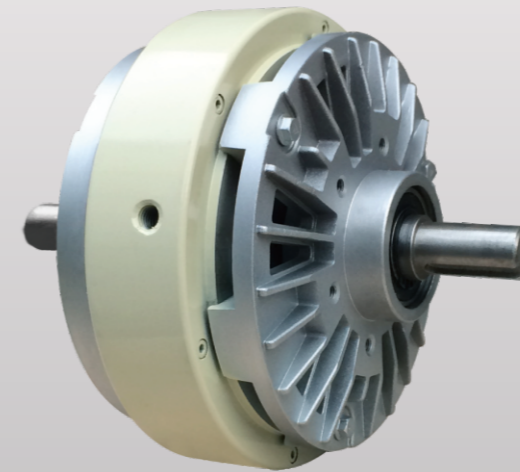
概述

磁粉制动器、离合器是根据电磁原理和利用磁粉传递转矩的，具有激磁电流和传递转矩成线性关系的特点。在同滑差无关的情况下能够传递一定的转矩，具有响应速度快、结构简单、无污染、无噪音、无冲击振动、节约能源等优点，是一种多用途、性能优越的自动控制元件。磁粉制动器经常被用于传动机械的测功加载和制动等。磁粉离合器还可用于缓冲起动、过载保护、调速等。现已广泛应用于造纸、印刷、包装、塑料、橡胶、玻纤、纺织、印染、电线电缆、冶金等以及其他有关卷取加工行业中的放卷和收卷张力控制。磁粉制动器和磁粉离合器经常配对使用。

SUMMARY

Magnetic powder brake / clutch can transmit torque based on electromagnetic theory and the use of magnetic powder. It has the characteristics which magnetizing current and transmit torque has a linear relationship. It has advantages of fast response, simple structure, no pollution, no noise, no shock and vibration, energy-saving and so on. It is a versatile, superior performance of automatic control components. Magnetic powder brake is used to drive machinery, such as loading and brake dynamometer. Magnetic powder clutch can also be used to buffer starting, overload protection, speed control and so on. It is widely used in unwinding and rewinding tension control in papermaking, printing, packaging, plastics, rubber, glass, textile, printing and dyeing, wire and cable, metallurgical and other machine and industrial.

3



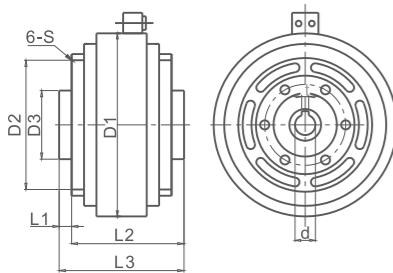
双轴离合器
DOUBLE-SHAFT MAGNETIC POWDER CLUTCH

4



孔式离合器
CELLULAR TYPE MAGNETIC POWDER CLUTCH

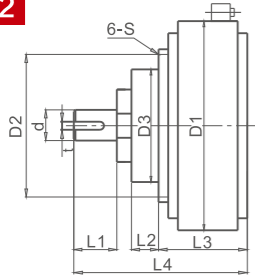
1



FZ 6 -200K 系列孔式制动器
Cellular type magnetic powder brake

主要技术参数 Main technical parameters							外形尺寸 Overall dimension							磁粉量 magnetic powder Weight (g)	
型号 Model	转矩 Torque (N.m)	电流 Current (A)	电压 Voltage (V)	转速 Speed (RPM)	重量 Weight (kg)	D1	D2	D3	L1	L2	L3	6-S	d	t	
FZ 6K	6	0.8	24	1000	3	130	62	52	3	57	60	M4	16	6	10
FZ 12K	12	1	24	1000	4.5	150	82	65	4	68	72	M5	20	6	20
FZ 25K	25	1.5	24	1000	7.5	182	110	90	4	80	84	M6	25	8	30
FZ 50K	50	1.8	24	1000	12	219	130	110	5	90	95	M8	30	8	60
FZ100K	100	2	24	800	20.5	260	140	120	5	105	110	M10	35	10	110
FZ200K	200	2.8	24	800	30	335	170	150	5	115	120	M10	45	14	180

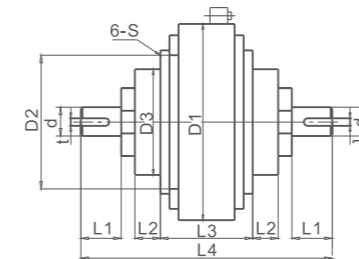
2



FZ6-400A 系列单轴制动器
Single-shaft magnetic powder brake

主要技术参数 Main technical parameters							外形尺寸 Overall dimension							磁粉量 magnetic powder Weight (g)		
型号 Model	转矩 Torque (N.m)	电流 Current (A)	电压 Voltage (V)	转速 Speed (RPM)	重量 Weight (kg)	D1	D2	D3	L1	L2	L3	L4	6-S	d	t	
FZ 6A	6	0.8	24	1400	3.5	130	62	44	25	10	68	108	M4	12	4	10
FZ 12A	12	1	24	1400	6	157	62	50	30	15	84	128	M5	16	5	20
FZ 25A	25	1.5	24	1400	8	182	78	58	40	16	93	154	M6	20	6	30
FZ 50A	50	1.8	24	1400	14	219	100	75	50	20	104	178	M6	25	8	60
FZ100A	100	2	24	1000	28	290	120	90	65	25	140	230	M8	30	8	110
FZ200A	200	2.5	24	1000	50	335	140	110	70	30	167	272	M10	35	10	180
FZ400A	400	3	24	1000	75	398	200	130	99	35	188	336	M14	45	14	300

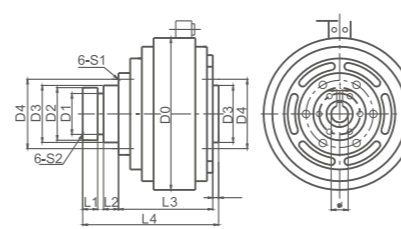
3



FL6-400A 系列双轴离合器
Double-shaft magnetic powder clutch

主要技术参数 Main technical parameters							外形尺寸 Overall dimension							磁粉量 magnetic powder Weight (g)		
型号 Model	转矩 Torque (N.m)	电流 Current (A)	电压 Voltage (V)	转速 Speed (RPM)	重量 Weight (kg)	D1	D2	D3	L1	L2	L3	L4	6-S	d	t	
FL 6A	6	0.8	24	1400	4	130	62	44	25	10	72	152	M4	12	4	10
FL 12A	12	1	24	1400	6.5	157	62	50	30	15	93	180	M5	16	5	20
FL 25A	25	1.5	24	1400	9.5	182	78	58	40	16	102	218	M6	20	6	30
FL 50A	50	1.8	24	1400	15	220	100	75	50	20	112	260	M6	25	8	60
FL100A	100	2	24	1000	30	290	120	90	65	25	160	340	M8	30	8	110
FL200A	200	2.5	24	1000	55	335	140	110	70	30	190	396	M10	35	10	180
FL400A	400	3	24	1000	80	398	200	130	99	35	221	510	M12	45	14	300

4



FL6-400K 系列孔式离合器
Cellular type magnetic powder clutch

主要技术参数 Main technical parameters							外形尺寸 Overall dimension							磁粉量 magnetic powder Weight (g)				
型号 Model	转矩 Torque (N.m)	电流 Current (A)	电压 Voltage (V)	转速 Speed (RPM)	重量 Weight (kg)	D0	D1	D2xL1	D3xL2	D4	L3	L4	L5	d	t	6-S26-S1		
FL 6K	6	0.8	24	1400	4	130	50	60x16	65x7	70	64	91	3	16	5	M4	M5	10
FL 12K	12	1	24	1400	6.5	157	60	70x18	72x8	80	77	107	3	20	6	M4	M5	20
FL 25K	25	1.5	24	1400	9.5	182	71	80x20	82x10	97	88	129	4	25	8	M5	M6	30
FL 50K	50	1.8	24	1000	15	219	85	95x22	97x11	110	105	147	4	30	8	M6	M6	60
FL100K	100	2	24	1000	32	290	105	125x24	128x14	145	134	182	5	35	10	M8	M8	110
FL200K	200	2.5	24	1000	50	335	125	140x28	145x17	165	145	200	5	45	14	M8	M10	180
FL400K	400	3	24	1000	91	398	160	180x30	190x20	210	193	251	5	60	18	M10	M12	300

自动张力控制器

AUTOMATIC TENSION CONTROLLER

概述

在很多工业生产如纸张、纺织品、塑料薄膜、电线、印刷品、磁带、金属带线材等的生产过程中，材料的收卷、放卷张力对产品的质量至关重要，为此要求进行恒张力控制，即在卷绕的过程中使产品承受最佳张力，且自始至终保持不变。若张力过大，会造成加工材料的拉伸变形；张力过小，会使卷取的材料层与层之间的应力变形，造成收卷不整齐，影响加工质量。自动张力控制器是一种实现恒张力控制的自动控制系统，其作用主要是实现辊筒间的同步，收卷和放卷的均匀控制。一套典型的张力控制系统主要由自动张力控制器，压力传感器，磁粉制动器或磁粉离合器构成。通过压力传感器测定卷材的张力，然后由磁粉控制器自动调整制动器或磁粉离合器来控制卷料张力，适用于高精度、高速度的张力控制场合，具有控制精度高、实时性能好等优点。

SUMMARY

In many industrial such as paper, textiles, plastic film, wire, printed matter, magnetic tape, metal strip wire, etc., the rewinding and unwinding tension of the material is critical to the quality of the product. Constant tension control is required for this purpose. That is, the product is subjected to optimum tension during the winding process and remains unchanged throughout. If the tension is too large, it will cause tensile deformation of the material; if the tension is too small, the stress between the layers will make the material deformed, resulting in irregular rewinding and affecting the quality. The automatic tension controller is an automatic control system that realizes constant tension control. Its function is mainly to achieve synchronization between the rollers and continuously uniform control of rewinding and unwinding. Automatic tension control system consists primarily of an automatic tension controller, pressure sensor, magnetic powder brake or clutch. The pressure sensor measures the tension of the roll and then the controller automatically adjusts the magnetic powder brake or clutch to control the tension of the roll. It is suitable for high-precision and high-speed tension control applications, and has the advantages of high control precision and good real-time performance.

适用范围

- 1、工作电压：输入AC180-245V，50/60Hz
- 2、KDT-A(B)-600 表示最大使用张力600牛顿
KDT-A(B)-1000 表示最大使用张力1000牛顿
- 3、A型为液晶显示，可进行MODBUS多机通讯（RS485）
B型为数码显示，不可进行MODBUS多机通讯
- 4、A型为旋钮调节，B型为按钮调节

APPLICATION

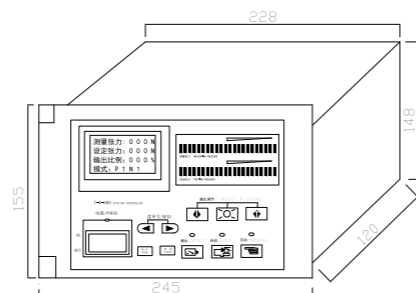
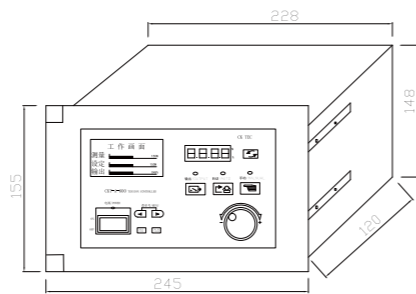
1. Voltage: input AC 180-245V, 50/60hz
2. KDT-A(B)-600 means the maximum tension of is 600N
KDT-A(B)-1000 means the maximum tension of is 1000N
3. Model A is LCD display, is available for MODBUS connection (RS485)
Model B is digital display, is unavailable for MODBUS connection (RS485)
4. Model A is adjusted by knob, Model B is adjusted by bottom



KDT-A-600 KDT-A-1000



KDT-B-600 KDT-B-1000



手动张力控制器

MANUAL TENSION CONTROLLER

概述

在工业生产的诸多行业，经常会遇到卷绕控制问题，带料或线材的开卷、放卷张力对产品的质量至关重要。手动张力控制器能够改变电压，将AC220V变为并稳定供给DC24V，通过输出电流的调节，匹配磁粉制动器或者磁粉离合器满足材料的收放卷张力需求。

放料过程：

力矩电机输出转矩，连接磁粉制动器，磁粉制动器将力矩连接放料轴，进行放料。力矩电机由力矩控制器调节转速，磁粉制动器由张力控制器调节张力，使放料均匀，速度合适。

收料过程：

力矩电机输出转矩，连接磁粉离合器，磁粉离合器将力矩连接收料轴，进行收料。力矩电机由力矩控制器调节转速，磁粉离合器由张力控制器调节张力，使收料均匀，速度合适，料筒卷紧。

SUMMARY

Application

In many industries, winding control problems are often encountered, and the tension of the material is critical to the quality of the product. Manual tension controller can change the AC220V to a stable supply of DC24V, and adjust the output current to match the magnetic powder brake or the magnetic powder clutch to meet the material's rewinding and unwinding tension demands.

Feeding process:

Torque motor output torque, connected to magnetic powder brake, then the brake connects with the feeding shaft to feed the material. Electric torque-motor controller control the torque motor, tension controller control the magnetic powder brake, resulting in uniform material feed and proper speed.

Rewinding process:

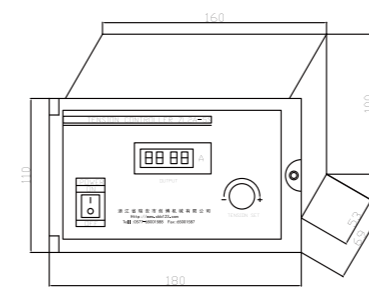
Torque motor output torque, connected to magnetic powder clutch, then the brake connects with the rewinding shaft to collect the material. Electric torque-motor controller control the torque motor, tension controller control the magnetic powder clutch, resulting in uniform material rewind, proper speed and roll tight.

适用范围

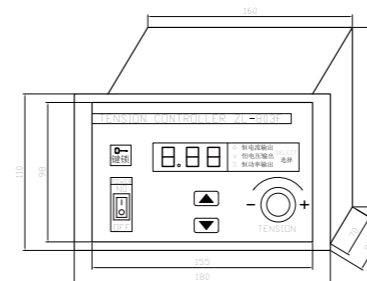
- 1、环境温度：-25℃~+55℃
- 2、空气相对湿度：≤85%（20℃±5℃）
- 3、无显著冲击震动处。
- 4、工作电压：输入AC220V，输出DC24V。

APPLICATION

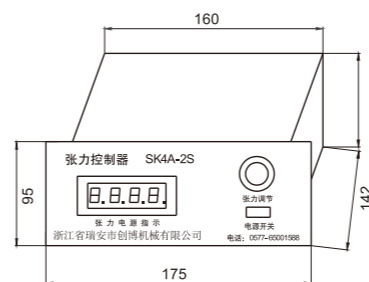
1. Environment temperature: -25℃—+55℃
2. Relative humidity: ≤85%(20℃±5℃)
3. Stall places without significant shock and vibration
4. Voltage: input AC 220v, output DC 24v.



**ZL2A-5S
ZL3A-5S**



ZL-803F



SK4A-2S

